

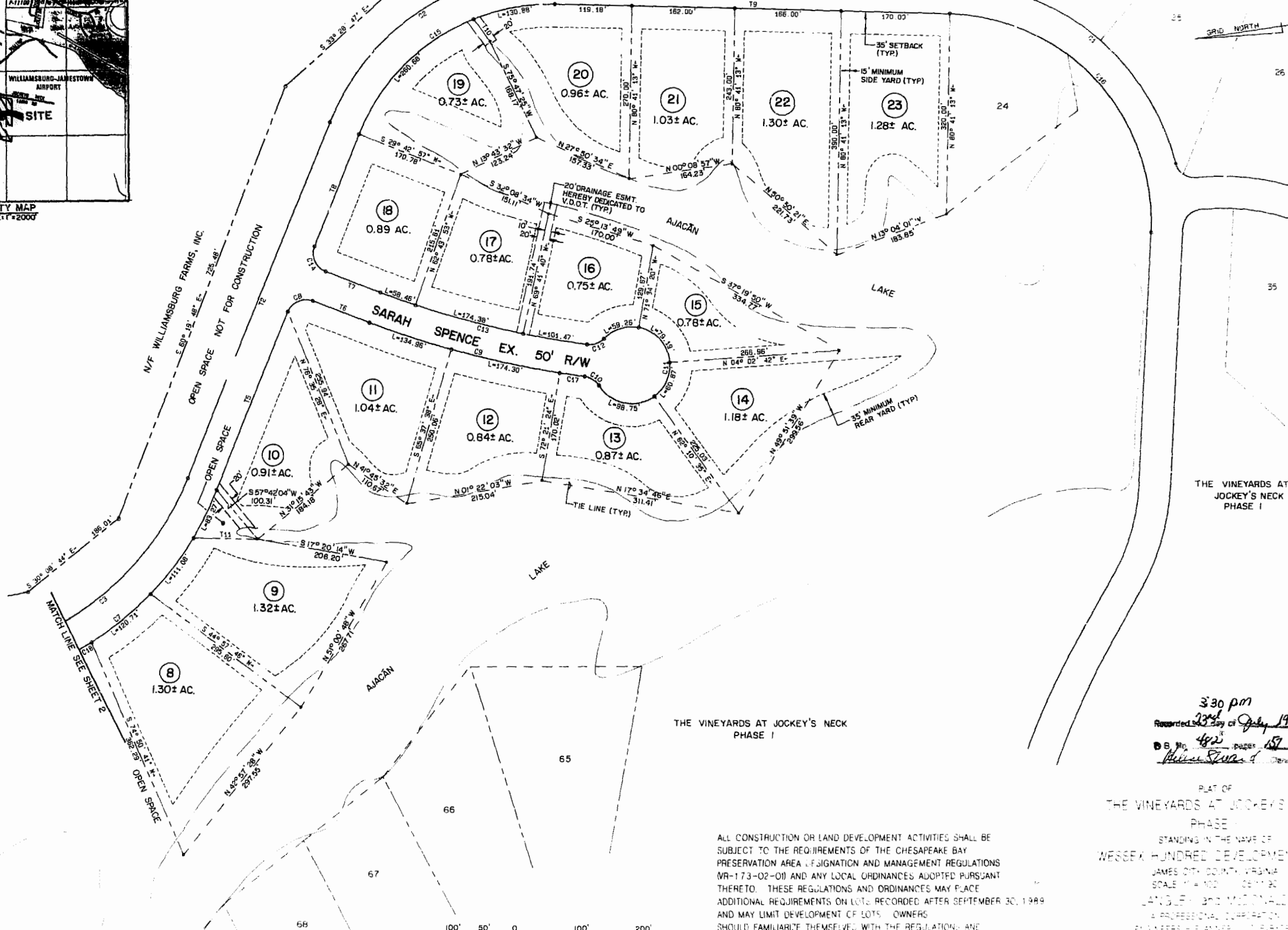
VICINITY MAP  
SCALE 1" = 2000'

N/F WILLIAMSBURG FARMS, INC.

S 08° 42' 04" W 1325.36'

OPEN SPACE NOT FOR CONSTRUCTION

JOCKEY'S NECK TRAIL EX. 50' R/W



THE VINEYARDS AT  
JOCKEY'S NECK  
PHASE I

THE VINEYARDS AT JOCKEY'S NECK  
PHASE I

3:30 pm  
Recorded 23<sup>rd</sup> day of July 1990  
D.S. No. 482 pages 157  
William Swain, Jr. Clerk

PLAT OF  
THE VINEYARDS AT JOCKEY'S NECK  
PHASE I

STANDING IN THE NAME OF  
WESSEX HUNDRED DEVELOPMENT, INC.  
JAMES CITY COUNTY, VIRGINIA  
SCALE 1" = 100' (CENTRIC)  
LANGLEY and McDONNELL  
A PROFESSIONAL CORPORATION  
ENGINEERS - PLANNERS - ARCHITECTS  
1000 GERRARD AVENUE, SUITE 100  
JAMES CITY, VIRGINIA 23162

ALL CONSTRUCTION OR LAND DEVELOPMENT ACTIVITIES SHALL BE SUBJECT TO THE REQUIREMENTS OF THE CHESAPEAKE BAY PRESERVATION AREA DESIGNATION AND MANAGEMENT REGULATIONS (MR-173-02-01) AND ANY LOCAL ORDINANCES ADOPTED PURSUANT THERETO. THESE REGULATIONS AND ORDINANCES MAY PLACE ADDITIONAL REQUIREMENTS ON LOTS RECORDED AFTER SEPTEMBER 30, 1989 AND MAY LIMIT DEVELOPMENT OF LOTS. OWNERS SHOULD FAMILIARIZE THEMSELVES WITH THE REGULATIONS AND ORDINANCES AND ARE ENCOURAGED TO CONTACT THE JAMES CITY COUNTY DIRECTOR OF CODE COMPLIANCE FOR MORE INFORMATION.

