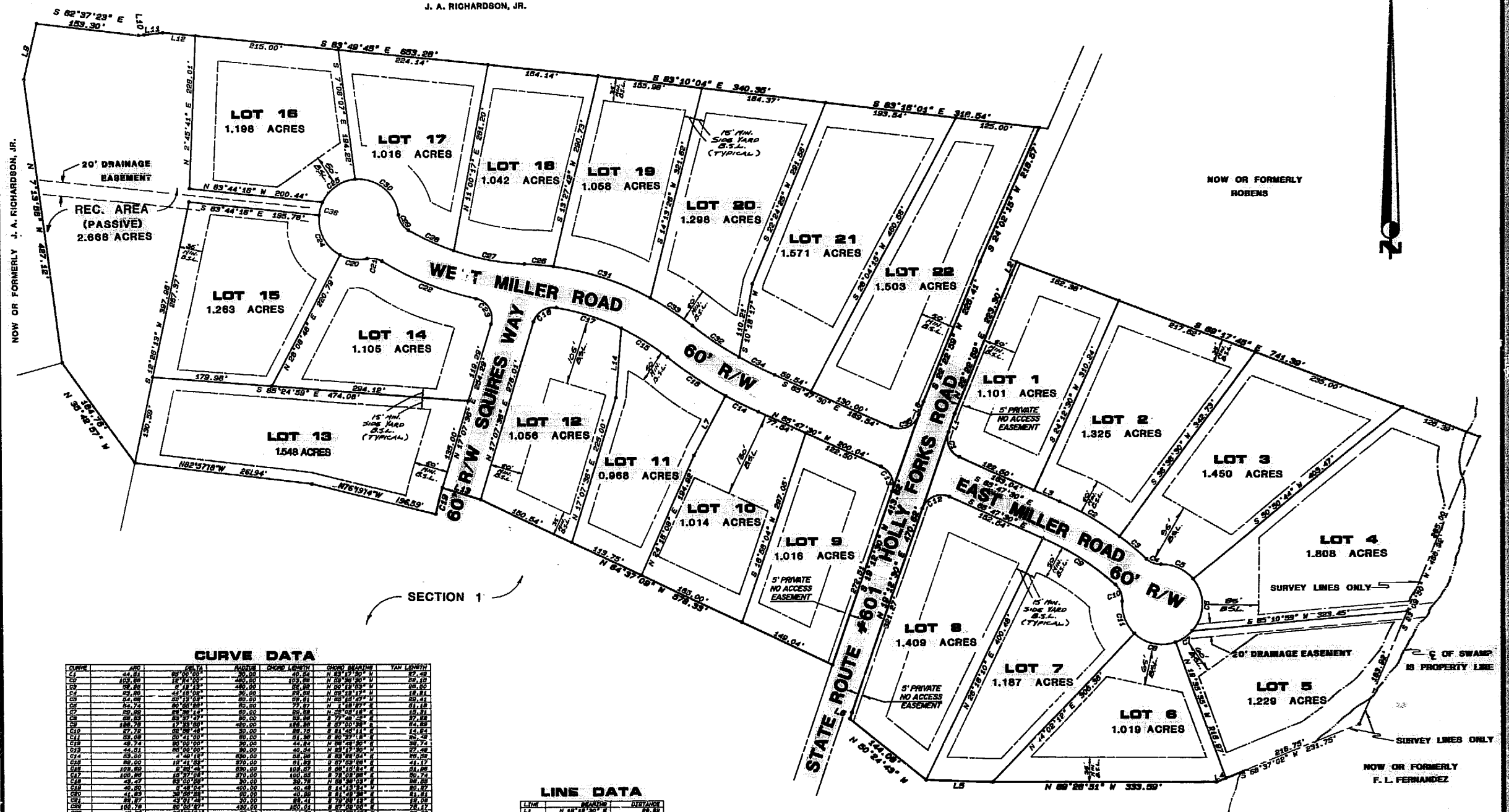


NOW OR FORMERLY
J. A. RICHARDSON, JR.

NOW OR FORMERLY
ROBENS

NOW OR FORMERLY
F. L. FERNANDEZ



CURVE DATA

CURVE	ARC	CHORD	ANGLE	CHORD BEARING	TAN LENGTH
C1	44.81	80.00	90.00	N 89°10'04" E 340.35'	87.49
C2	109.80	180.00	180.00	N 89°10'04" E 340.35'	180.00
C3	25.80	44.18	90.00	N 89°10'04" E 340.35'	18.81
C4	25.80	44.18	90.00	N 89°10'04" E 340.35'	18.81
C5	82.74	150.00	90.00	N 89°10'04" E 340.35'	51.18
C6	29.80	51.18	90.00	N 89°10'04" E 340.35'	19.81
C7	109.80	180.00	180.00	N 89°10'04" E 340.35'	180.00
C8	188.78	317.80	180.00	N 89°10'04" E 340.35'	317.80
C9	87.78	160.00	90.00	N 89°10'04" E 340.35'	14.84
C10	28.04	50.41	90.00	N 89°10'04" E 340.35'	28.04
C11	48.74	90.00	90.00	N 89°10'04" E 340.35'	39.74
C12	44.81	80.00	90.00	N 89°10'04" E 340.35'	41.48
C13	25.80	44.18	90.00	N 89°10'04" E 340.35'	18.81
C14	25.80	44.18	90.00	N 89°10'04" E 340.35'	18.81
C15	82.74	150.00	90.00	N 89°10'04" E 340.35'	51.18
C16	29.80	51.18	90.00	N 89°10'04" E 340.35'	19.81
C17	109.80	180.00	180.00	N 89°10'04" E 340.35'	180.00
C18	188.78	317.80	180.00	N 89°10'04" E 340.35'	317.80
C19	87.78	160.00	90.00	N 89°10'04" E 340.35'	14.84
C20	28.04	50.41	90.00	N 89°10'04" E 340.35'	28.04
C21	48.74	90.00	90.00	N 89°10'04" E 340.35'	39.74
C22	44.81	80.00	90.00	N 89°10'04" E 340.35'	41.48
C23	25.80	44.18	90.00	N 89°10'04" E 340.35'	18.81
C24	25.80	44.18	90.00	N 89°10'04" E 340.35'	18.81
C25	82.74	150.00	90.00	N 89°10'04" E 340.35'	51.18
C26	29.80	51.18	90.00	N 89°10'04" E 340.35'	19.81
C27	109.80	180.00	180.00	N 89°10'04" E 340.35'	180.00
C28	188.78	317.80	180.00	N 89°10'04" E 340.35'	317.80
C29	87.78	160.00	90.00	N 89°10'04" E 340.35'	14.84
C30	28.04	50.41	90.00	N 89°10'04" E 340.35'	28.04
C31	48.74	90.00	90.00	N 89°10'04" E 340.35'	39.74
C32	44.81	80.00	90.00	N 89°10'04" E 340.35'	41.48
C33	25.80	44.18	90.00	N 89°10'04" E 340.35'	18.81
C34	25.80	44.18	90.00	N 89°10'04" E 340.35'	18.81
C35	82.74	150.00	90.00	N 89°10'04" E 340.35'	51.18
C36	29.80	51.18	90.00	N 89°10'04" E 340.35'	19.81
C37	109.80	180.00	180.00	N 89°10'04" E 340.35'	180.00
C38	188.78	317.80	180.00	N 89°10'04" E 340.35'	317.80
C39	87.78	160.00	90.00	N 89°10'04" E 340.35'	14.84
C40	28.04	50.41	90.00	N 89°10'04" E 340.35'	28.04
C41	48.74	90.00	90.00	N 89°10'04" E 340.35'	39.74
C42	44.81	80.00	90.00	N 89°10'04" E 340.35'	41.48
C43	25.80	44.18	90.00	N 89°10'04" E 340.35'	18.81
C44	25.80	44.18	90.00	N 89°10'04" E 340.35'	18.81
C45	82.74	150.00	90.00	N 89°10'04" E 340.35'	51.18
C46	29.80	51.18	90.00	N 89°10'04" E 340.35'	19.81
C47	109.80	180.00	180.00	N 89°10'04" E 340.35'	180.00
C48	188.78	317.80	180.00	N 89°10'04" E 340.35'	317.80
C49	87.78	160.00	90.00	N 89°10'04" E 340.35'	14.84
C50	28.04	50.41	90.00	N 89°10'04" E 340.35'	28.04
C51	48.74	90.00	90.00	N 89°10'04" E 340.35'	39.74
C52	44.81	80.00	90.00	N 89°10'04" E 340.35'	41.48
C53	25.80	44.18	90.00	N 89°10'04" E 340.35'	18.81
C54	25.80	44.18	90.00	N 89°10'04" E 340.35'	18.81
C55	82.74	150.00	90.00	N 89°10'04" E 340.35'	51.18
C56	29.80	51.18	90.00	N 89°10'04" E 340.35'	19.81
C57	109.80	180.00	180.00	N 89°10'04" E 340.35'	180.00
C58	188.78	317.80	180.00	N 89°10'04" E 340.35'	317.80
C59	87.78	160.00	90.00	N 89°10'04" E 340.35'	14.84
C60	28.04	50.41	90.00	N 89°10'04" E 340.35'	28.04
C61	48.74	90.00	90.00	N 89°10'04" E 340.35'	39.74
C62	44.81	80.00	90.00	N 89°10'04" E 340.35'	41.48
C63	25.80	44.18	90.00	N 89°10'04" E 340.35'	18.81
C64	25.80	44.18	90.00	N 89°10'04" E 340.35'	18.81
C65	82.74	150.00	90.00	N 89°10'04" E 340.35'	51.18
C66	29.80	51.18	90.00	N 89°10'04" E 340.35'	19.81
C67	109.80	180.00	180.00	N 89°10'04" E 340.35'	180.00
C68	188.78	317.80	180.00	N 89°10'04" E 340.35'	317.80
C69	87.78	160.00	90.00	N 89°10'04" E 340.35'	14.84
C70	28.04	50.41	90.00	N 89°10'04" E 340.35'	28.04
C71	48.74	90.00	90.00	N 89°10'04" E 340.35'	39.74
C72	44.81	80.00	90.00	N 89°10'04" E 340.35'	41.48
C73	25.80	44.18	90.00	N 89°10'04" E 340.35'	18.81
C74	25.80	44.18	90.00	N 89°10'04" E 340.35'	18.81
C75	82.74	150.00	90.00	N 89°10'04" E 340.35'	51.18
C76	29.80	51.18	90.00	N 89°10'04" E 340.35'	19.81
C77	109.80	180.00	180.00	N 89°10'04" E 340.35'	180.00
C78	188.78	317.80	180.00	N 89°10'04" E 340.35'	317.80
C79	87.78	160.00	90.00	N 89°10'04" E 340.35'	14.84
C80	28.04	50.41	90.00	N 89°10'04" E 340.35'	28.04
C81	48.74	90.00	90.00	N 89°10'04" E 340.35'	39.74
C82	44.81	80.00	90.00	N 89°10'04" E 340.35'	41.48
C83	25.80	44.18	90.00	N 89°10'04" E 340.35'	18.81
C84	25.80	44.18	90.00	N 89°10'04" E 340.35'	18.81
C85	82.74	150.00	90.00	N 89°10'04" E 340.35'	51.18
C86	29.80	51.18	90.00	N 89°10'04" E 340.35'	19.81
C87	109.80	180.00	180.00	N 89°10'04" E 340.35'	180.00
C88	188.78	317.80	180.00	N 89°10'04" E 340.35'	317.80
C89	87.78	160.00	90.00	N 89°10'04" E 340.35'	14.84
C90	28.04	50.41	90.00	N 89°10'04" E 340.35'	28.04
C91	48.74	90.00	90.00	N 89°10'04" E 340.35'	39.74
C92	44.81	80.00	90.00	N 89°10'04" E 340.35'	41.48
C93	25.80	44.18	90.00	N 89°10'04" E 340.35'	18.81
C94	25.80	44.18	90.00	N 89°10'04" E 340.35'	18.81
C95	82.74	150.00	90.00	N 89°10'04" E 340.35'	51.18
C96	29.80	51.18	90.00	N 89°10'04" E 340.35'	19.81
C97	109.80	180.00	180.00	N 89°10'04" E 340.35'	180.00
C98	188.78	317.80	180.00	N 89°10'04" E 340.35'	317.80
C99	87.78	160.00	90.00	N 89°10'04" E 340.35'	14.84
C100	28.04	50.41	90.00	N 89°10'04" E 340.35'	28.04

LINE DATA

LINE	BEARING	DISTANCE
L1	N 89°10'04" E	340.35'
L2	N 89°10'04" E	340.35'
L3	N 89°10'04" E	340.35'
L4	N 89°10'04" E	340.35'
L5	N 89°10'04" E	340.35'
L6	N 89°10'04" E	340.35'
L7	N 89°10'04" E	340.35'
L8	N 89°10'04" E	340.35'
L9	N 89°10'04" E	340.35'
L10	N 89°10'04" E	340.35'
L11	N 89°10'04" E	340.35'
L12	N 89°10'04" E	340.35'
L13	N 89°10'04" E	340.35'
L14	N 89°10'04" E	340.35'



SPEARMAN & ASSOCIATES, P.C.
SURVEYING AND PLANNING
489 McLAWS CIRCLE — WILLIAMSBURG, VIRGINIA
(804) 253-8720

CHESAPEAKE BAY ACT NOTICE
ALL CONSTRUCTION OR LAND DEVELOPMENT ACTIVITIES SHALL BE SUBJECT TO THE REQUIREMENTS OF THE CHESAPEAKE BAY PRESERVATION AREA DESIGNATION AND MANAGEMENT REGULATIONS (VR-173-02-01) AND ANY LOCAL ORDINANCES ADOPTED PURSUANT THERETO. THESE REGULATIONS AND ORDINANCES MAY PLACE ADDITIONAL REQUIREMENTS ON LOTS RECORDED AFTER SEPTEMBER 30, 1989, AND MAY LIMIT DEVELOPMENT OF LOTS. OWNERS SHOULD FAMILIARIZE THEMSELVES WITH THE REGULATIONS AND ORDINANCES AND ARE ENCOURAGED TO CONTACT THE JAMES CITY COUNTY DIRECTOR OF CODE COMPLIANCE FOR MORE INFORMATION.

1228 6 p.m.
Recorded 22nd day of June 1990
B. B. No. 118, pages 602
By *Richard S. Ward* Clerk
By *Claudia H. Binkley* *Wp Clerk*

SUBDIVISION PLAT
FOR A SUBDIVISION BEING
"KING'S VILLAGE"
SECTION 2
LOCATED
JAMES CITY COUNTY, VIRGINIA
SCALE: 1" = 100' DATE: NOVEMBER 16, 1987
OWNER/DEVELOPER
WILKINSON DEVELOPMENT COMPANY