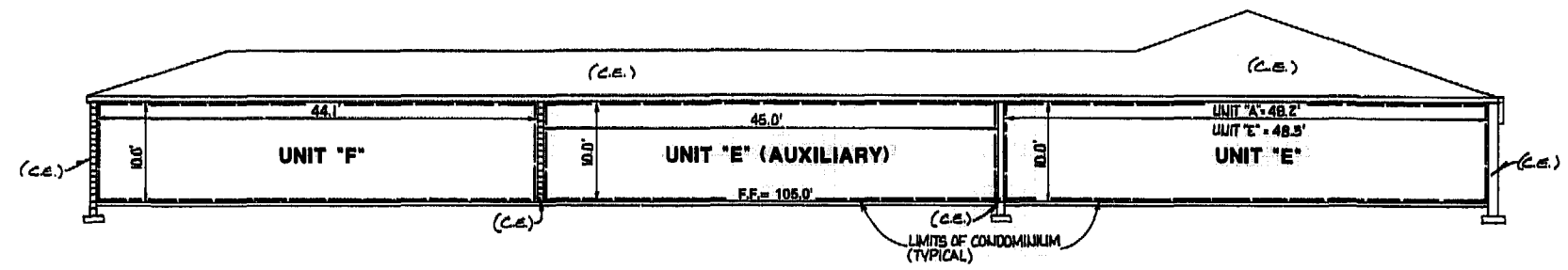


(L.C.E.) - LIMITED COMMON ELEMENT
(C.E.) - COMMON ELEMENT

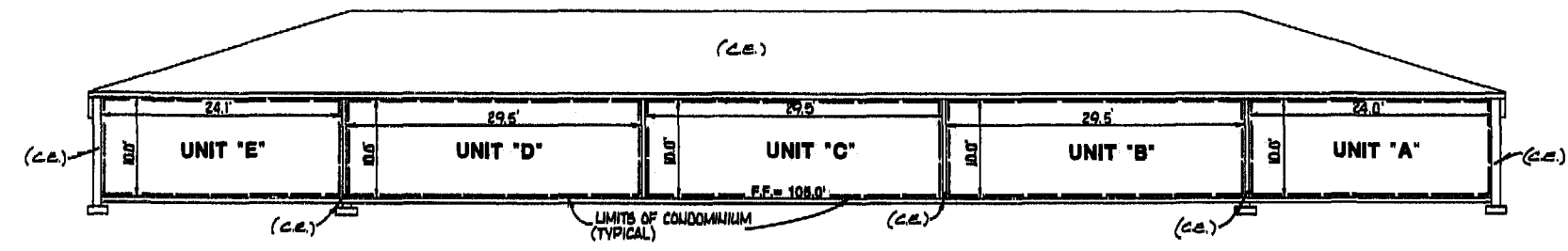
WE HEREBY CERTIFY THAT WE HAVE SURVEYED ALL OF THE UNITS OR PORTIONS THEREOF AND DO FURTHER CERTIFY THAT THESE PLANS ARE ACCURATE AND THEY COMPLY WITH SECTION 55-79.58 (B) OF THE CODE OF VIRGINIA AS AMENDED. ALL STRUCTURES ARE SUBSTANTIALLY COMPLETE.

AES, a professional corporation

BY: *Paul C. Small*
PAUL C. SMALL, P.E., C.L.S.



SECTION 3
UNITS F, E (AUXILIARY) & E
SCALE: 1" = 10'

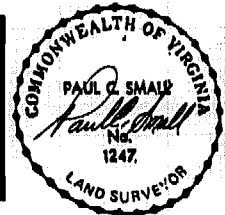


SECTION 4
UNITS E, D, C, B & A
SCALE: 1" = 10'



AES, a professional corporation
 5248 Olde Towne Road, Suite 1
 Williamsburg, Virginia 23185
 (804) 253-0040
 Engineering, Planning, Surveying

EXHIBIT "B"
PLAT OF
BOB-CAT CONDOMINIUM MANAGEMENT CENTER
 UNITS A, B, C, D, E, E (AUXILIARY) & F
 OWNER/DEVELOPER: ROBERT F. RIPLEY & CATHERINE J. RIPLEY
 BERKELEY DISTRICT JAMES CITY COUNTY VIRGINIA



No.	DATE	REVISION / COMMENT / NOTE	BY

Designed	Drawn
RWE	CMA
Scale 1" = 10'	Date 4/26/90
Project No. 6722-C	
Drawing No. 3 OF 3	

PB 52 PB 28 *Original*

