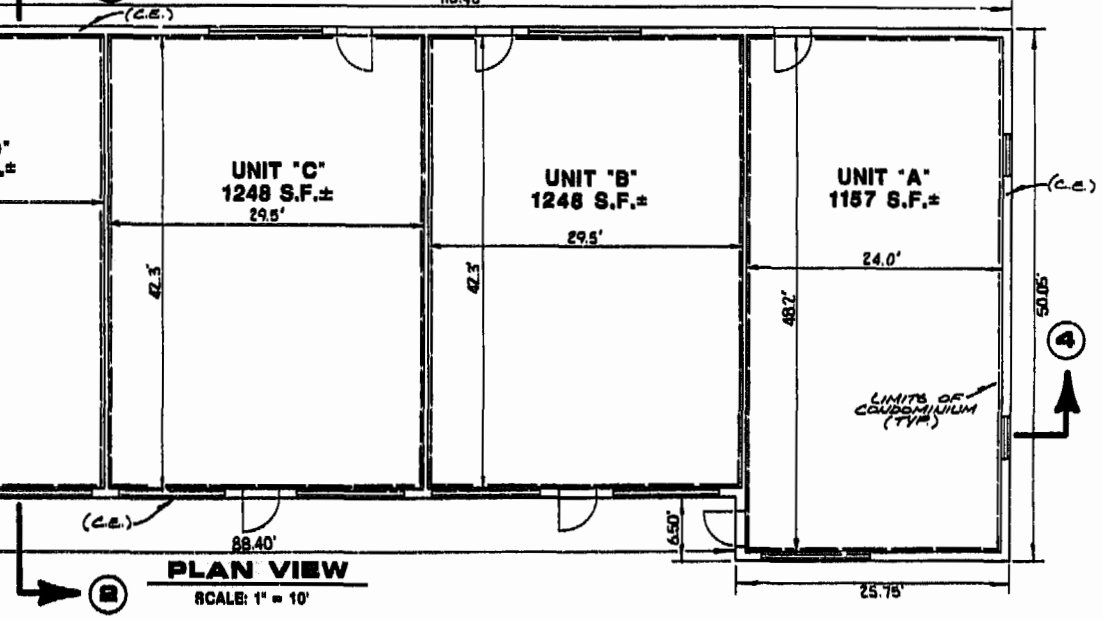
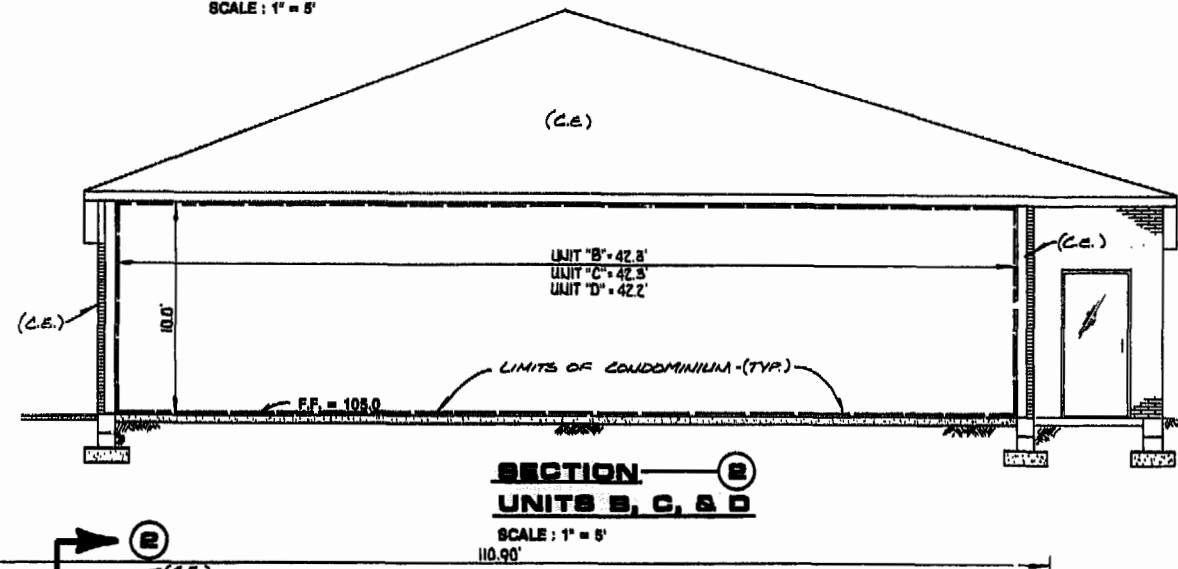
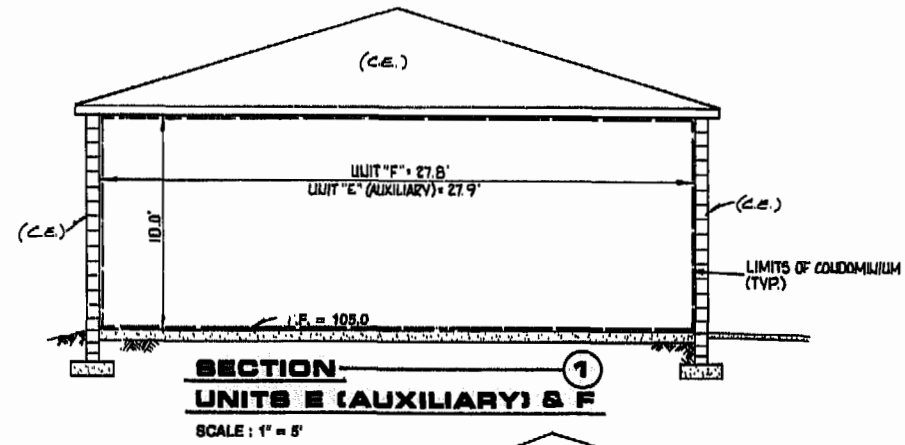
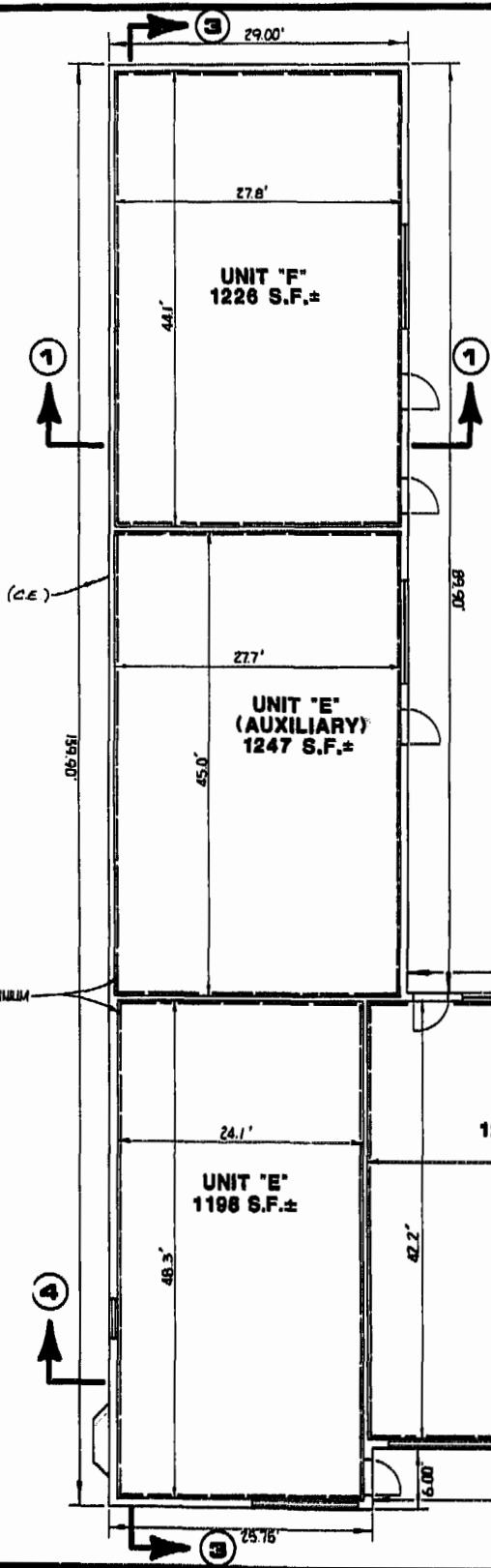


(L.C.E.) = LIMITED COMMON ELEMENT
(C.E.) = COMMON ELEMENT

WE HEREBY CERTIFY THAT WE HAVE SURVEYED ALL OF THE UNITS OR PORTIONS THEREOF AND DO FURTHER CERTIFY THAT THESE PLANS ARE ACCURATE AND THEY COMPLY WITH SECTION 55-79.58 (B) OF THE CODE OF VIRGINIA AS AMENDED. ALL STRUCTURES ARE SUBSTANTIALLY COMPLETE.

AES, a professional corporation

BY: *Paul C. Small*
PAUL C. SMALL, P.E., C.L.S.



AES, a professional corporation
5248 Olde Towne Road, Suite 1
Williamsburg, Virginia 23185
(804) 253-0040
Engineering, Planning, Surveying

EXHIBIT 'B'
PLAT OF
BOB-CAT CONDOMINIUM MANAGEMENT CENTER
UNITS A, B, C, D, E, E (AUXILIARY) & F
OWNER/DEVELOPER: ROBERT F. RIPLEY & CATHERINE J. RIPLEY
BERKELEY DISTRICT JAMES CITY COUNTY VIRGINIA



No.	DATE	REVISION / COMMENT / NOTE	BY

Designed RWE	Drawn CMA
Scale AS NOTED	Date 4/28/90
Project No. 8722-C	
Drawing No. 2 OF 3	

PB22 Pg 27

