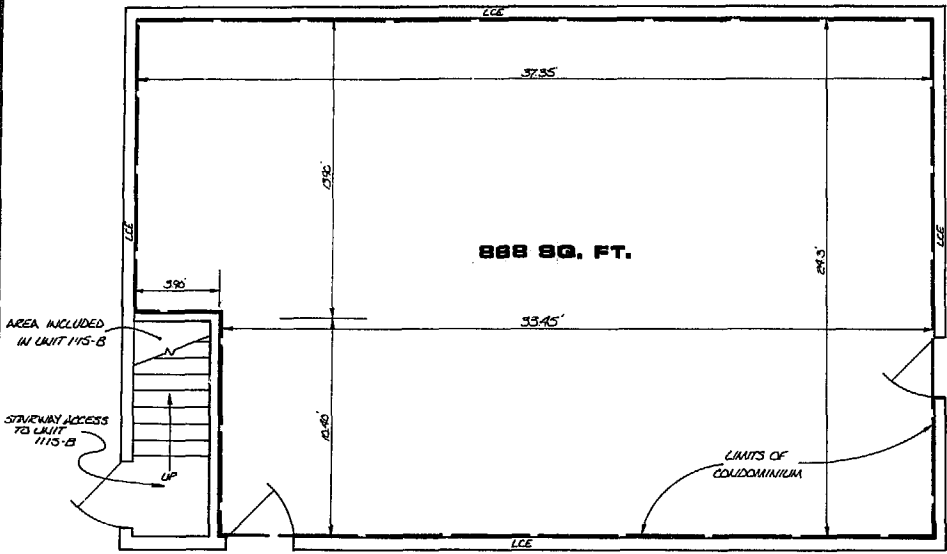


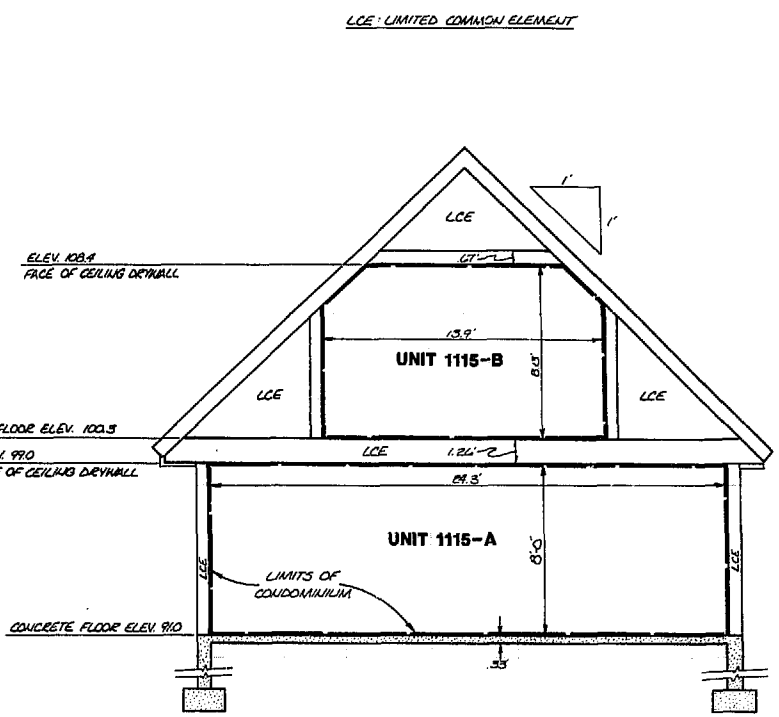
SECOND FLOOR - 1115-B

SCALE: 1/4" = 1'-0"



FIRST FLOOR - UNIT 1115-A

SCALE: 1/4" = 1'-0"



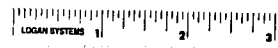
SECTION

SCALE: 1/4" = 1'-0"

WE HEREBY CERTIFY THAT WE HAVE SURVEYED ALL OF THE UNITS OR PORTIONS THEREOF AND DO FURTHER CERTIFY THAT THE PLANS ARE ACCURATE AND THEY COMPLY WITH SECTION 55-79.58 (B) OF THE CODE OF VIRGINIA AS AMENDED. ALL STRUCTURES ARE SUBSTANTIALLY COMPLETE.

AES, a professional corporation

BY: *Paul C. Small*
PAUL C. SMALL P.E., C.L.S.



AES, a professional corporation
1761 Jamestown Road, Williamsburg, Va. 23185
804-253-0040
Engineering, Planning, Surveying

**CONDOMINIUM PLAT
OLD COLONY
PROFESSIONAL CENTER
UNITS 1115 A & 1115 B
OFFICE CONDOMINIUMS**

OWNER: JON N. BOLLING, TRUSTEE UNDER TRUST AGREEMENT, DATED 12/31/1974
JAMES CITY COUNTY VIRGINIA



No.	DATE	REVISION / COMMENT / NOTE	BY

Designed	Drawn
Scale	Date
NOTED	2 / 28 / 89
Project No. 7056	
Drawing No. 4 OF 5	