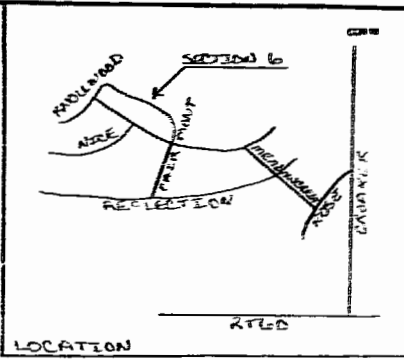




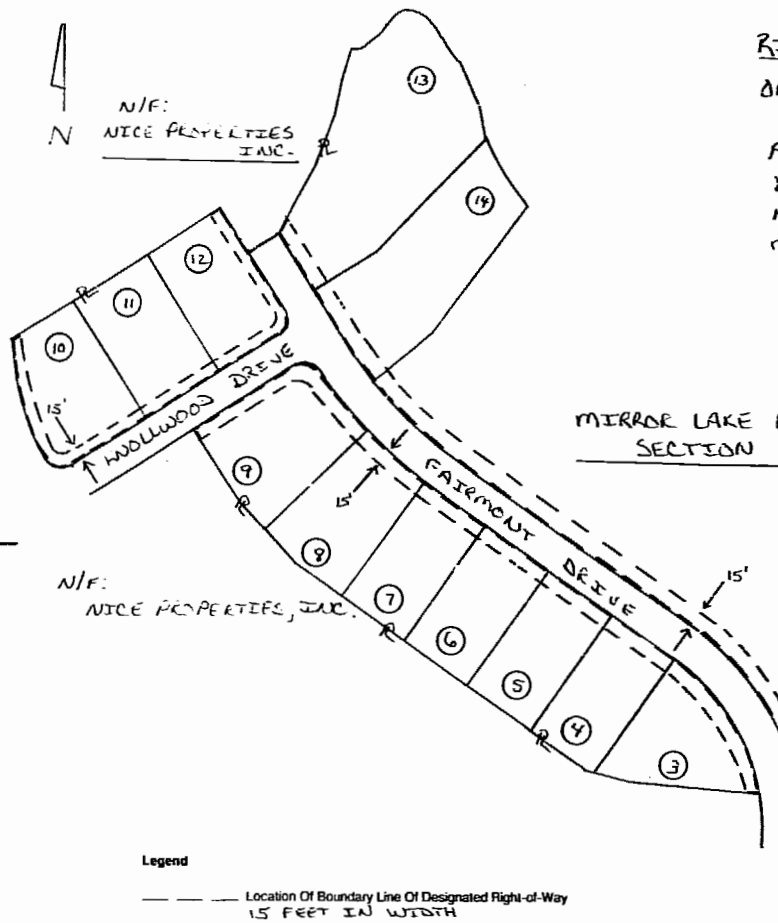
N/F:
NICE PROPERTIES
INC.

RIGHT OF WAY
ON PROPERTY OF:

PROGRESSIVE CORPORATION,
DIVERGE CORPORATION,
NICE DEVELOPMENT CORPORATION,
MARINA POINT CORPORATION,
JOINT OWNERS



LOCATION



MIRROR LAKE ESTATES
SECTION 6

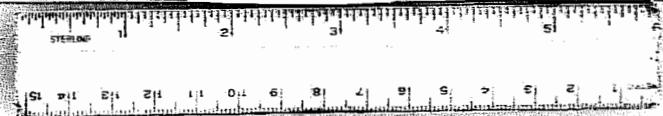
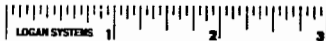
OWNERS INITIALS: JRW
J.R.N.

N/F:
NICE PROPERTIES, INC.

Legend

- Location Of Boundary Line Of Designated Right-of-Way 15 FEET IN WIDTH
- INDICATES PROPERTY LINE IS RIGHT OF WAY BOUNDARY

NO 9/556910
Rev A



Plat To Accompany
Right-Of-Way Agreement

Virginia Electric and Power Company

District		
WILLIAMSBURG - UNDERGROUND		
District-Township-Borough	County-City	State
Stonehouse James City	VA	
Office	Plat Number	
WILLIAMSBURG	28-89-0158	
Estimate Number	Grid Number	
28-906-157	M1742	
Date	9-7-87	By <u>Laura Hoffman</u>

10:14 AM
Recorded 12th day of Sept. 1989
in
Bk. No. 448 - page 1A6
file in Silver of Clerk