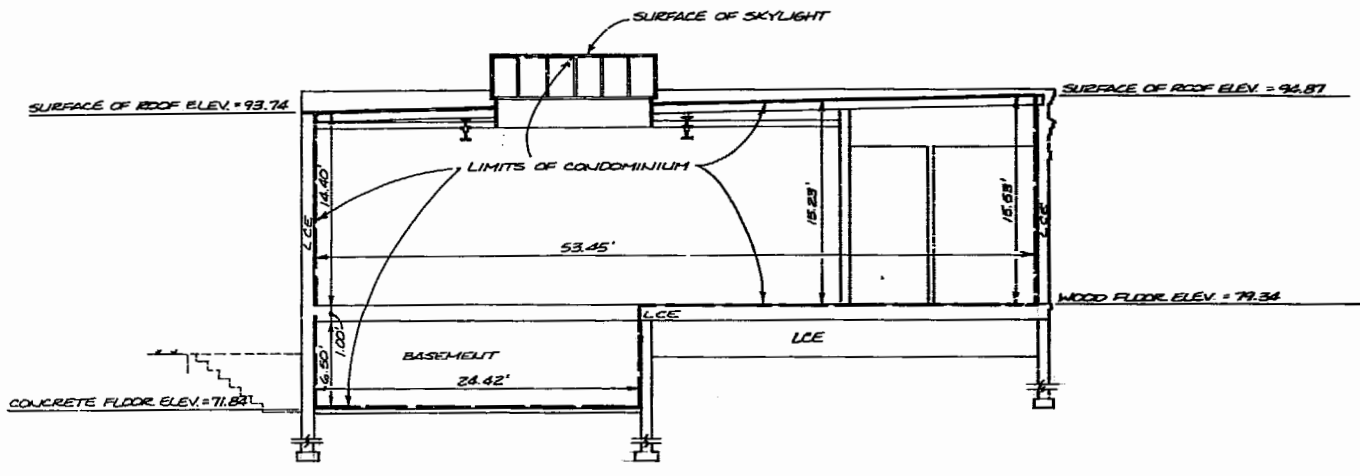


LCE = LIMITED COMMON ELEMENT

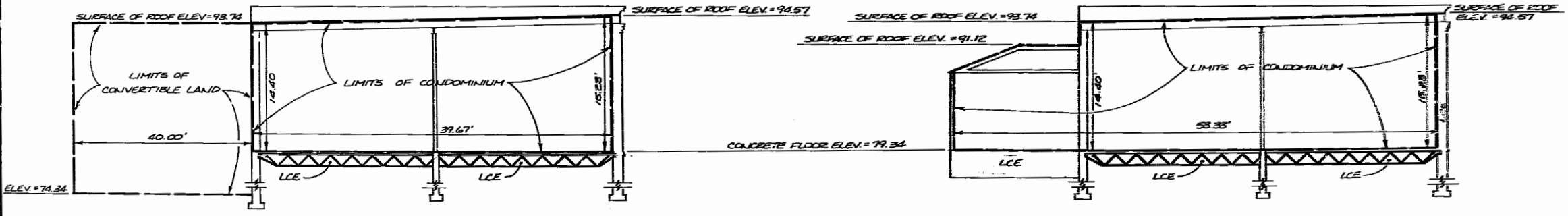
WE HEREBY CERTIFY THAT WE HAVE SURVEYED ALL OF THE UNITS OR PORTIONS THEREOF AND DO FURTHER CERTIFY THAT THESE PLANS ARE ACCURATE AND THEY COMPLY WITH SECTION 55-79.58 (B) OF THE CODE OF VIRGINIA AS AMENDED. ALL STRUCTURES ARE SUBSTANTIALLY COMPLETE.

AES, a professional corporation

BY: Paul C. Small
PAUL C. SMALL, P.E., C.L.S.



**SECTION
UNIT 2**
SCALE: 1/8" = 1'-0"



**SECTION
UNIT 3**
SCALE: 1/8" = 1'-0"

**SECTION
UNIT 1**
SCALE: 1/8" = 1'-0"



AES, a professional corporation
5248 Olde Towne Road, Suite 1
Williamsburg, Virginia 23185
(804) 253-0040
Engineering, Planning, Surveying

**CONDOMINIUM PLAT
OF
WHITEHALL
UNITS 1, 2, & 3**
OWNER/DEVELOPER: MILLER PROPERTIES
JAMES CITY COUNTY VIRGINIA



No.	DATE	REVISION / COMMENT / NOTE	BY

Designed	Drawn
Scale	Date
PROJECTED	JULY 28, 2006
Project No.	
7043	
Drawing No.	
3 of 3	

