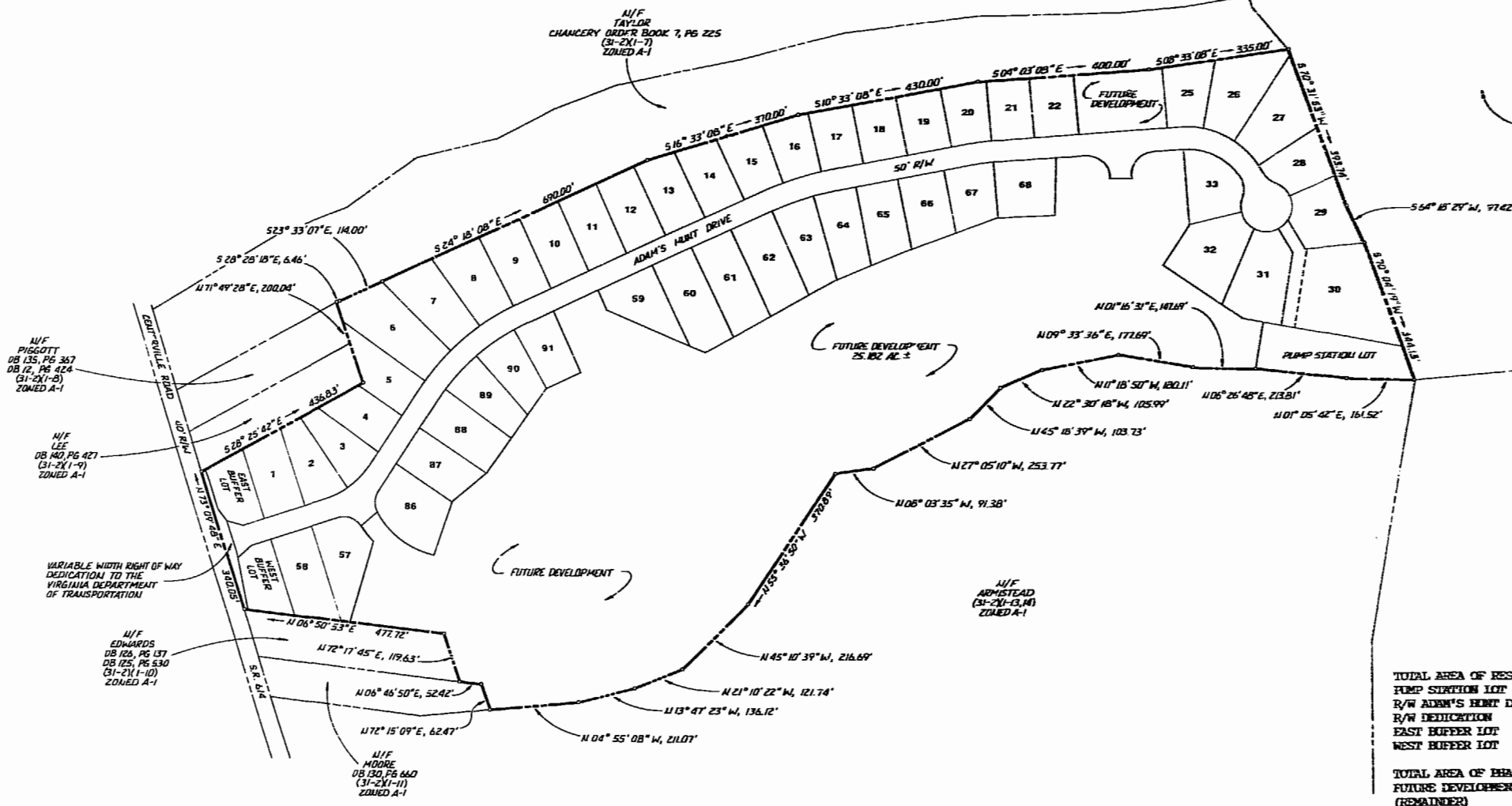




LOCATION MAP 1"=4000'



VIRGINIA INTERNATIONAL
FURNITURE AND DEVELOPMENT
WAR HILL TRACT
P. 2, PG. 30
P. 3, PG. 46
P. 4, PG. 25
32-2X1-E-7
ZONED A-1

N/F
PISSCOTT
DB 135, PG. 357
DB 12, PG. 424
(31-2X1-B)
ZONED A-1

N/F
LEE
DB 140, PG. 427
(31-2X1-Y)
ZONED A-1

VARIABLE WIDTH RIGHT OF WAY
DEDICATION TO THE
VIRGINIA DEPARTMENT
OF TRANSPORTATION

N/F
EDWARDS
DB 125, PG. 137
DB 125, PG. 530
(31-2X1-I-D)
ZONED A-1

N/F
MOORE
DB 130, PG. 660
(31-2X1-II)
ZONED A-1

N/F
TAYLOR
CHANCERY ORDER BOOK 7, PG. 225
(31-2X1-T)
ZONED A-1

N/F
ARMISTEAD
(31-2X1-3, 4)
ZONED A-1

U.G. TABULATION		
TOTAL AREA OF RES. LOTS	943,945 SF	21.6700 AC
PUMP SECTION LOT	35,052 SF	0.8045 AC
R/W ADAM'S HUNT DRIVE	156,278 SF	3.5676 AC
R/W DEDICATION	5,917 SF	0.1358 AC
EAST BUFFER LOT	14,831 SF	0.3405 AC
WEST BUFFER LOT	15,701 SF	0.3605 AC
TOTAL AREA OF PHASE I	1,171,734 SF	26.8293 AC
FUTURE DEVELOPMENT (REMAINDER)	1,096,918 SF	25.1818 AC
TOTAL AREA SUBDIVIDED	2,268,652 SF	52.0811 AC
LARGEST RES. LOT (#30)	47,949 SF	1.1006 AC
SMALLEST RES. LOT (#20)	15,000 SF	0.3444 AC
NUMBER OF LOTS (RES.)	49	
AVERAGE LOT SIZE	19,264 SF	0.4422 AC
LOT YIELD/GROSS ACRE	1.82 LOTS/GROSS ACRE	

Recorded 9:15 AM
20th day of August, 1997

P. B. No. 446 in pages 54
Helen Sluiter Clerk

INDEX OF SHEETS

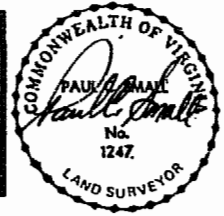
COVER SHEET
LOTS 1-14, 57-61, & 86-91
LOTS 15-22, 25-33, & 62-68

1 of 3
2 of 3
3 of 3



AES, a professional corporation
5248 Old Towne Road, Suite 1
Williamsburg, Virginia 23185
(804) 253-0040
Engineering, Planning, Surveying

PLAT OF
ADAM'S HUNT
PHASE I
OWNER/DEVELOPER: ADAM'S HUNT INVESTMENT CORPORATION
POWhatan DISTRICT JAMES CITY COUNTY VIRGINIA



No.	DATE	REVISION / COMMENT / NOTE	BY

Designed SOW/WWP	Drawn BAJ
Date 1-2007	Date OCT. 1998
Project No. 7044	
Drawing No. 1 of 3	

