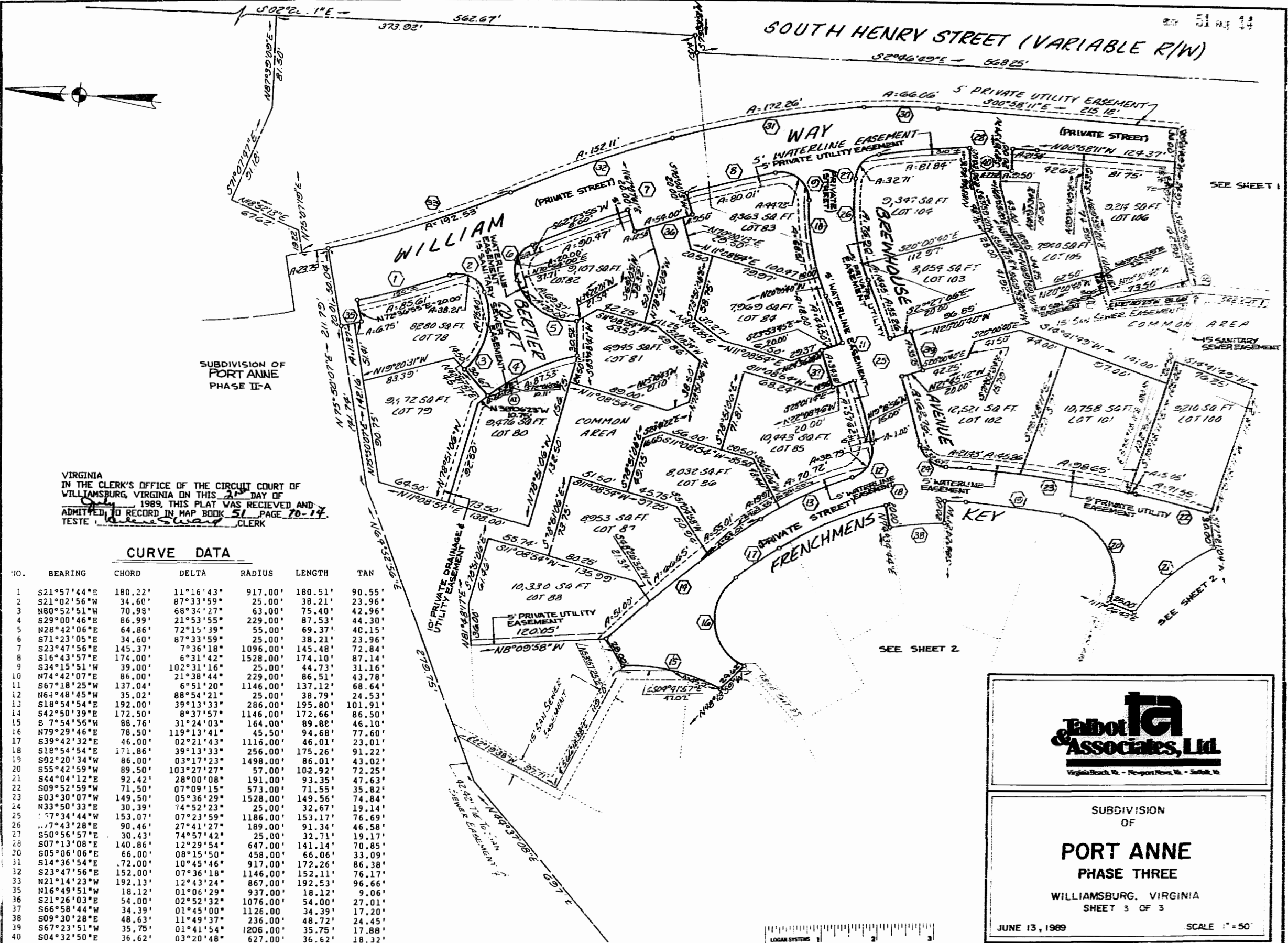


SOUTH HENRY STREET (VARIABLE R/W)



SUBDIVISION OF PORT ANNE PHASE II-A

VIRGINIA IN THE CLERK'S OFFICE OF THE CIRCUIT COURT OF WILLIAMSBURG, VIRGINIA ON THIS 13<sup>TH</sup> DAY OF JUNE 1989, THIS PLAT WAS RECEIVED AND ADMITTED TO RECORD IN MAP BOOK 51 PAGE 70-14. TESTE: *[Signature]* CLERK

CURVE DATA

NO.	BEARING	CHORD	DELTA	RADIUS	LENGTH	TAN
1	S21°57'44"E	180.22'	11°16'43"	917.00'	180.51'	90.55'
2	S21°02'56"W	34.60'	87°33'59"	25.00'	38.21'	23.96'
3	N80°52'51"W	70.98'	68°34'27"	63.00'	75.40'	42.96'
4	S29°00'46"E	86.99'	21°53'55"	229.00'	87.53'	44.30'
5	N28°42'06"E	64.86'	72°15'39"	55.00'	69.37'	40.15'
6	S71°23'05"E	34.60'	87°33'59"	25.00'	38.21'	23.96'
7	S23°47'56"E	145.37'	7°36'18"	1096.00'	145.48'	72.84'
8	S16°43'57"E	174.00'	6°31'42"	1528.00'	174.10'	87.14'
9	S34°15'51"W	39.00'	102°31'16"	25.00'	44.73'	31.16'
10	N74°42'07"E	86.00'	21°38'44"	229.00'	86.51'	43.78'
11	S67°18'25"W	137.04'	6°51'20"	1146.00'	137.12'	68.64'
12	N64°48'45"W	35.02'	88°54'21"	25.00'	38.79'	24.53'
13	S18°54'54"E	192.00'	39°13'33"	286.00'	195.80'	101.91'
14	S42°50'39"E	172.50'	8°37'57"	1146.00'	172.66'	86.50'
15	S 7°54'56"W	88.76'	31°24'03"	164.00'	89.88'	46.10'
16	N79°29'46"E	78.50'	119°13'41"	45.50'	94.68'	77.60'
17	S39°42'32"E	46.00'	02°21'43"	1116.00'	46.01'	23.01'
18	S18°54'54"E	171.86'	39°13'33"	256.00'	175.26'	91.22'
19	S02°20'34"W	86.00'	03°17'23"	1498.00'	86.01'	43.02'
20	S55°42'59"W	89.50'	103°27'27"	57.00'	102.92'	72.25'
21	S44°04'12"E	92.42'	28°00'08"	191.00'	93.35'	47.63'
22	S09°52'59"W	71.50'	07°09'15"	573.00'	71.55'	35.82'
23	S03°30'07"W	149.50'	05°36'29"	1528.00'	149.56'	74.84'
24	N33°50'33"E	30.39'	74°52'23"	25.00'	32.67'	19.14'
25	S 7°34'44"W	153.07'	07°23'59"	1186.00'	153.17'	76.69'
26	S 7°43'28"E	90.46'	27°41'27"	189.00'	91.34'	46.58'
27	S50°56'57"E	30.43'	74°57'42"	25.00'	32.71'	19.17'
28	S07°13'08"E	140.86'	12°29'54"	647.00'	141.14'	70.85'
29	S05°06'06"E	66.00'	08°15'50"	458.00'	66.06'	33.09'
30	S14°36'54"E	172.00'	10°45'46"	917.00'	172.26'	86.38'
31	S23°47'56"E	152.00'	07°36'18"	1146.00'	152.11'	76.17'
32	N21°14'23"W	192.13'	12°43'24"	867.00'	192.53'	96.66'
33	N16°49'51"W	18.12'	01°06'29"	937.00'	18.12'	9.06'
34	S21°26'03"E	54.00'	02°52'32"	1076.00'	54.00'	27.01'
35	S66°58'44"W	34.39'	01°45'00"	1126.00'	34.39'	17.20'
36	S09°30'28"E	48.63'	11°49'37"	236.00'	48.72'	24.45'
37	S67°23'51"W	35.75'	01°41'54"	1206.00'	35.75'	17.88'
38	S04°32'50"E	36.62'	03°20'48"	627.00'	36.62'	18.32'

**Robert A. & Associates, Ltd.**  
Virginia Beach, Va. • Newport News, Va. • Suffolk, Va.

---

SUBDIVISION OF  
**PORT ANNE**  
PHASE THREE  
WILLIAMSBURG, VIRGINIA  
SHEET 3 OF 3

JUNE 13, 1989 SCALE 1" = 50'

