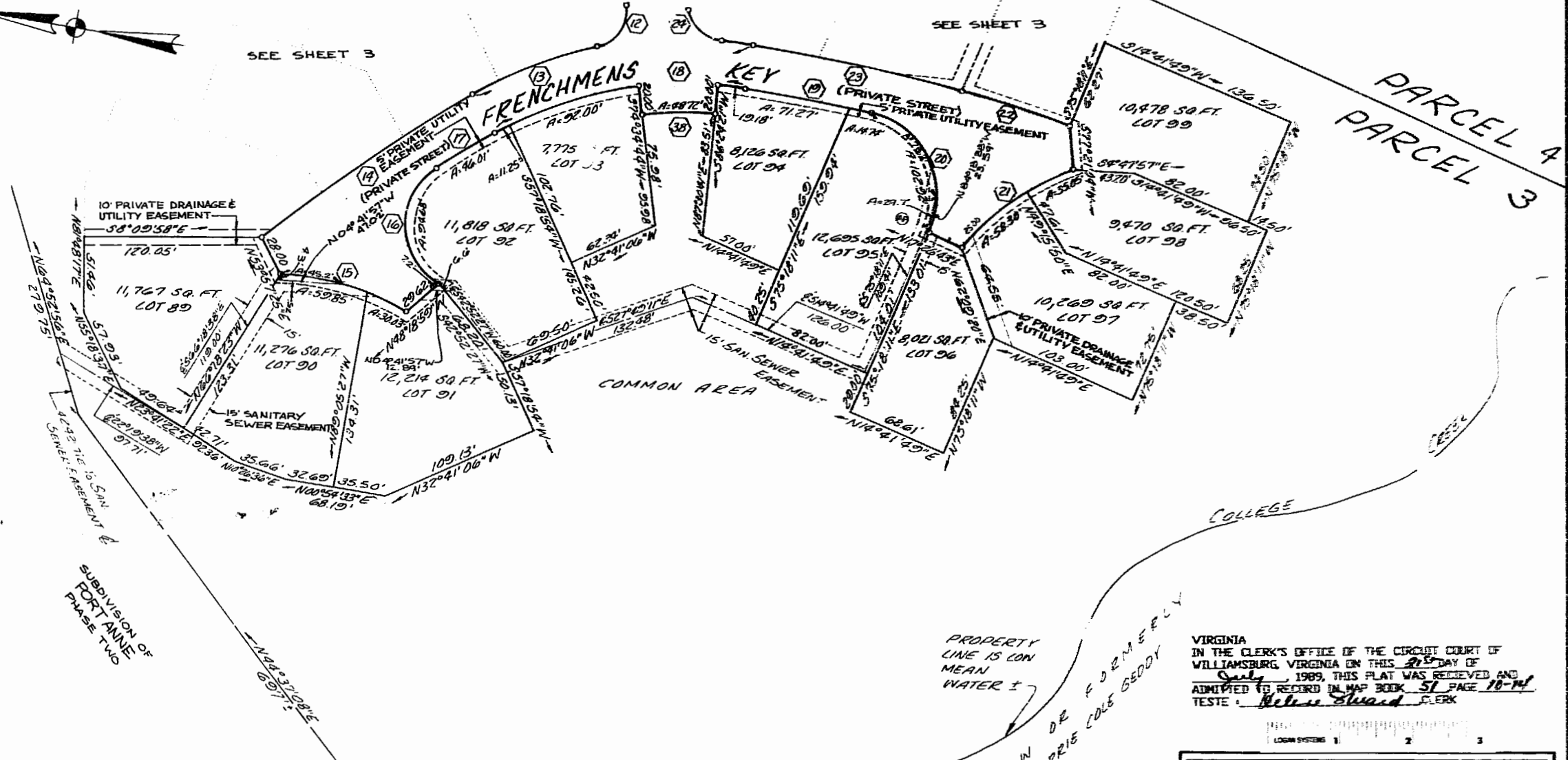


SEE SHEET 1

SEE SHEET 3

SEE SHEET 3



CURVE DATA

NO.	BEARING	CHORD	DELTA	RADIUS	LENGTH	TAN
12	N64°48'45"W	35.02'	88°54'21"	25.00'	38.79'	24.53'
13	S18°54'54"E	192.00'	39°13'33"	286.00'	195.80'	101.91'
14	S42°50'39"E	172.50'	8°37'57"	1146.00'	172.66'	86.50'
15	S 7°54'56"W	88.76'	31°24'03"	164.00'	89.88'	46.10'
16	N79°29'46"E	78.50'	119°13'41"	45.50'	94.68'	77.60'
17	S39°42'32"E	46.00'	02°21'43"	1116.00'	46.01'	23.01'
18	S18°54'54"E	171.86'	39°13'33"	256.00'	175.26'	91.22'
19	S02°20'34"W	86.00'	03°17'23"	1498.00'	86.01'	43.02'
20	S55°42'59"W	89.50'	103°27'27"	57.00'	102.92'	72.25'
21	S44°04'12"E	92.42'	28°00'08"	191.00'	93.35'	47.63'
22	S09°52'59"W	71.50'	07°09'15"	573.00'	71.55'	35.82'
23	S03°30'07"W	149.50'	05°36'29"	1528.00'	149.56'	74.84'
24	N33°50'33"E	30.39'	74°52'23"	25.00'	32.67'	19.14'
38	S09°30'28"E	48.63'	11°49'37"	236.00'	48.72'	24.45'

VIRGINIA
 IN THE CLERK'S OFFICE OF THE CIRCUIT COURT OF
 WILLIAMSBURG, VIRGINIA ON THIS 29th DAY OF
July, 1989, THIS PLAT WAS RECEIVED AND
 ADMITTED TO RECORD IN MAP BOOK 51 PAGE 18-14
 TESTE: Robert Swad CLERK

LOGAN SYSTEMS 1 2 3

Talbot & Associates, Ltd.
 Virginia Beach, Va. • Newport News, Va. • Suffolk, Va.

SUBDIVISION
 OF
PORT ANNE
 PHASE THREE
 WILLIAMSBURG, VIRGINIA
 SHEET 2 OF 3
 JUNE 13, 1989 SCALE 1" = 50'

