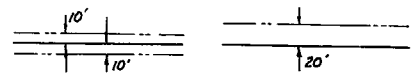


WALSINGHAM ACADEMY, INC.

* PART OF LOTS 24 AND 25 SUBJECT TO OPTION HELD BY CITY OF WILLIAMSBURG FOR PUBLIC STREET EXTENSION.

DENOTES MINIMUM BUILDING SETBACK LINE

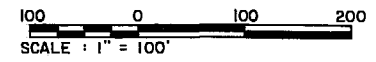
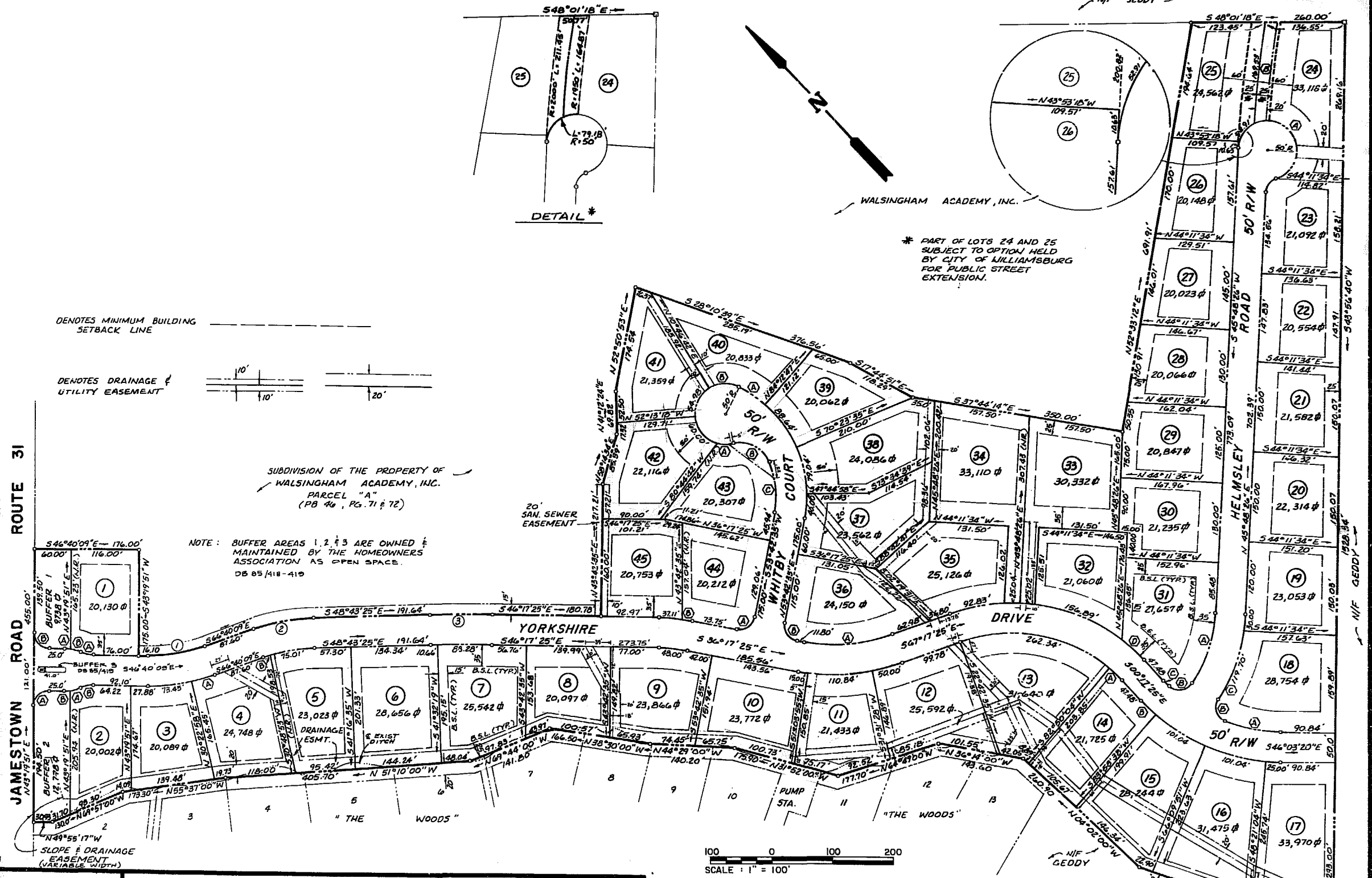
DENOTES DRAINAGE & UTILITY EASEMENT



SUBDIVISION OF THE PROPERTY OF WALSINGHAM ACADEMY, INC. PARCEL "A" (PB 46, PG. 71 & 72)

NOTE: BUFFER AREAS 1, 2 & 3 ARE OWNED & MAINTAINED BY THE HOMEOWNERS ASSOCIATION AS OPEN SPACE. DB 85/418-419

JAMESTOWN ROAD ROUTE 31



1870400



THE DEYOUNG-JOHNSON GROUP, INC. ENGINEERS · ARCHITECTS · SURVEYORS P.O. BOX 197 WILLIAMSBURG, VIRGINIA 23187 (804) 253-0673

2 of 2

AMENDED PLAT YORKSHIRE of WILLIAMSBURG

CITY OF WILLIAMSBURG, VIRGINIA

DATE OCT. 26, 1987	DESIGNED DPC	DRAWN TCS	CHECKED LDE
--------------------	--------------	-----------	-------------

10:12 AM
Recorded 2nd day of May, 1989
in
B. B. No. 88, pages 24
W. H. S. Clerk

