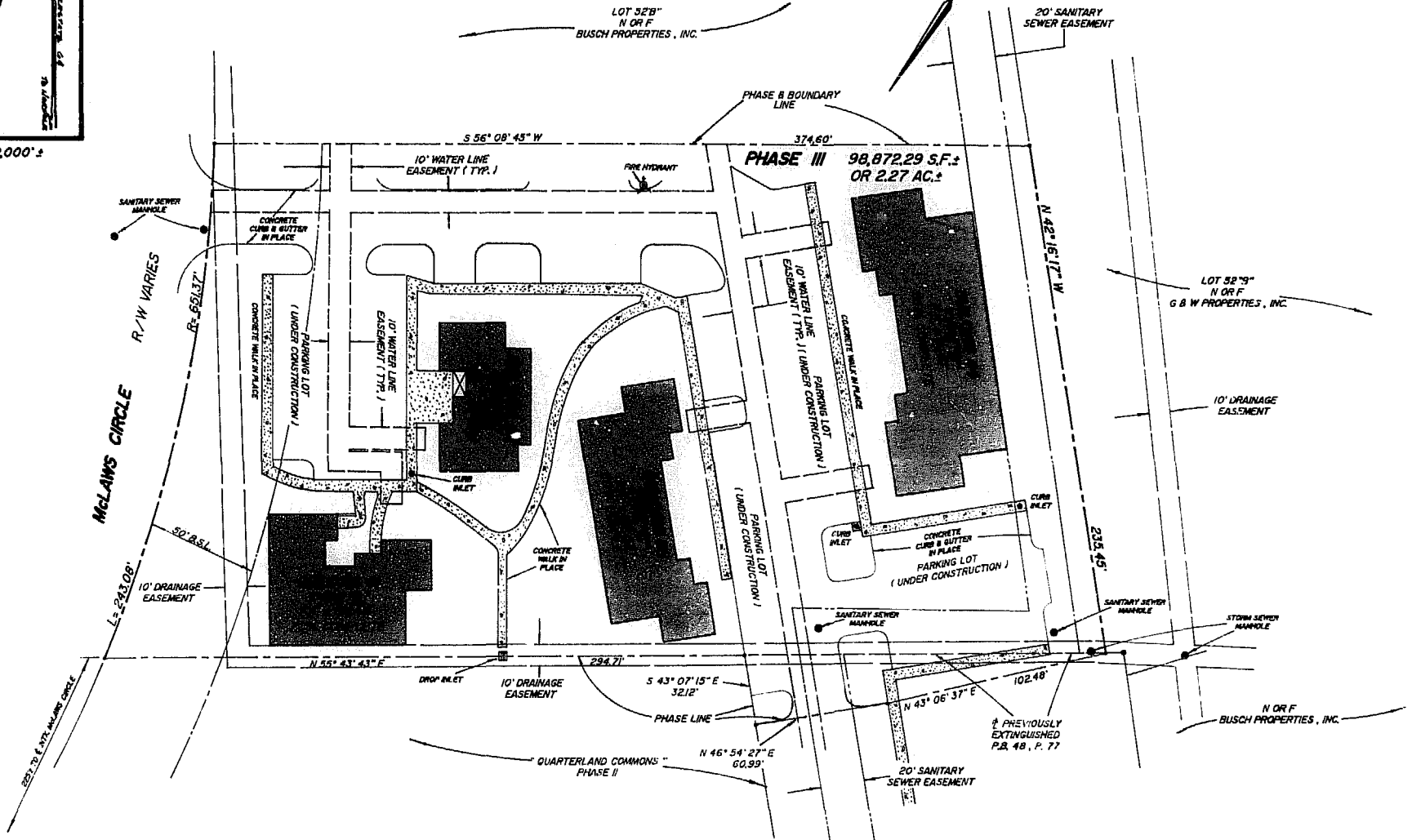


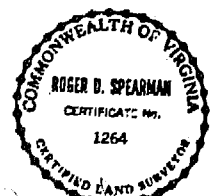
VICINITY MAP SCALE: 1" = 2000'

NOTE:
ALL BUILDINGS SHOWN HEREON ARE 1 STORY
BRICK AND FRAME.



I HEREBY CERTIFY THAT THIS PLAT IS ACCURATE AND THAT IT COMPLIES WITH THE CODE OF VIRGINIA OF 1950 AS AMENDED, 55-79, 58, AND I FURTHER CERTIFY THAT ALL UNITS OR PORTIONS THEREOF DEPICTED HEREON, PURSUANT TO THE CODE OF VIRGINIA 55-79, 58 (a), HAVE BEEN SUBSTANTIALLY COMPLETED OR ARE PRESENTLY IN STATUS SHOWN ON EACH BUILDING.

SIGNED: *Roger D. Spearman*



SPEARMAN & ASSOC., INC. - LAND SURVEYING
 #488 McLaws Circle - Busch Corporate Center
 Williamsburg, Virginia - 23186
 (804)263-8720 - Peninsula 886-9571



12:49 p.m.
 Received 1989 April 1989
 431
 750
 Clerk

EXHIBIT A1
"QUARTERLAND COMMONS" - PHASE III
 OFFICE CONDOMINIUMS
 LOCATED
 BUSCH CORPORATE CENTER
 JAMES CITY COUNTY, VIRGINIA
 DATE: APRIL 11, 1989 SCALE: 1" = 40'
 PREPARED FOR
JIM GRIFFITH BUILDER
 F.B. "F" J.O. #4626