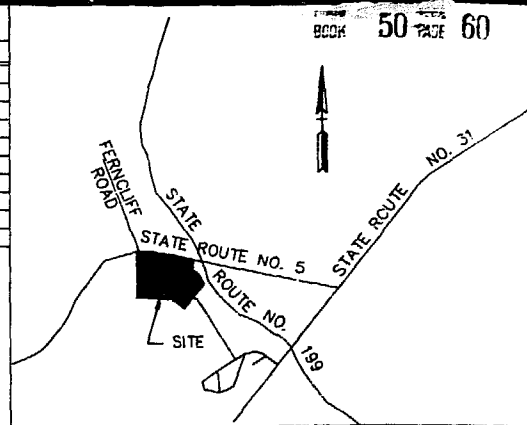


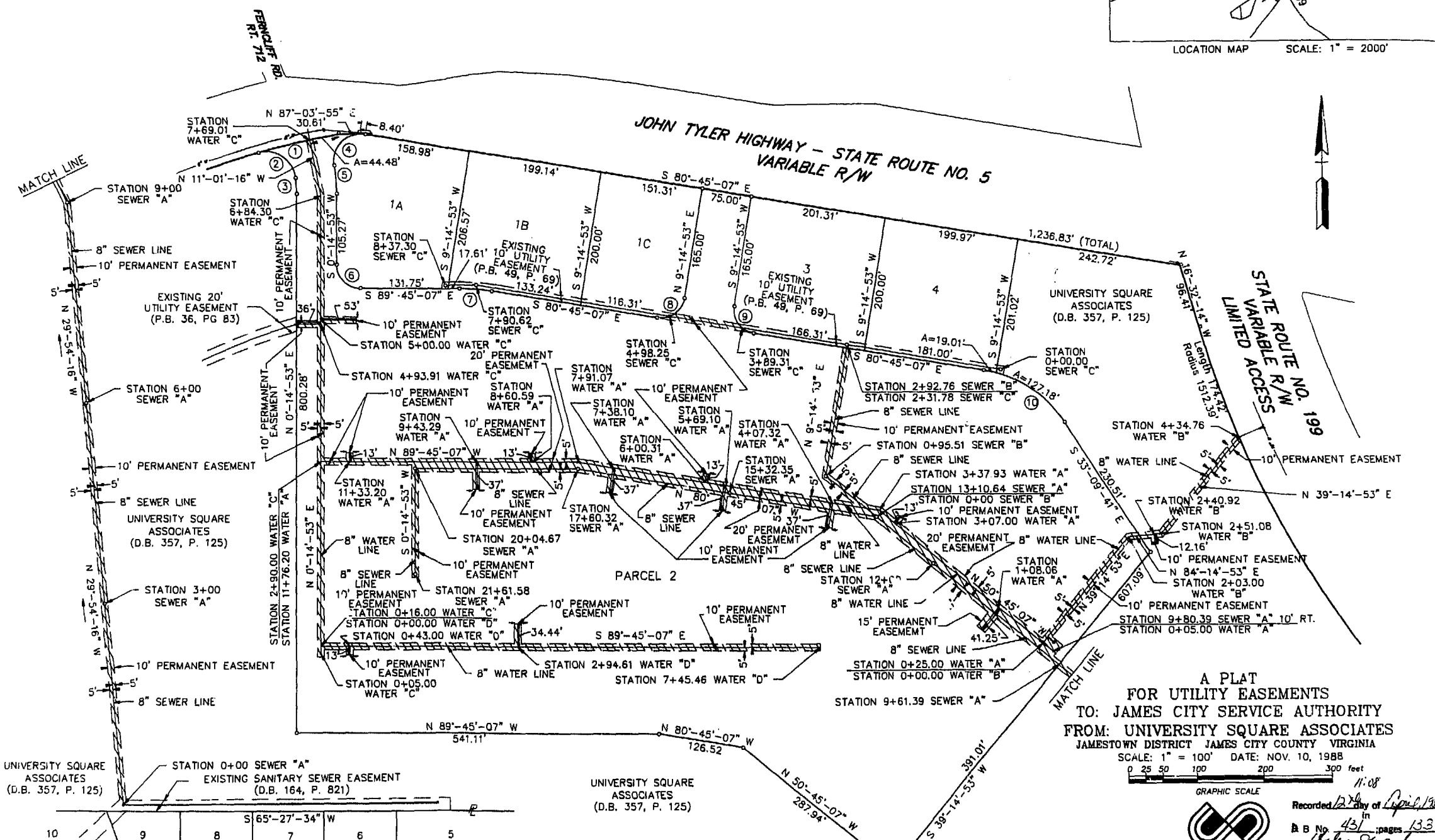
CURVE DATA

NO.	RADIUS	DELTA	TANGENT	ARC	CHORD	CHORD BEARING
1	1187.73'	5°-59'-46"	62.21'	124.30'	124.24'	N 77°-47'-15" E
2	45.00'	98°-12'-03"	51.95'	77.13'	68.03'	N 56°-06'-37" W
3	188.00'	7°-15'-28"	11.92'	23.81'	23.80'	N 3°-22'-51" W
4	40.00'	108°-49'-15"	55.89'	75.97'	65.06'	S 44°-50'-16" W
5	248.00'	9°-49'-15"	21.31'	42.51'	42.46'	S 4°-39'-44" E
6	35.00'	90°-00'-00"	35.00'	35.00'	49.50'	S 44°-45'-07" E
7	310.00'	8°-00'-00"	24.40'	48.69'	48.64'	S 85°-15'-07" E
8	35.00'	90°-00'-00"	35.00'	35.00'	49.50'	N 54°-14'-53" E
9	35.00'	90°-00'-00"	35.00'	35.00'	49.50'	S 35°-45'-07" E
10	176.00'	47°-35'-26"	77.61'	146.19'	142.02'	S 56°-57'-24" E

REFERENCE: P.B. 49, PG. 69



LOCATION MAP SCALE: 1" = 2000'



A PLAT
FOR UTILITY EASEMENTS
TO: JAMES CITY SERVICE AUTHORITY
FROM: UNIVERSITY SQUARE ASSOCIATES
JAMESTOWN DISTRICT JAMES CITY COUNTY VIRGINIA
SCALE: 1" = 100' DATE: NOV. 10, 1988
0 25 50 100 200 300 feet

GRAPHIC SCALE
Recorded 12th day of April, 1989
B.B. No. 431 in pages 133
John Steward Clerk

Smith Demer Normann
Engineers - Planners - Surveyors - Landscape Architects
2101 Executive Drive, Tower Box 50
Hampton, Virginia 23666
(804) 828-4800 (804) 827-8200

UNIVERSITY SQUARE ASSOCIATES (D.B. 357, P. 125)
WINSTON TERRACE SECTION TWO (P.B. 18, P. 20)
WINSTON TERRACE SECTION ONE (P.B. 17, P. 11)

UNIVERSITY SQUARE ASSOCIATES (D.B. 357, P. 125)

