

**LOT CURVE DATA**

NO.	DELTA	RADIUS	LENGTH	TANGENT	CHORD	CHORD BEARING
86A	11°28'00"	514.02'	102.87'	51.61'	102.70'	S15°06'01"E
86B	60°00'00"	50.00'	52.36'	28.87'	50.00'	S09°10'00"W
86C	85°09'26"	50.00'	74.31'	45.94'	67.66'	S03°24'43"E
87	47°08'17"	50.00'	41.14'	21.81'	39.99'	S69°33'35"E
88	23°04'44"	50.00'	20.14'	10.21'	20.00'	N75°19'54"E
89	63°16'30"	50.00'	55.22'	30.81'	52.45'	N32°09'17"E
90	21°21'02"	50.00'	18.3'	9.43'	18.52'	N10°09'29"W
91	11°19'54"	464.02'	91.77'	46.04'	91.62'	N15°10'03"W
92	18°19'31"	464.02'	148.41'	74.85'	147.78'	N00°20'21"W
93	01°58'31"	464.02'	16.00'	8.00'	16.00'	N12°17'03"E
94A	24°50'03"	285.07'	123.56'	62.77'	122.60'	N25°41'20"E
94B	99°24'34"	25.00'	43.38'	29.48'	38.14'	N87°48'38"E
94C	14°25'59"	486.97'	122.67'	61.66'	122.35'	S49°42'05"E
95A	30°50'49"	410.00'	220.74'	113.11'	218.08'	S43°22'17"E
95B	94°47'53"	25.00'	41.36'	27.19'	36.80'	S19°27'04"W
95C	42°52'40"	128.74'	96.34'	50.55'	94.11'	S88°17'20"W
95D	61°49'28"	5.00'	53.95'	29.94'	51.37'	N39°21'36"W
95E	45°59'46"	5.00'	40.14'	21.22'	39.07'	N31°26'45"W
96A	06°48'04"	41.00'	48.67'	24.36'	48.64'	S62°11'43"E
96B	47°09'38"	50.00'	41.16'	21.82'	40.00'	N78°01'27"W
97	35°07'34"	50.00'	30.65'	15.83'	30.18'	S60°49'57"W
98	36°33'58"	50.00'	31.91'	16.52'	31.37'	S24°59'11"W
99	28°57'18"	50.00'	25.27'	12.91'	25.00'	S31°06'47"E
100	22°49'50"	50.00'	19.92'	10.10'	19.79'	S57°00'13"E
101	03°12'43"	178.74'	178.74'	5.01'	10.02'	S70°01'38"E
102	27°51'42"	178.74'	86.92'	44.33'	86.06'	S85°23'50"E
103A	13°39'19"	178.74'	21.40'	21.40'	42.50'	N73°40'39"E
103B	100°08'33"	25.00'	43.70'	29.87'	38.34'	S63°04'43"E
103C	08°31'27"	410.00'	61.00'	30.56'	60.94'	S08°44'44"E

**GREENWAY CURVE DATA**

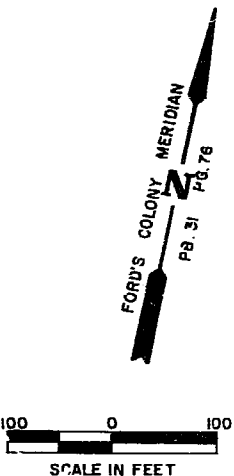
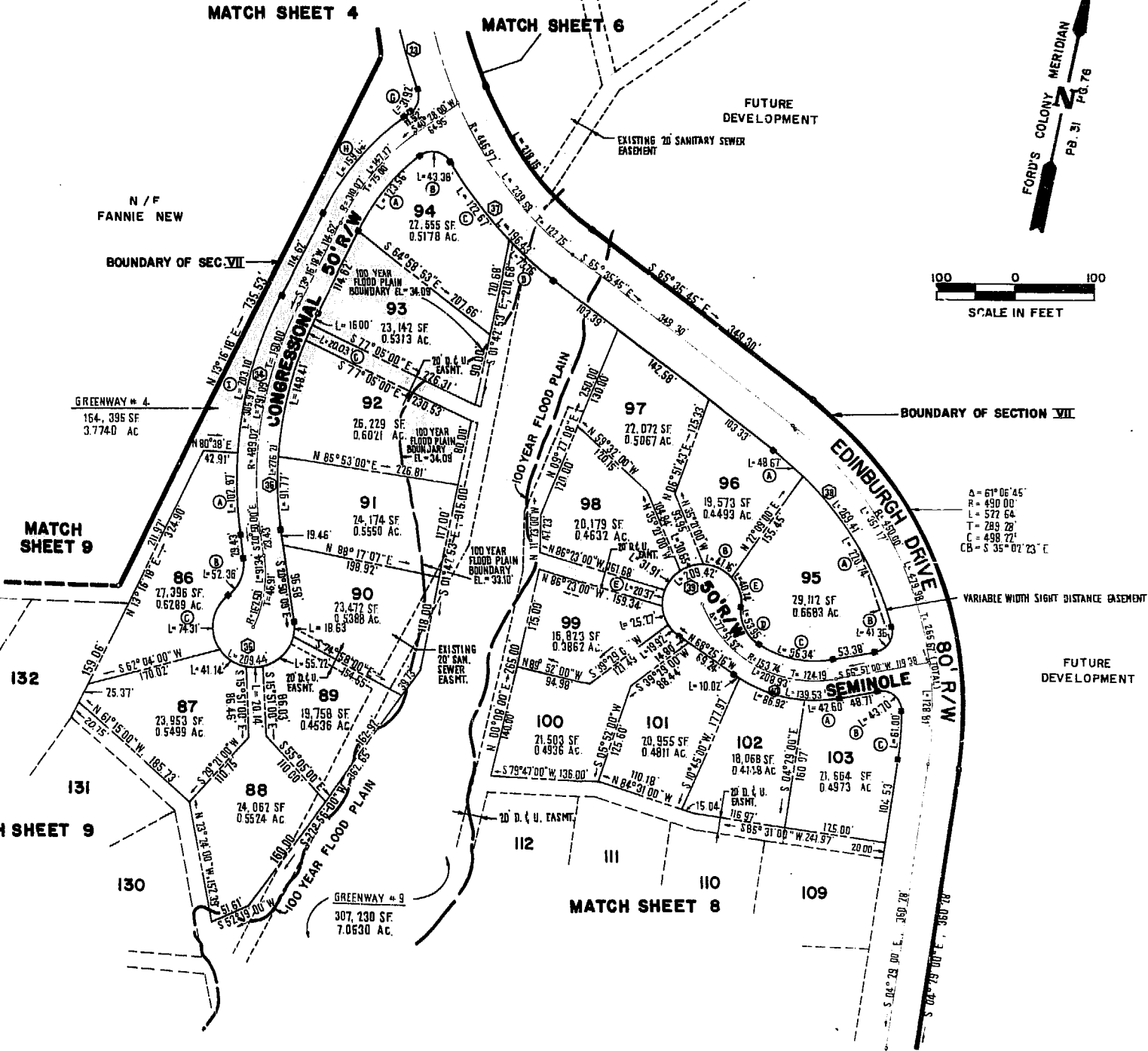
NO.	DELTA	RADIUS	LENGTH	TANGENT	CHORD	CHORD BEARING
4G	73°09'59"	25.00'	31.92'	18.56'	29.80'	S03°53'00"W
4H	27°11'42"	335.07'	159.04'	81.06'	157.55'	S26°52'09"W
4I	22°38'18"	514.02'	203.10'	102.89'	201.78'	S01°57'09"W
9C	02°28'22"	464.02'	20.03'	10.01'	20.02'	N10°03'36"E
9D	08°40'41"	486.97'	73.76'	36.95'	73.69'	S61°15'24"E
9E	23°20'20"	50.00'	20.37'	10.33'	20.23'	S04°57'58"E

**RIGHT-OF-WAY CURVE DATA**

NO.	DELTA	RADIUS	LENGTH	TANGENT	CHORD	CHORD BEARING
23	11°59'28"	890.00'	186.27'	93.47'	185.93'	S26°42'15"E
34	34°06'18"	514.02'	305.97'	157.67'	301.47'	N03°46'51"W
35	240°00'00"	50.00'	209.44'	—	86.60'	N80°50'00"W
36	34°06'18"	464.02'	276.21'	142.33'	272.15'	S03°46'51"E
37	23°06'40"	486.97'	196.43'	99.57'	195.10'	S54°02'25"E
38	37°38'52"	410.00'	269.40'	139.77'	264.58'	S46°46'19"E
39	239°58'24"	50.00'	209.42'	—	86.62'	N51°33'54"E
40	44°43'44"	178.74'	139.53'	73.54'	136.02'	S89°12'52"W

**SIGHT DISTANCE EASEMENT**

NOTE: NO VISUAL OBSTRUCTIONS (TO INCLUDE BUT NOT LIMITED TO LANDSCAPING, FENCES, OR OTHER STRUCTURES) SHALL BE ALLOWED WITHIN THE SIGHT DISTANCE EASEMENTS SHOWN ON THIS PLAN.



**This sheet pertains to lots 86-103**



**AES**, a professional corporation  
 1761 Jamestown Road, Williamsburg, Va. 23185  
 804-253-0040  
 Engineering, Planning, Surveying

**PLAT OF**  
**FORD'S COLONY**  
**@ WILLIAMSBURG**  
**SECTION VII**

BERKELEY DISTRICT      JAMES CITY COUNTY      VIRGINIA



NO.	DATE	REVISION / COMMENT / NOTE	BY

Designed LCA/AES	Drawn BB
Scale 1"=100'	Date DEC.1998
Project No. <b>5652</b>	
Drawing No. <b>7 of 10</b>	

