

RIGHT-OF-WAY CURVE DATA

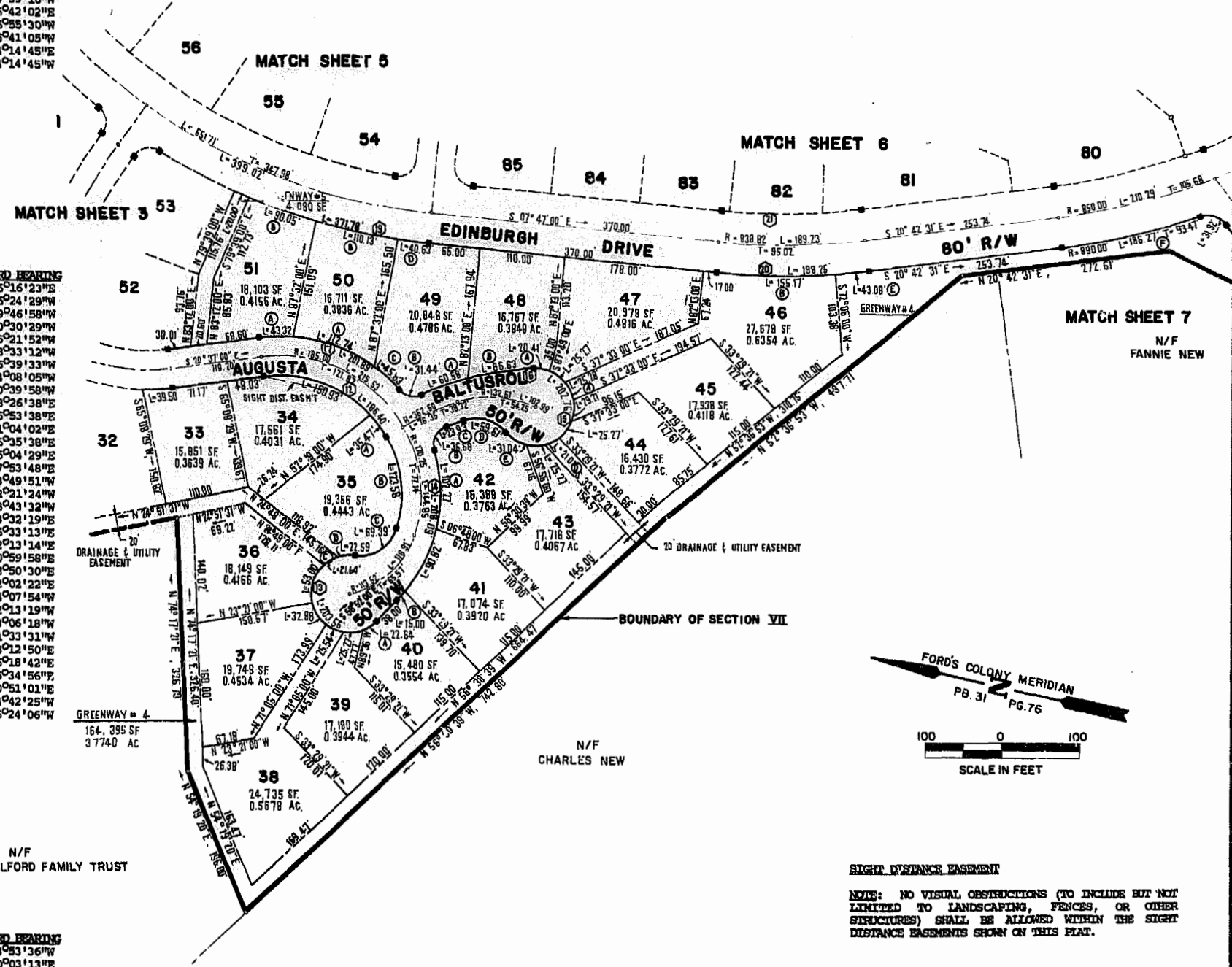
NO.	DELTA	RADIUS	LENGTH	TANGENT	CHORD	CHORD BEARING
11	36°45'06"	260.55'	167.13'	86.55'	164.28'	N02°14'27"W
12	66°45'00"	160.00'	186.40'	105.40'	176.04'	N12°45'30"E
13	233°15'25"	50.00'	203.56'	—	89.39'	N57°45'42"E
14	61°03'51"	195.25'	208.39'	115.16'	198.38'	N89°23'55"W
15	232°20'33"	50.00'	202.76'	—	89.75'	N79°39'10"W
16	21°45'57"	387.50'	147.20'	74.50'	146.32'	S26°42'02"E
17	55°04'59"	210.00'	201.89'	109.51'	194.20'	S06°55'30"W
19	26°56'10"	790.81'	371.78'	189.39'	368.36'	S05°41'08"W
20	12°55'31"	878.82'	198.25'	99.55'	197.83'	S14°14'45"E
21	12°55'31"	798.82'	180.20'	90.49'	179.82'	N14°14'45"W

NO.	DELTA	RADIUS	LENGTH	TANGENT	CHORD	CHORD BEARING
33	08°41'14"	260.55'	39.50'	19.79'	39.47'	S16°16'23"E
34	54°02'57"	160.00'	150.93'	81.61'	145.40'	S06°24'29"W
35A	12°42'03"	160.00'	35.47'	17.81'	35.39'	S39°46'58"W
35B	48°44'51"	145.25'	123.58'	65.81'	119.89'	S70°30'29"W
35C	79°30'34"	50.00'	69.39'	41.59'	63.95'	N45°21'52"W
35D	25°53'14"	50.00'	22.59'	11.49'	22.40'	N18°33'12"W
36	60°44'20"	50.00'	53.00'	29.30'	50.56'	N86°39'33"W
37	37°40'23"	50.00'	32.88'	17.06'	32.29'	S44°08'05"W
38	29°15'52"	50.00'	25.54'	13.05'	25.26'	S10°39'58"W
39	28°57'18"	50.00'	25.27'	12.91'	25.00'	S18°26'38"E
40A	25°56'43"	50.00'	22.64'	11.52'	22.45'	S45°53'38"E
40B	04°24'05"	195.25'	15.00'	7.50'	15.00'	S61°04'02"E
41	26°39'05"	195.25'	90.82'	46.25'	90.01'	S76°35'38"E
42A	30°00'40"	195.25'	102.27'	52.34'	101.11'	N73°04'29"E
42B	84°04'05"	25.00'	36.68'	22.54'	33.48'	S77°53'48"E
42C	04°03'50"	337.50'	23.94'	11.97'	23.93'	N33°49'51"W
42D	68°28'40"	50.00'	59.61'	33.92'	56.14'	S02°21'24"W
42E	35°34'24"	50.00'	31.04'	16.04'	30.55'	S18°43'32"W
43	28°57'20"	50.00'	25.27'	12.91'	25.00'	S13°32'19"E
44	28°57'12"	50.00'	25.27'	12.91'	25.00'	S66°33'13"E
45	73°28'24"	50.01'	29.21'	15.04'	28.80'	N82°13'14"E
46A	28°57'39"	50.01'	25.28'	12.91'	25.01'	N50°59'58"E
46B	10°07'00"	878.82'	155.17'	77.79'	154.97'	S12°50'30"E
47	28°57'18"	50.00'	25.27'	12.91'	25.00'	N22°02'22"E
48A	23°23'15"	50.00'	20.41'	10.35'	20.27'	N04°07'54"W
48B	12°48'31"	387.50'	86.63'	43.49'	86.45'	N22°13'19"W
49A	08°57'26"	387.50'	60.58'	30.35'	60.52'	N33°06'18"W
49B	72°03'00"	25.00'	31.44'	18.18'	29.41'	N01°33'31"W
49C	12°30'18"	210.00'	45.83'	23.01'	45.74'	N26°12'50"E
49D	02°56'37"	790.81'	40.63'	20.32'	40.62'	S06°18'42"E
50A	30°45'30"	210.00'	112.74'	57.76'	111.39'	N06°34'56"E
50B	07°58'46"	790.81'	110.13'	55.16'	110.04'	S00°51'01"E
51A	11°49'11"	210.00'	43.32'	21.74'	43.24'	N14°42'25"W
51B	06°31'28"	790.81'	90.05'	45.07'	90.00'	S06°24'06"W

LOT CURVE DATA

GREENWAY CURVE DATA

NO.	DELTA	RADIUS	LENGTH	TANGENT	CHORD	CHORD BEARING
4C	24°47'34"	50.00'	21.64'	10.99'	21.47'	N43°33'36"W
4D	24°04'27"	50.00'	21.01'	10.66'	20.85'	S40°03'13"E
5	01°26'57"	790.81'	20.00'	10.00'	20.00'	S10°23'18"W
4E	02°48'31"	878.82'	43.08'	21.54'	43.07'	S19°18'16"E
4F	11°59'28"	890.00'	186.27'	93.47'	185.93'	S26°42'15"E



This sheet pertains to lots 33-51



AES, a professional corporation
 1781 Jamestown Road, Williamsburg, Va. 23186
 804-253-0040
 Engineering, Planning, Surveying

PLAT OF FORD'S COLONY @ WILLIAMSBURG SECTION VII
 BERKELEY DISTRICT JAMES CITY COUNTY VIRGINIA



NO.	DATE	REVISION / COMMENT / NOTE	BY

Designed LCA/AES	Drawn BB
Scale 1"=100'	Date DEC. 1988
Project No. 5652	
Drawing No. 4 of 10	

