

CURVE DATA

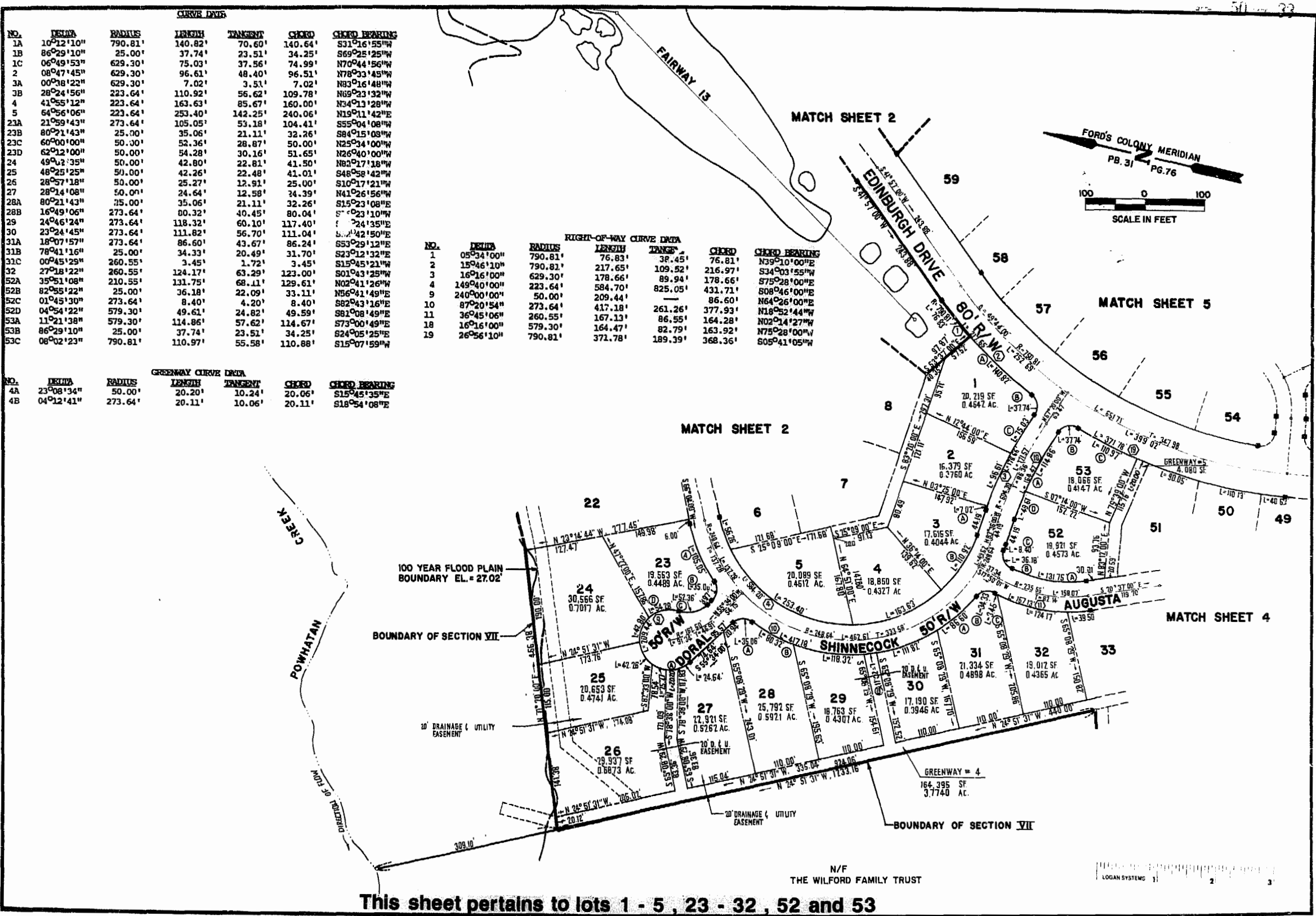
NO.	DELTA	RADIUS	LENGTH	TANGENT	CHORD	CHORD BEARING
1A	10°12'10"	790.81'	140.82'	70.60'	140.64'	S31°16'55"W
1B	86°29'10"	25.00'	37.74'	23.51'	34.25'	S69°25'125"W
1C	06°49'53"	629.30'	75.03'	37.56'	74.99'	N70°44'56"W
2	08°47'45"	629.30'	96.61'	48.40'	96.51'	N78°33'45"W
3A	00°38'22"	629.30'	7.02'	3.51'	7.02'	N83°16'48"W
3B	28°24'56"	223.64'	110.92'	56.62'	109.78'	N89°23'32"W
4	41°55'12"	223.64'	163.63'	85.67'	160.00'	N34°13'28"W
5	64°56'06"	223.64'	253.40'	142.25'	240.06'	N19°11'42"E
23A	21°59'43"	273.64'	105.05'	53.18'	104.41'	S55°04'08"W
23B	80°21'43"	25.00'	35.06'	21.11'	32.26'	S84°15'08"W
23C	60°00'00"	50.00'	52.36'	28.87'	50.00'	N25°34'00"W
23D	62°12'00"	50.00'	54.28'	30.16'	51.65'	N26°40'00"W
24	49°12'35"	50.00'	42.80'	22.81'	41.50'	N82°17'18"W
25	48°25'25"	50.00'	42.26'	22.48'	41.01'	S48°58'42"W
26	28°57'18"	50.00'	25.27'	12.81'	25.00'	S10°17'21"W
27	28°14'08"	50.00'	24.64'	12.58'	24.39'	N41°26'56"W
28A	80°21'43"	25.00'	35.06'	21.11'	32.26'	S15°23'08"E
28B	16°49'06"	273.64'	80.32'	40.45'	80.04'	S°23'10"W
29	24°46'24"	273.64'	118.32'	60.10'	117.40'	S°24'35"E
30	23°24'45"	273.64'	111.82'	56.70'	111.04'	S°42'50"E
31A	18°07'57"	273.64'	86.60'	43.67'	86.24'	S53°29'12"E
31B	78°41'16"	25.00'	34.33'	20.49'	31.70'	S23°12'32"E
31C	00°45'29"	260.55'	3.45'	1.72'	3.45'	S15°45'21"W
32	27°18'22"	260.55'	124.17'	63.29'	123.00'	S01°43'25"W
52A	35°51'08"	210.55'	131.75'	68.11'	129.61'	N02°41'26"W
52B	82°55'22"	25.00'	36.18'	22.09'	33.11'	N56°41'49"E
52C	01°45'10"	273.64'	8.40'	4.20'	8.40'	S82°43'16"E
52D	04°54'22"	579.30'	49.61'	24.82'	49.59'	S81°08'49"E
53A	11°21'38"	579.30'	114.86'	57.62'	114.67'	S73°00'49"E
53B	86°29'10"	25.00'	37.74'	23.51'	34.25'	S24°05'25"E
53C	06°02'23"	790.81'	110.97'	55.58'	110.88'	S15°07'59"W

RIGHT-OF-WAY CURVE DATA

NO.	DELTA	RADIUS	LENGTH	TANGENT	CHORD	CHORD BEARING
1	05°34'00"	790.81'	76.83'	38.45'	76.81'	N39°10'00"E
2	15°46'10"	790.81'	217.65'	109.52'	216.97'	S34°03'55"W
3	16°16'00"	629.30'	178.66'	89.94'	178.66'	S75°28'00"E
4	149°40'00"	223.64'	584.70'	825.05'	431.71'	S08°46'00"E
9	240°00'00"	50.00'	209.44'	—	86.60'	N64°26'00"E
10	87°20'54"	273.64'	417.18'	261.26'	377.93'	N18°52'44"W
11	36°45'06"	260.55'	167.13'	86.55'	164.28'	N02°14'27"W
18	16°16'00"	579.30'	164.47'	82.79'	163.92'	N75°28'00"W
19	26°56'10"	790.81'	371.78'	189.39'	368.36'	S05°41'05"W

GREENWAY CURVE DATA

NO.	DELTA	RADIUS	LENGTH	TANGENT	CHORD	CHORD BEARING
4A	23°08'34"	50.00'	20.20'	10.24'	20.06'	S15°45'35"E
4B	04°12'41"	273.64'	20.11'	10.06'	20.11'	S18°54'08"E



This sheet pertains to lots 1 - 5 , 23 - 32 , 52 and 53



AES, a professional corporation
 1781 Jamestown Road, Williamsburg, Va. 23185
 804-253-0040
 Engineering, Planning, Surveying

PLAT OF
FORD'S COLONY
 @ **WILLIAMSBURG**
 SECTION VII

BERKELEY DISTRICT JAMES CITY COUNTY VIRGINIA



NO.	DATE	REVISION / COMMENT / NOTE	BY

Designed LCA/AES	Drawn BB
Scale 1"=100'	Date DEC-1588
Project No. 5652	
Drawing No. 3 of 10	

