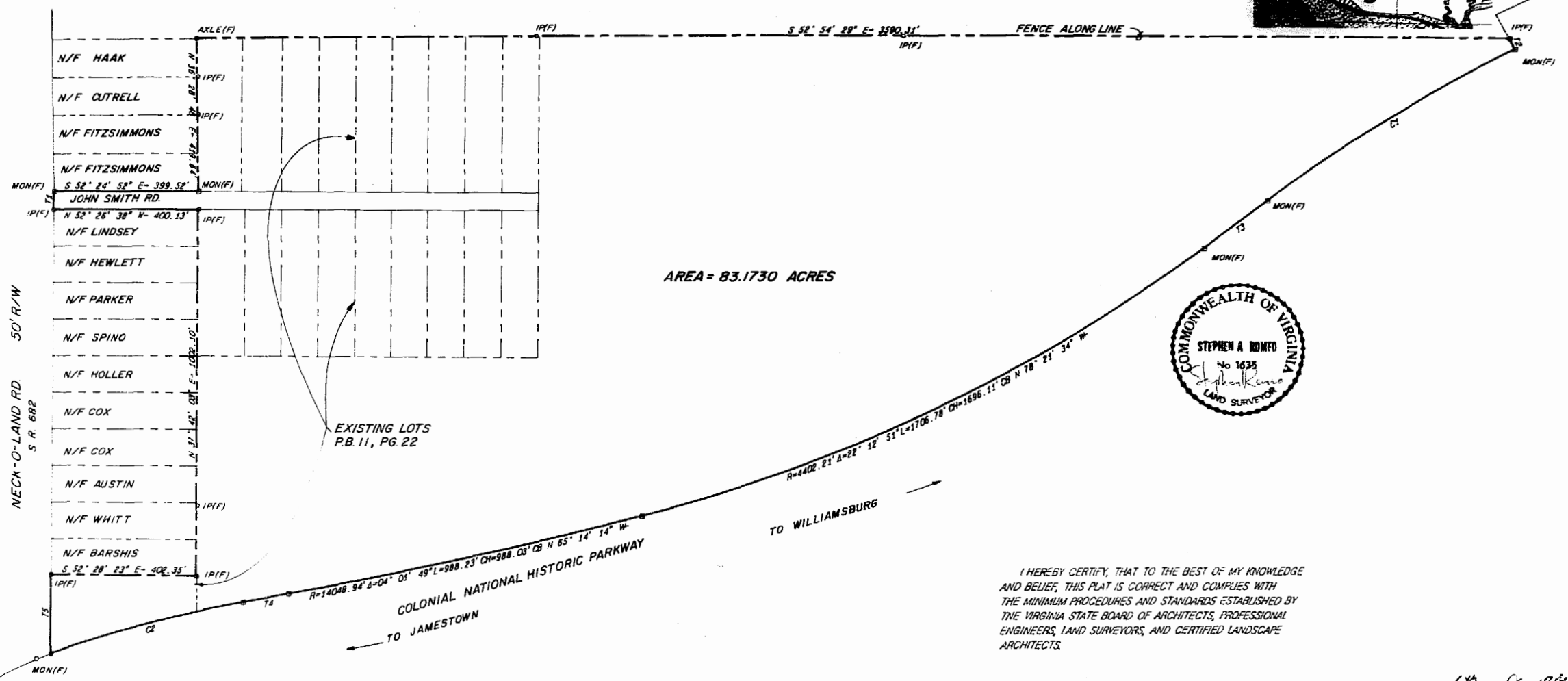


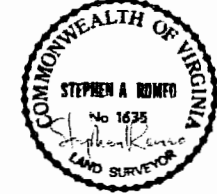


RECORD NORTH
P.B. 9, PG. 39

N/F
MILL CREEK LANDING, LTD.



AREA = 83.1730 ACRES



I HEREBY CERTIFY, THAT TO THE BEST OF MY KNOWLEDGE AND BELIEF, THIS PLAT IS CORRECT AND COMPLIES WITH THE MINIMUM PROCEDURES AND STANDARDS ESTABLISHED BY THE VIRGINIA STATE BOARD OF ARCHITECTS, PROFESSIONAL ENGINEERS, LAND SURVEYORS, AND CERTIFIED LANDSCAPE ARCHITECTS.

STATE OF VIRGINIA, COUNTY OF JAMES CITY
 In the clerk's office of the circuit court of
 the County of James City this 6 day of
Jan, 1989. The map shows
 hereon was prepared and admitted to the record as
 the true correct.
 Teste: William Stewart Clerk
 File Book: 52 Page: 17

Recorded 6th day of Jan 1989
 in
 Book No. 422 Page 104
William Stewart

PLAT OF PROPERTY OF
 BENSON PHILLIPS CO. INC.
 D.B. 30, PG. 261

LABEL	BEARING	DISTANCE	LABEL	RADIUS	CENTRAL ANGLE	ARC LENGTH	CHORD LENGTH	CHORD BEARING
T1	N 38° 12' 53" E	49.92	C1	4638.87	09° 55' 18"	804.65	803.64	N 84° 29' 51" N
T2	S 10° 30' 00" N	33.14	C2	3474.52	09° 08' 48"	554.67	554.08	N 67° 47' 44" N
T3	N 88° 28' 00" N	217.83						
T4	N 63° 13' 20" N	127.10						
T5	N 37° 49' 39" E	217.09						

REFERENCES
 P.B. 11, PG. 22
 P.B. 27, PG. 43



JAMESTOWN DISTRICT
 COUNTY OF JAMES CITY, VIRGINIA
 DATE: 29 DECEMBER 1988 SCALE: 1" = 200'
 Langley and McDonald, P.C.
 ENGINEERS PLANNERS SURVEYORS
 VIRGINIA BEACH AND WILLIAMSBURG, VIRGINIA