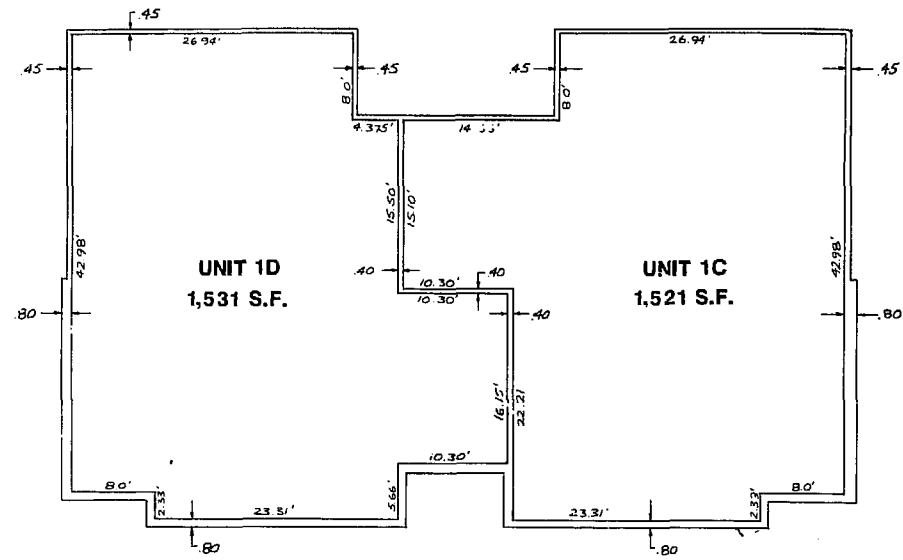


TABLE OF ELEVATIONS

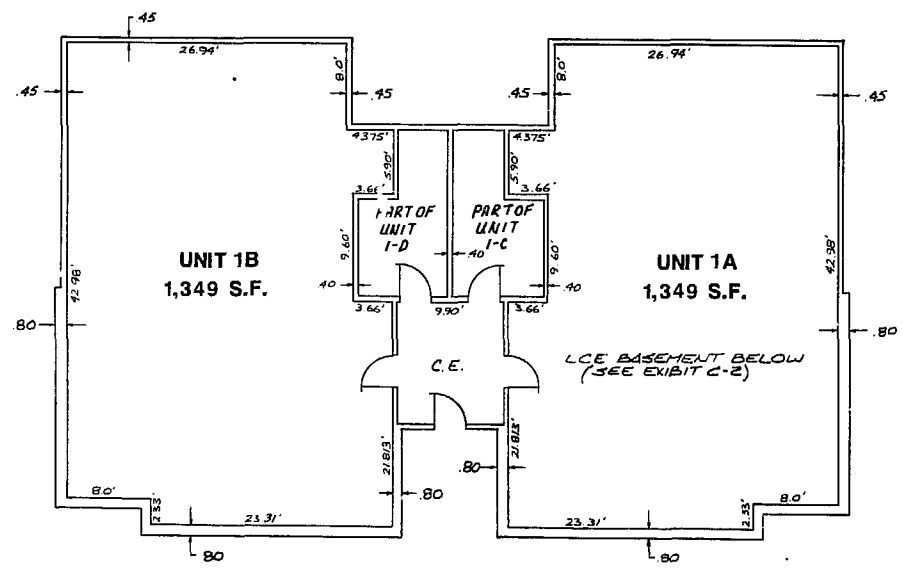
UNIT NO.	SUBFLOOR ELEV.	FACE OF CEILING DRYWALL
1A	77.19'	85.16'
1B	77.19'	85.16'
1C	86.17'	94.14'
1D	86.17'	94.14'

WE HEREBY CERTIFY THAT WE HAVE SURVEYED ALL OF THE UNITS OR PORTIONS THEREOF AND DO FURTHER CERTIFY THAT THE PLANS ARE ACCURATE AND THEY COMPLY WITH SECTION 55-79.56 (B) OF THE CODE OF VIRGINIA AS AMENDED. ALL STRUCTURES ARE SUBSTANTIALLY COMPLETE.

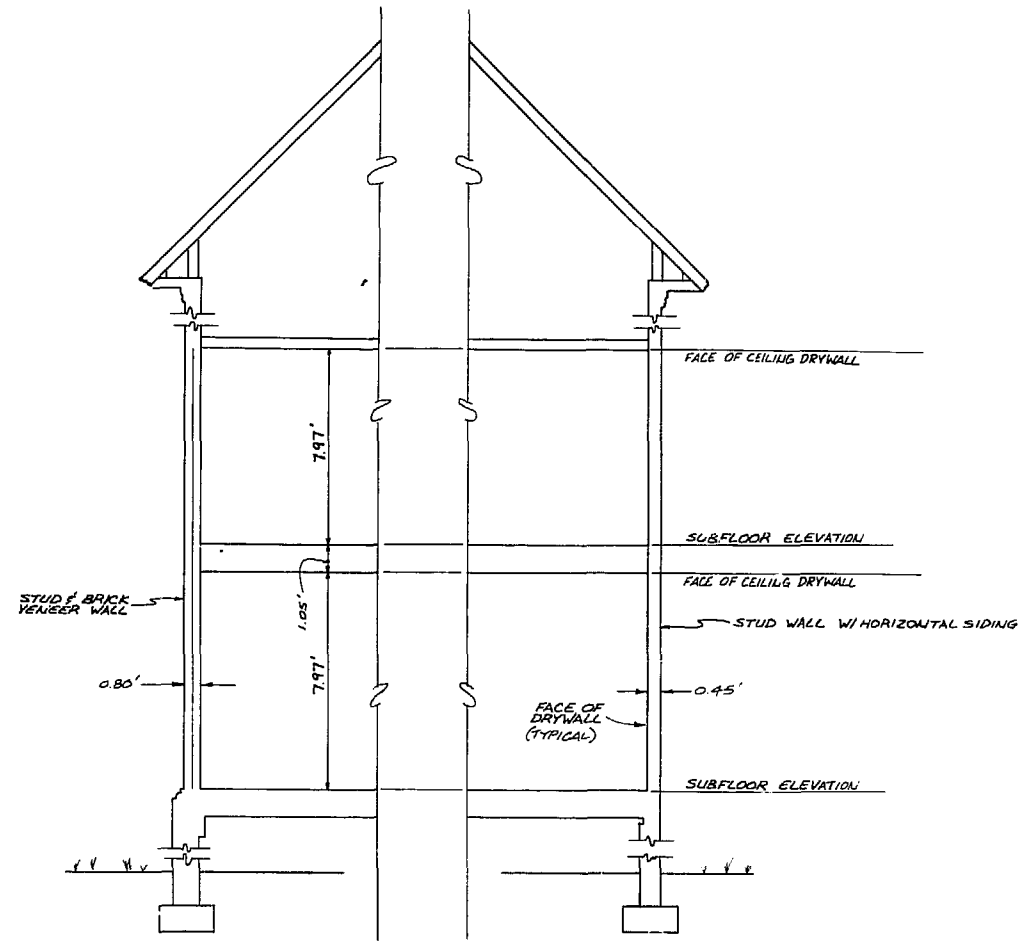
AES, A PROFESSIONAL CORPORATION
 BY: *G. Archer Marston III*
 G. ARCHER MARSTON, III, P.E.
 CERTIFICATE NO. 018232



SECOND FLOOR
 SCALE 1" = 10'



FIRST FLOOR
 SCALE 1" = 10'



SECTION
 SCALE 1" = 4'

NOTES: C.E. DENOTES "COMMON ELEMENT"
 L.C.E. DENOTES "LIMITED COMMON ELEMENT"

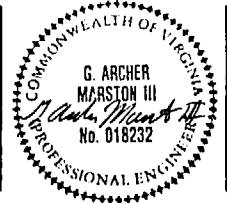


3:42 p.m.
 Recorded: 23rd day of Nov 1988
 in 86 pages 476
Andrew S. Ward Clerk
Myra Ann R. Watts Insp. Clerk



AES, a professional corporation
 1761 Jamestown Road, Williamsburg, Va. 23185
 804-253-0040
 Engineering, Planning, Surveying

CONDOMINIUM PLAT
THE WOODLANDS A CONDOMINIUM
PHASE II
 OWNER/DEVELOPER : S.W.N. ASSOCIATES
 CITY OF WILLIAMSBURG VIRGINIA



No.	DATE	REVISION / COMMENT / NOTE	BY

Designed	Drawn
GAM	GAM
Scale	Date
AS SHOWN	JULY, 1988
Project No.	
6119	
Drawing No.	
EXHIBIT C-1	

