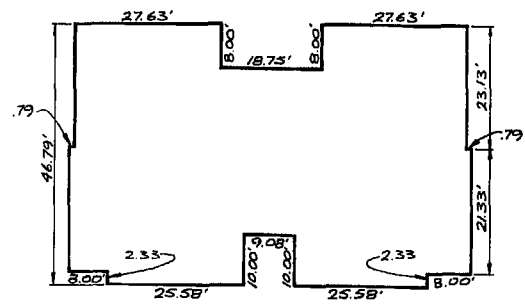
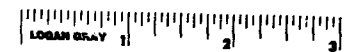
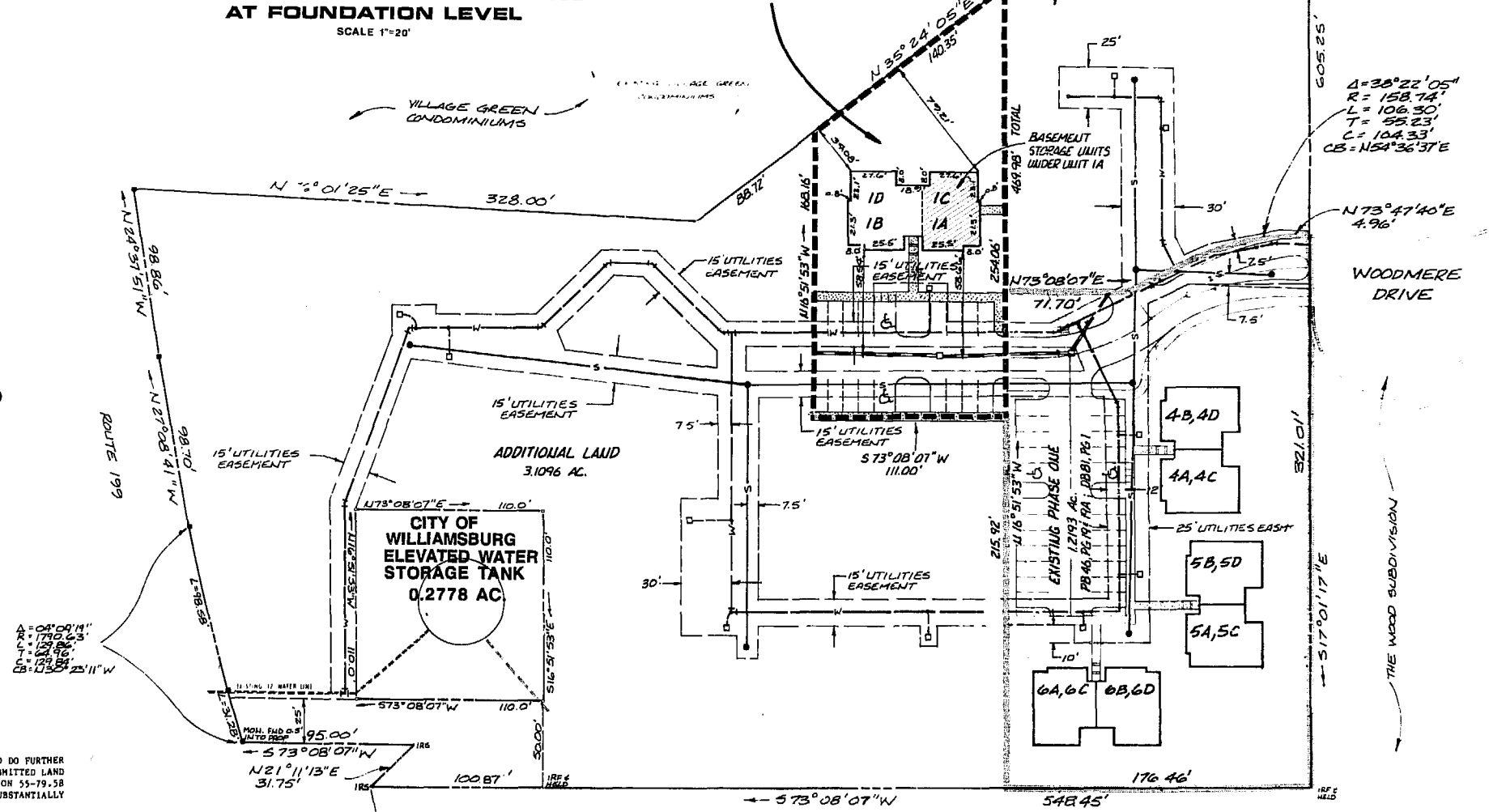


LOCATION MAP
SCALE: 1"=2000'



TYPICAL EXTERIOR DIMENSIONS AT FOUNDATION LEVEL
SCALE 1"=20'

PHASE II
0.5380 Ac.



NOTE: ALL UTILITY EASEMENTS SHOWN HEREON ARE HEREBY DEDICATED TO THE CITY OF WILLIAMSBURG
(SEE "PLAT OF DRAINAGE / UTILITIES EASEMENTS", DATED AUG. 1987) DB 81, PG 423

--- DENOTES PHASE BOUNDARY
--- DENOTES EXISTING PHASE BOUNDARY

A = 04°09'14"
R = 1750.63'
L = 121.86'
T = 121.86'
C = 121.86'
CB = N35°25'11"W

WE DO HEREBY CERTIFY THAT WE HAVE SURVEYED THE SUBMITTED LAND AND DO FURTHER CERTIFY THAT THIS PLAT SHOWING LOCATION AND DIMENSIONS OF THE SUBMITTED LAND IS ACCURATE AND THE PLAT COMPLIES WITH THE PROVISIONS OF SECTION 55-79.58 (a) OF THE CODE OF VIRGINIA AS AMENDED. ALL UNITS HAVE BEEN SUBSTANTIALLY COMPLETED.

AES, A PROFESSIONAL CORPORATION

BY: G.T. WILSON, JR.
G.T. WILSON, JR. C.L.S.

3:42 p.m.
Recorded: 23rd day of Nov. 1988
in 86 pages 476
Noted and Clerk
L. Noun 21 Nov 1988
REF: PB 21, P. 40
VDH ORN-CAT-101, PE 101
SV-301, C-301, SHEETS 7, 8



AES, a professional corporation
1761 Jamestown Road, Williamsburg, Va. 23185
804-253-0040
Engineering, Planning, Surveying

CONDOMINIUM PLAT
THE WOODLANDS A CONDOMINIUM
PHASE II
OWNER/DEVELOPER : S.W.N. ASSOCIATES
CITY OF WILLIAMSBURG VIRGINIA



No.	DATE	REVISION / COMMENT / NOTE	BY

Designed GAM	Drawn GSB
Scale 1"=50'	Date JULY, 1988
Project No. 6119	
Drawing No. EXHIBIT B	

