



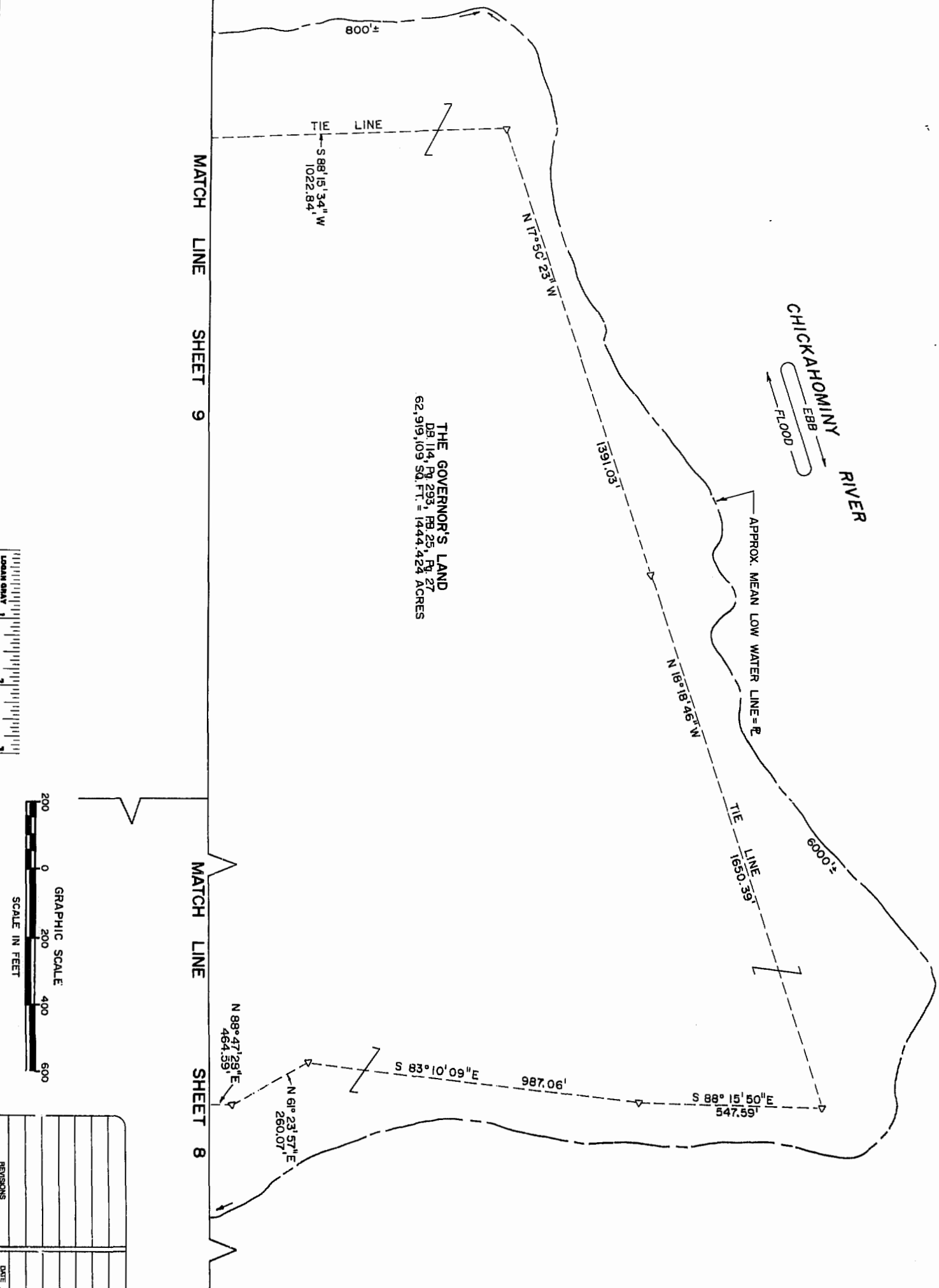
JAMES RIVER
 EBB →
 ← FLOOD

CHICKAHOMINY RIVER
 EBB →
 ← FLOOD

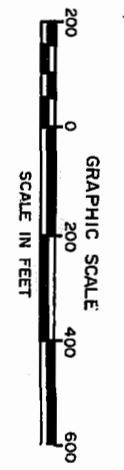
THE GOVERNOR'S LAND
 DB 114, PG 293, FB 25, PG 27
 62,919,109 SQ. FT. = 1444.424 ACRES

MATCH LINE SHEET 9

MATCH LINE SHEET 8



LOOK ONLY



REVISIONS	DATE

DATE 08 JULY 1988
 SCALE 1" = 200'
 DESIGNER W.K. DRAWN B.W.
 CHECKER
 JOB NO. VB07572000
 PER NO.
 SHEET 10 OF 10
 FILE NO.

BOUNDARY SURVEY OF
THE GOVERNOR'S LAND
 Located in James City County, Virginia
 REFERENCE: DEED BOOK 114 PAGE 293
 PLAT BOOK 25 PAGE 27

BENGTSON, DEBELL, ELKIN & TITUS, LTD.
 ENGINEERS • SURVEYORS • PLANNERS • LANDSCAPE ARCHITECTS
 184 BUSINESS PARK DRIVE, SUITE 203, VIRGINIA BEACH, VIRGINIA 23462
 (804) 490-3588 (804) 877-5000

BDET

OFFICE LOCATIONS
 ◆ CHIBBERFIELD COUNTY, VIRGINIA ◆ PRINCE WILLIAM COUNTY, VIRGINIA ◆ ANNIE ARUNDEL COUNTY, MARYLAND
 ◆ FAIRFAX COUNTY, VIRGINIA ◆ VIRGINIA BEACH, VIRGINIA ◆ MONTGOMERY COUNTY, MARYLAND
 ◆ LOUDOUN COUNTY, VIRGINIA