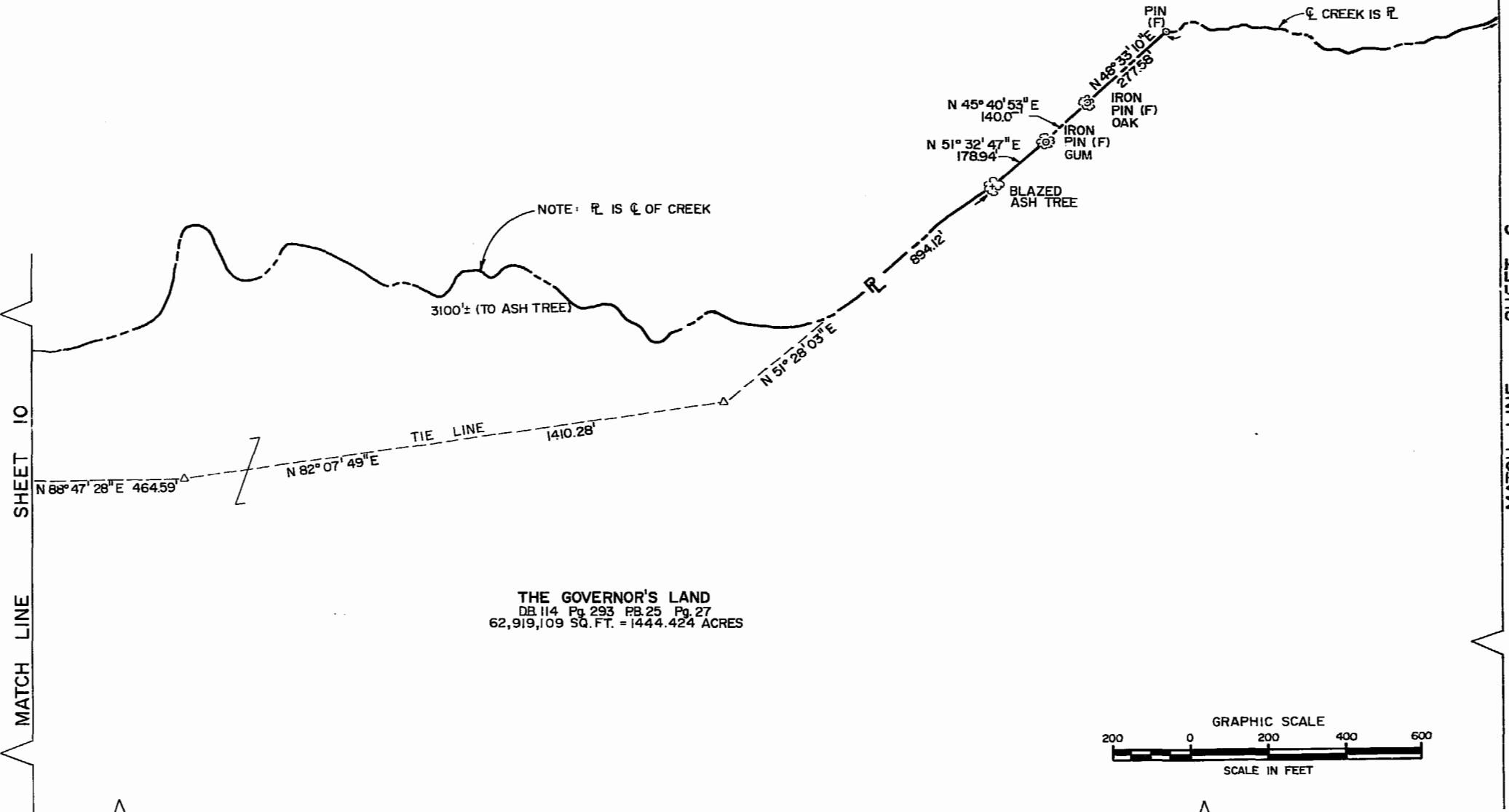
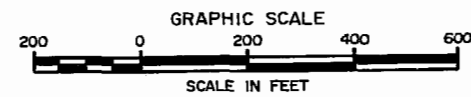




NOW OR FORMERLY
 JOSEPH S. TERRELL, INC.
 DB.101 Pg.64 DB.7 Pg.30



THE GOVERNOR'S LAND
 DB.114 Pg.293 PB.25 Pg.27
 62,919,109 SQ. FT. = 1444.424 ACRES

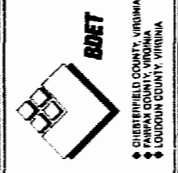


MATCH LINE SHEET 10

MATCH LINE SHEET 6

MATCH LINE SHEET 9

BENGTSON, DeBELL, ELKIN & TITUS, LTD.
 ENGINEERS • SURVEYORS • PLANNERS • LANDSCAPE ARCHITECTS
 184 BUSINESS PARK DRIVE, SUITE 103, VIRGINIA BEACH, VIRGINIA 23462
 (804) 496-3886 (804) 875-5080
 OFFICE LOCATIONS:
 • PRINCE GEORGE COUNTY, VIRGINIA
 • VIRGINIA BEACH, VIRGINIA
 • ANNE ARUNDEL COUNTY, MARYLAND
 • MONTGOMERY COUNTY, MARYLAND



BOUNDARY SURVEY
 OF
THE GOVERNOR'S LAND
 Located in James City County, Virginia
 REFERENCE: DEED BOOK 114 PAGE 293
 PLAT BOOK 25 PAGE 27

| | |
|-----------|--------------|
| DATE: | 08 JULY 1988 |
| SCALE: | 1" = 200' |
| DESIGN: | WK |
| DRAWN: | B.W. |
| CHECK: | CHECK |
| JOB NO.: | VB07572000 |
| P.R. NO.: | |
| SHEET: | 8 OF 10 |
| FILE NO.: | |

LOGAN GRAY 1 2 3

REVISIONS

DATE

