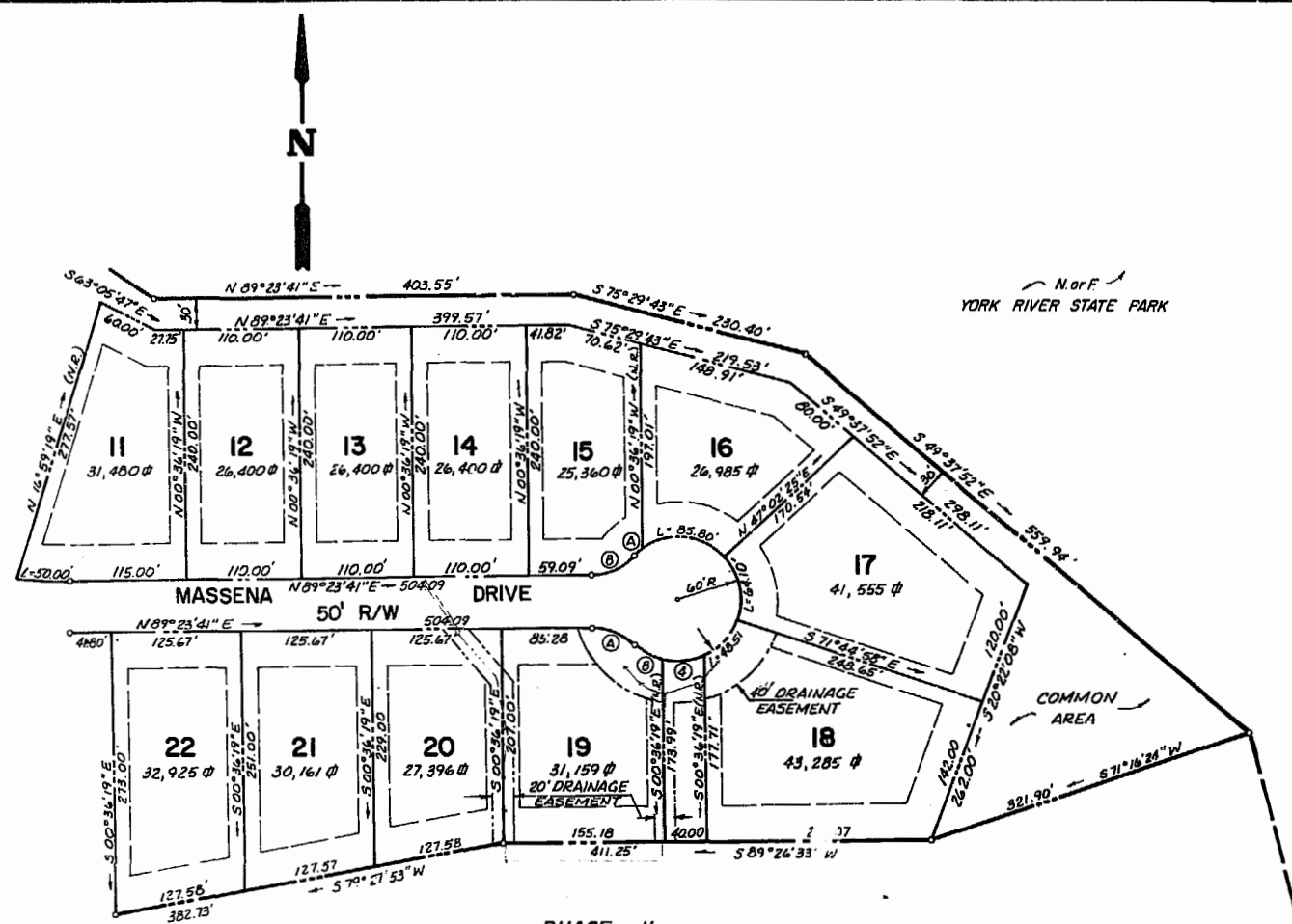


SEE SHEET NO. 1 of 2



LOT CURVE TABLE

CURVE NO.	DELTA	RADIUS	LEN/CH	TANGENT	CHORD	CHORD BEARING
1	02 41'48"	1127.63'	53.07'	26.54'	53.07'	N 26 13'03"E
2	08 05'16"	1682.77'	237.54'	118.97'	237.34'	N 23 31'18"E
3	02 39'19"	435.53'	20.18'	10.09'	20.18'	N 73 39'20"W
4	39 06'51"	60.00'	40.97'	21.31'	40.17'	S 84 07'44"W
5	06 41'56"	365.45'	42.73'	21.39'	42.70'	N 32 46'43"W

LOT NO.	DELTA	RADIUS	LENGTH	TANGENT	CHORD	CHORD BEARING
1A	04 13'03"	1440.38'	106.03'	53.04'	106.00'	N 74 39'20"W
1B	92 01'28"	25.00'	40.15'	25.90'	35.97'	N 26 32'04"W
2	04 54'45"	1440.38'	123.50'	61.79'	123.46'	N 79 13'13"W
3	01 11'59"	1440.38'	30.16'	15.08'	30.16'	N 82 16'36"W
7	07 53'36"	435.53'	60.00'	30.05'	59.95'	N 78 55'47"W
8	10 17'28"	435.53'	78.23'	39.22'	78.12'	N 67 10'57"W
9A	15 40'57"	399.47'	109.34'	55.01'	109.00'	N 60 43'04"W
9B	09 09'38"	435.53'	69.63'	34.89'	69.56'	N 57 27'24"W
10	14 52'29"	399.47'	103.71'	52.15'	103.42'	N 75 59'47"W
11	07 10'17"	399.47'	50.00'	25.03'	49.97'	N 87 01'10"W
15A	10 36'45"	60.00'	11.11'	5.57'	11.10'	S 49 48'02"W
15B	44 54'02"	60.00'	47.02'	24.79'	45.83'	S 66 56'40"W
16	81 56'00"	60.00'	65.80'	52.10'	72.67'	N 83 55'35"W
17	61 12'37"	60.00'	64.10'	35.49'	61.09'	N 12 21'16"W
18	46 19'17"	60.00'	48.51'	25.67'	47.20'	N 41 24'40"W
19A	44 54'02"	60.00'	47.02'	24.79'	45.83'	S 68 09'19"W
19B	30 36'33"	60.00'	32.05'	16.42'	31.67'	S 61 00'34"E
23	09 53'03"	449.47'	77.54'	38.87'	77.44'	S 85 39'48"E
24	15 59'04"	449.47'	125.39'	63.11'	124.99'	S 72 43'44"E
25A	05 52'57"	385.53'	39.58'	19.81'	39.56'	S 55 49'04"E
25B	11 51'37"	449.47'	93.04'	46.69'	92.87'	S 58 48'23"E
26	19 54'26"	385.53'	133.95'	67.66'	133.28'	S 68 42'48"E
27A	02 32'01"	526.25'	23.27'	11.64'	23.27'	N 05 51'24"E
27B	90 00'00"	25.00'	39.27'	25.00'	35.36'	S 52 07'25"E
27C	04 12'35"	385.53'	28.33'	14.17'	28.32'	S 80 46'18"E
28	17 15'23"	526.25'	158.50'	79.85'	157.90'	N 04 02'16"W
29	08 42'36"	526.25'	80.00'	40.08'	79.92'	N 17 01'17"W
30	14 45'06"	365.45'	94.09'	47.31'	93.83'	N 28 45'06"W
58	08 03'10"	415.45'	58.39'	29.24'	58.34'	S 25 24'10"E
59	04 58'17"	576.25'	50.00'	25.02'	49.98'	S 18 53'27"E
60	10 26'24"	576.25'	105.00'	52.65'	104.85'	S 11 11'06"E
61	13 05'19"	576.25'	131.64'	66.11'	131.35'	S 00 34'45"W
62	90 00'00"	25.00'	39.27'	25.00'	35.36'	S 37 52'35"E
63	03 11'27"	1490.38'	83.00'	41.51'	82.99'	S 81 16'52"E
64	02 53'00"	1490.38'	75.00'	37.51'	74.99'	S 78 14'39"E
65A	05 49'31"	1692.77'	172.10'	86.12'	172.03'	N 22 23'05"E
65B	88 06'53"	25.00'	38.45'	24.19'	34.77'	N 63 31'47"E
65C	04 23'22"	1490.38'	114.18'	57.12'	114.15'	S 74 35'28"E

Well Lot	DELTA	RADIUS	LENGTH	TANGENT	CHORD	CHORD BEARING
A	02 25'44"	1117.63'	47.38'	23.69'	47.38'	N 26 21'04"E
B	02 16'06"	1692.77'	67.02'	33.51'	67.01'	N 26 25'54"E



PHASE II  
REMAINING PROPERTY OF TASKINAS EST.

1871430

2 of 2



THE DEYOUNG-JOHNSON GROUP, INC.  
ENGINEERS · ARCHITECTS · SURVEYORS  
P.O. BOX 197 WILLIAMSBURG, VIRGINIA 23187 (804) 253-0673

11:02 AM.  
16th June 1988  
[Signature]

PHASE I  
**WARE CREEK MANOR**  
OWNER / DEVELOPER:  
TASKINAS ESTATES, A VIRGINIA LIMITED PARTNERSHIP  
JAMES CITY COUNTY VIRGINIA

DATE JAN. 27, 1988    DESIGNED PF    DRAWN T.C.S.    CHECKED L.D.E.

