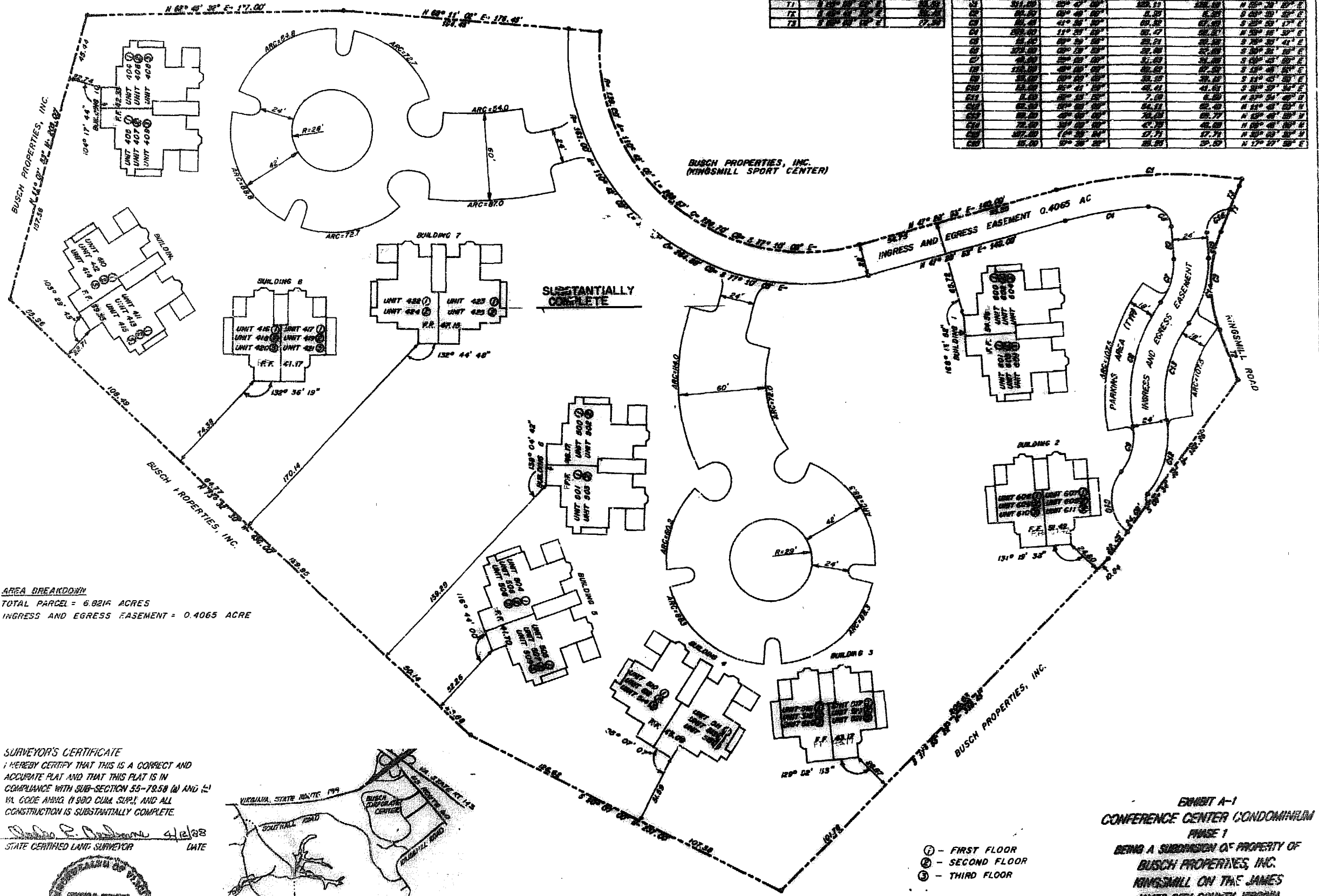


BUSCH PROPERTIES, INC. (KINGSMILL CONFERENCE CENTER)

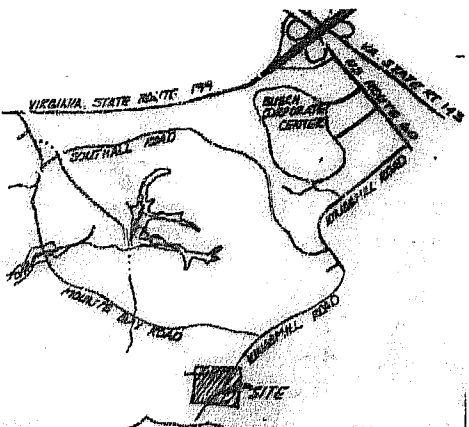
LINE	BEARING	DISTANCE
T1	N 88° 45' 32" E	177.00
T2	N 62° 11' 02" E	178.48
T3	S 88° 45' 32" W	177.00

LINE	BEARING	DISTANCE	ARC LENGTH	CHORD LENGTH	CHORD BEARING
C1	N 88° 45' 32" E	177.00	208.13	208.13	N 88° 45' 32" E
C2	N 62° 11' 02" E	178.48	210.13	210.13	N 62° 11' 02" E
C3	S 88° 45' 32" W	177.00	208.13	208.13	S 88° 45' 32" W
C4	S 62° 11' 02" W	178.48	210.13	210.13	S 62° 11' 02" W
C5	N 88° 45' 32" E	177.00	208.13	208.13	N 88° 45' 32" E
C6	N 62° 11' 02" E	178.48	210.13	210.13	N 62° 11' 02" E
C7	S 88° 45' 32" W	177.00	208.13	208.13	S 88° 45' 32" W
C8	S 62° 11' 02" W	178.48	210.13	210.13	S 62° 11' 02" W
C9	N 88° 45' 32" E	177.00	208.13	208.13	N 88° 45' 32" E
C10	N 62° 11' 02" E	178.48	210.13	210.13	N 62° 11' 02" E
C11	S 88° 45' 32" W	177.00	208.13	208.13	S 88° 45' 32" W
C12	S 62° 11' 02" W	178.48	210.13	210.13	S 62° 11' 02" W
C13	N 88° 45' 32" E	177.00	208.13	208.13	N 88° 45' 32" E
C14	N 62° 11' 02" E	178.48	210.13	210.13	N 62° 11' 02" E
C15	S 88° 45' 32" W	177.00	208.13	208.13	S 88° 45' 32" W
C16	S 62° 11' 02" W	178.48	210.13	210.13	S 62° 11' 02" W
C17	N 88° 45' 32" E	177.00	208.13	208.13	N 88° 45' 32" E
C18	N 62° 11' 02" E	178.48	210.13	210.13	N 62° 11' 02" E
C19	S 88° 45' 32" W	177.00	208.13	208.13	S 88° 45' 32" W
C20	S 62° 11' 02" W	178.48	210.13	210.13	S 62° 11' 02" W



AREA BREAKDOWN
 TOTAL PARCEL = 6.8216 ACRES
 INGRESS AND EGRESS EASEMENT = 0.4065 ACRE

SURVEYOR'S CERTIFICATE
 I HEREBY CERTIFY THAT THIS IS A CORRECT AND ACCURATE PLAT AND THAT THIS PLAT IS IN COMPLIANCE WITH SUB-SECTION 55-79.58 (A) AND (C) VA CODE ANNO (1990 CUM SUP.) AND ALL CONSTRUCTION IS SUBSTANTIALLY COMPLETE.
 [Signature] 4/12/88
 STATE CERTIFIED LAND SURVEYOR DATE



- ① - FIRST FLOOR
- ② - SECOND FLOOR
- ③ - THIRD FLOOR

EXHIBIT A-1
 CONFERENCE CENTER CONDOMINIUM
 PHASE I
 BEING A SUBDIVISION OF PROPERTY OF
 BUSCH PROPERTIES, INC.
 KINGSMILL ON THE JAMES
 JAMES CITY COUNTY, VIRGINIA
 SCALE 1"=40' DATE 4/11/88
 Langley and McDonald, P.C.
 VIRGINIA BEACH AND WILLIAMSBURG, VIRGINIA
 SHEET 1 OF 39

x 230A W
 PLAT