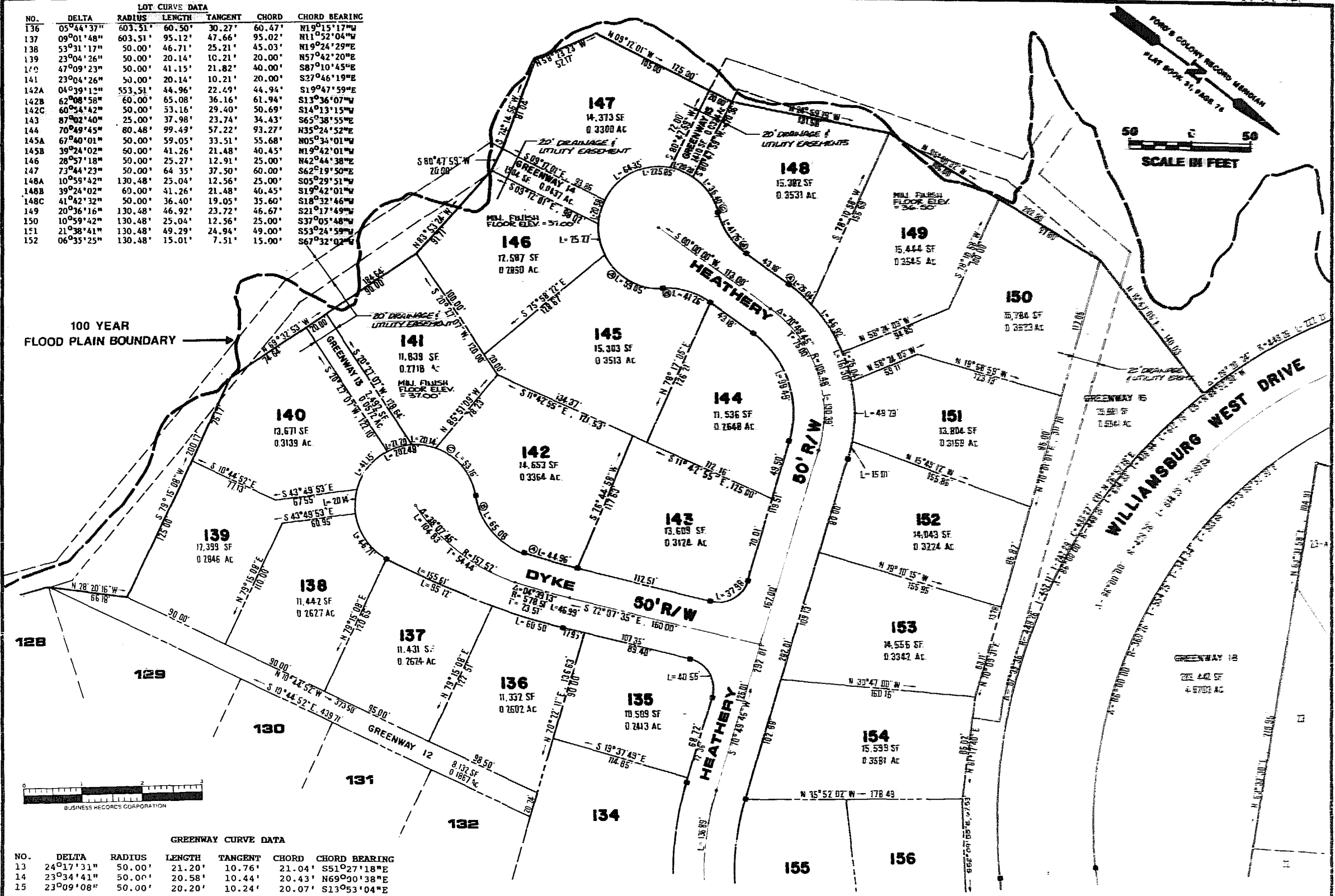


LOT CURVE DATA						
NO.	DELTA	RADIUS	LENGTH	TANGENT	CHORD	CHORD BEARING
136	05°44'37"	603.51'	60.50'	30.27'	60.47'	N19°15'17"W
137	09°01'48"	603.51'	95.12'	47.66'	95.02'	N11°52'04"W
138	53°31'17"	50.00'	46.71'	25.21'	45.03'	N19°24'29"E
139	23°04'26"	50.00'	20.14'	10.21'	20.00'	N57°42'20"E
140	47°09'23"	50.00'	41.15'	21.82'	40.00'	S87°10'45"E
141	23°04'26"	50.00'	20.14'	10.21'	20.00'	S27°46'19"E
142A	04°09'12"	553.51'	44.96'	22.49'	44.94'	S19°47'59"E
142B	62°08'58"	60.00'	65.08'	36.16'	61.94'	S13°36'07"W
142C	60°54'42"	50.00'	53.16'	29.40'	50.69'	S14°13'15"W
143	87°02'40"	25.00'	37.98'	23.74'	34.43'	S65°38'55"E
144	70°49'45"	80.48'	99.49'	57.22'	93.27'	N35°24'52"E
145A	67°40'01"	50.00'	59.05'	33.51'	55.68'	N05°34'01"W
145B	39°24'02"	60.00'	41.26'	21.48'	40.45'	N19°42'01"W
146	28°57'18"	50.00'	25.27'	12.91'	25.00'	N42°44'38"E
147	73°44'23"	50.00'	64.35'	37.50'	60.00'	S62°19'50"E
148A	10°59'42"	130.48'	25.04'	12.56'	25.00'	S05°29'51"W
148B	39°24'02"	60.00'	41.26'	21.48'	40.45'	S19°42'01"W
148C	41°42'32"	50.00'	36.40'	19.05'	35.60'	S18°32'46"W
149	20°36'16"	130.48'	46.92'	23.72'	46.67'	S21°17'49"W
150	10°59'42"	130.48'	25.04'	12.56'	25.00'	S37°05'48"W
151	21°38'41"	130.48'	49.29'	24.94'	49.00'	S53°24'59"W
152	06°35'25"	130.48'	15.01'	7.51'	15.00'	S67°32'02"W

100 YEAR FLOOD PLAIN BOUNDARY



GREENWAY CURVE DATA						
NO.	DELTA	RADIUS	LENGTH	TANGENT	CHORD	CHORD BEARING
13	24°17'31"	50.00'	21.20'	10.76'	21.04'	S51°27'18"E
14	23°03'41"	50.00'	20.58'	10.44'	20.43'	N69°00'38"E
15	23°09'08"	50.00'	20.20'	10.24'	20.07'	S13°53'04"E

MATCH SHEET 8

THIS SHEET ADDRESSES LOTS 135-154.

NO.	DATE	REVISION / COMMENT / NOTE	BY



**AES**, a professional corporation  
 1761 Jamestown Road  
 Williamsburg, Va. 23185  
 804-253-0040  
 Engineering, Planning, Surveying



PLAT OF  
**FORD'S COLONY AT WILLIAMSBURG**  
 SECTION XI-A  
 LOT 70 TO LOT 156

BERKELEY DISTRICT      JAMES CITY COUNTY      VIRGINIA

Designed AES/LCA	Drawn AES
Scale 1" = 50'	Date JAN 1983
Project No. 5652	
Drawing No. 7 of 8	