

LOTS CURVE TABLE

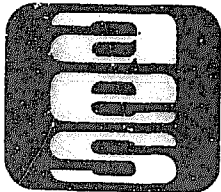
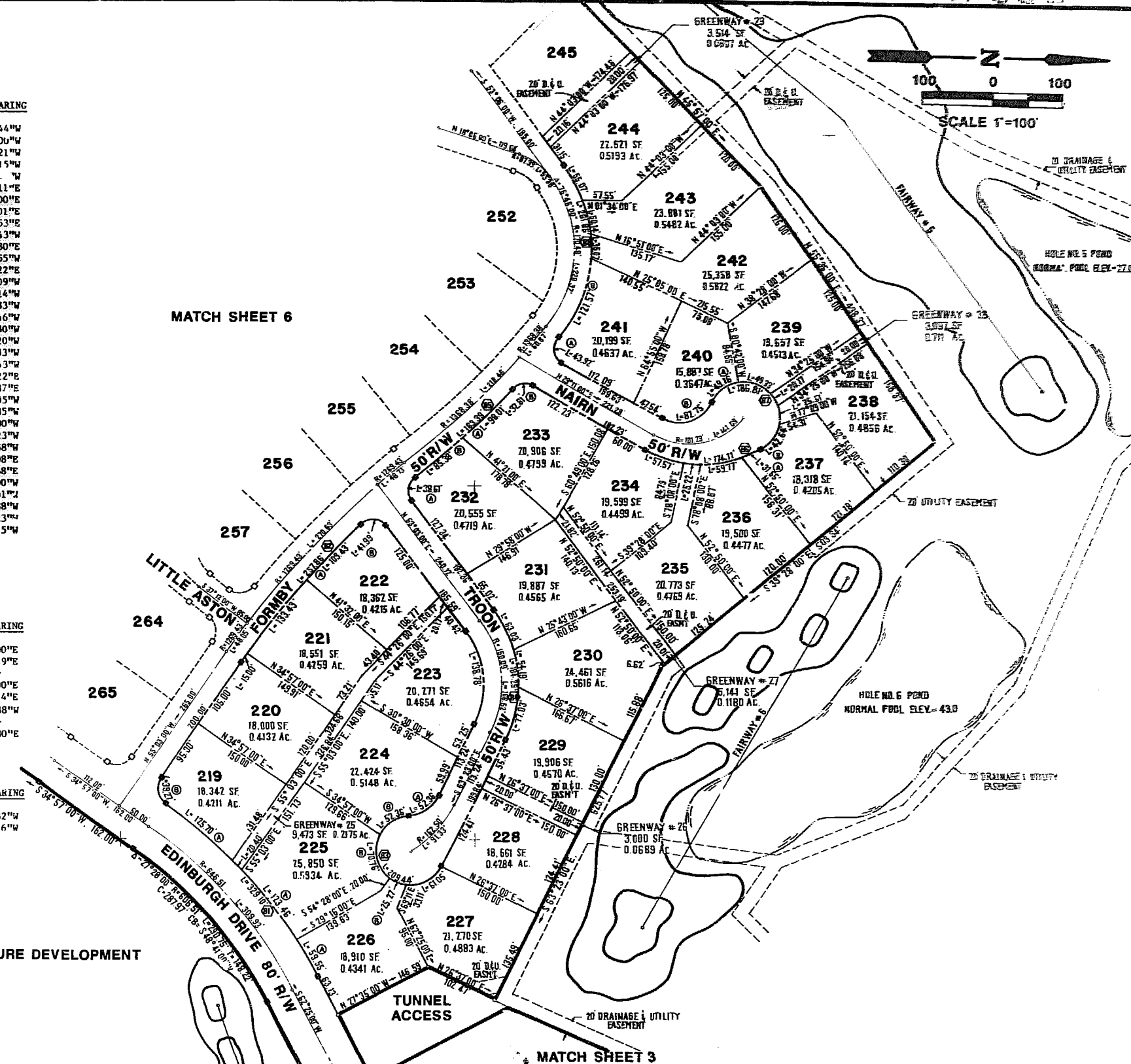
LOT NO.	DELTA	RADIUS	LENGTH	TANGENT	CHORD	CHORD BEARING
219A	10°29'28"	686.51'	125.70'	63.03'	125.53'	S40°11'44"W
219B	90°00'09"	25.00'	39.27'	25.00'	35.36'	S79°57'00"W
220	00°41'26"	1244.43'	15.00'	7.50'	15.00'	N54°42'21"W
221	06°08'36"	1244.43'	133.43'	66.78'	133.37'	N51°17'15"W
222A	05°02'19"	1244.43'	109.43'	54.75'	109.40'	N45°00'00"W
222B	96°13'38"	25.00'	41.99'	27.88'	37.22'	N04°05'11"E
223	63°34'01"	125.09'	138.78'	77.51'	131.77'	N84°50'00"E
224A	59°59'57"	50.00'	52.36'	28.87'	50.00'	S33°23'01"E
224B	59°59'57"	50.00'	52.36'	28.87'	50.00'	S33°22'53"E
225A	10°18'13"	686.51'	123.46'	61.90'	123.29'	S52°17'43"W
225B	81°05'00"	50.00'	70.76'	42.77'	65.00'	N76°04'30"E
226A	04°58'11"	686.51'	59.55'	29.79'	59.53'	S59°55'55"W
226B	28°57'17"	50.00'	25.27'	12.91'	25.00'	N21°03'22"E
227	69°57'43"	50.00'	61.05'	34.99'	57.33'	N28°24'09"W
229	25°12'26"	175.09'	77.03'	39.15'	76.41'	N75°59'14"W
230	17°44'03"	175.09'	54.19'	27.32'	53.98'	S82°32'33"W
231	20°37'31"	175.09'	63.03'	31.86'	62.69'	S63°21'46"W
232A	88°29'00"	25.00'	38.61'	24.35'	34.88'	N82°42'30"W
232B	03°30'39"	1393.38'	85.38'	42.70'	85.37'	N40°13'20"W
233A	04°01'48"	1393.38'	98.01'	49.03'	97.99'	N43°59'33"W
233B	75°11'29"	25.00'	32.81'	19.25'	30.50'	N08°24'43"W
234	20°05'22"	164.20'	57.57'	29.09'	57.28'	N19°08'22"E
235	08°48'03"	164.20'	54.19'	27.32'	53.98'	N04°41'37"E
236	20°51'21"	164.20'	59.77'	30.22'	59.44'	N10°08'05"W
237A	11°00'28"	164.20'	31.55'	15.82'	31.50'	N26°03'35"W
237B	48°51'37"	50.00'	42.64'	22.71'	41.36'	N56°00'00"W
238	29°13'37"	50.00'	25.51'	13.04'	25.23'	S84°57'23"W
239	56°31'57"	50.00'	49.33'	26.88'	47.36'	S18°57'58"W
240A	56°20'17"	50.00'	49.16'	26.78'	47.21'	S37°28'08"E
240B	94°49'17"	50.00'	82.75'	54.40'	73.62'	S18°13'38"E
241A	100°40'00"	25.00'	43.92'	30.15'	38.49'	S79°31'00"W
241B	35°38'01"	195.48'	121.57'	62.83'	119.62'	N67°58'01"E
242	10°16'43"	195.48'	35.07'	17.58'	35.02'	S89°04'38"W
243	14°41'48"	195.48'	50.14'	25.21'	50.00'	S76°35'23"W
244	16°08'29"	195.48'	55.07'	27.72'	54.89'	S61°10'15"W

R/W CURVE TABLE

CURVE NO.	DELTA	RADIUS	LENGTH	TANGENT	CHORD	CHORD BEARING
81	27°28'00"	686.51'	329.10'	167.78'	325.96'	N48°41'00"E
82	11°52'21"	1244.43'	257.87'	129.40'	257.40'	S49°06'49"E
83	239°59'57"	50.00'	209.44'	---	---	---
84	63°34'01"	175.09'	194.25'	108.49'	184.44'	N84°50'00"E
85	09°32'28"	1393.38'	183.39'	91.83'	183.26'	S42°14'14"E
86	49°44'46"	164.20'	142.56'	76.13'	138.13'	S04°18'38"W
87	214°04'04"	50.00'	186.81'	---	---	---
88	76°45'00"	195.48'	261.85'	154.80'	242.71'	S88°31'30"E

GREENWAY CURVE TABLE

GRNWY NO.	DELTA	RADIUS	LENGTH	TANGENT	CHORD	CHORD BEARING
25	01°42'09"	686.51'	20.40'	10.20'	20.40'	S46°17'32"W
28	23°06'38"	50.00'	70.17'	10.22'	20.03'	S58°47'16"W



**AES**, a professional corporation  
 1761 Jamestown Road, Williamsburg, Va. 23185  
 804-253-0040  
 Engineering, Planning, Surveying

**PLAT OF**  
**FORD'S COLONY**  
**@ WILLIAMSBURG**  
**SECTION VI**  
**LOT 219 TO LOT 244**

BERKELEY DISTRICT      JAMES CITY COUNTY      VIRGINIA



NO.	DATE	REVISION / COMMENT / NOTE	BY

Designed	Drawn
LCA/AES	SS
Scale	Date
1"=100'	SEP 23, 2007
Project No.	5652
Drawing No.	5 of 6

219+1  
 R-63