

LOT CURVE TABLE

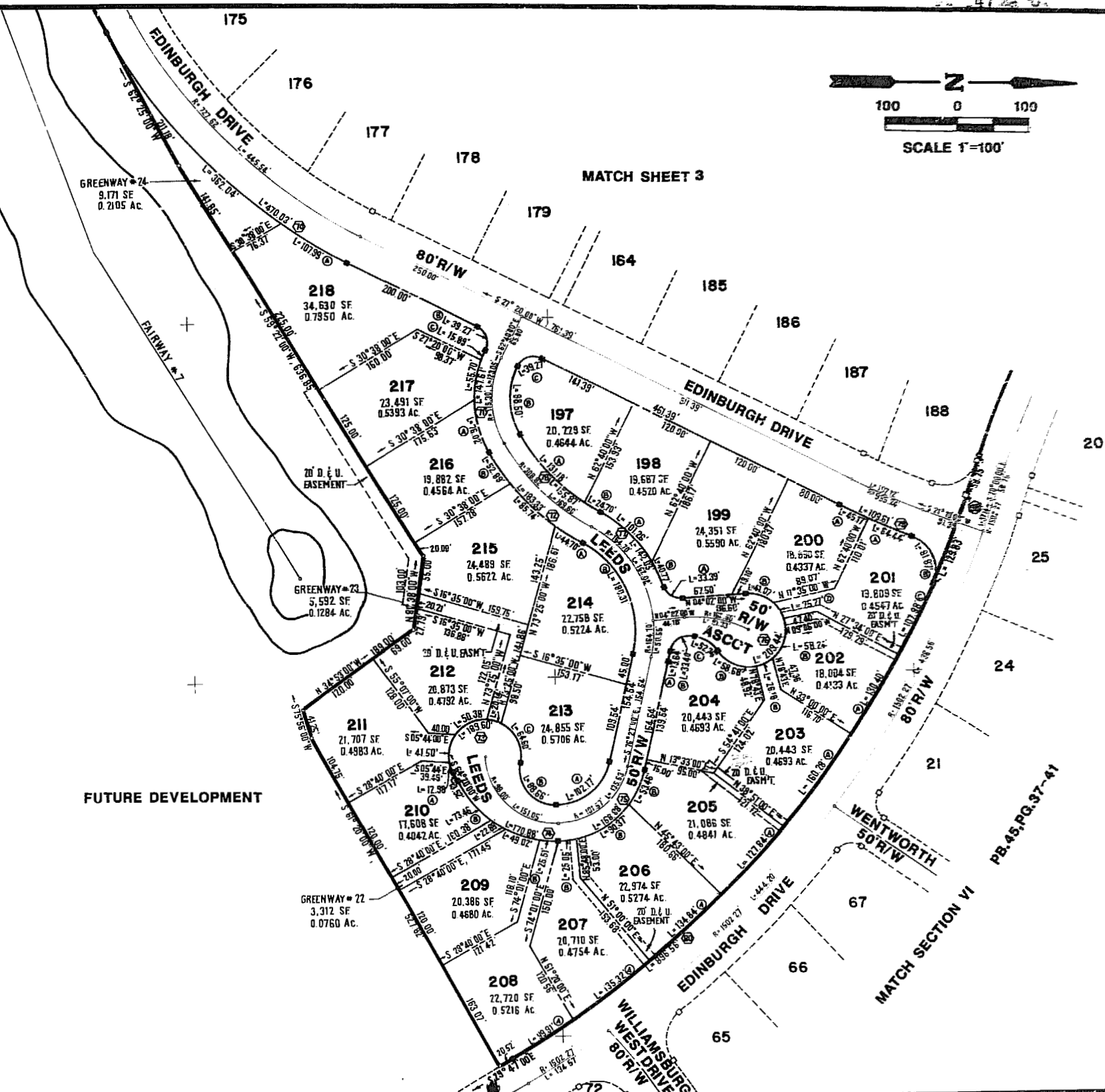
LOT NO.	DELTA	RADIUS	LENGTH	TANGENT	CHORD	CHORD BEARING
197A	26°28'54"	283.82'	131.18'	66.78'	130.02'	S47°49'33"W
197B	56°16'07"	100.30'	98.50'	53.63'	94.59'	S89°12'00"W
197C	90°00'00"	25.00'	39.27'	25.00'	35.36'	N17°40'00"W
198A	30°35'00"	189.70'	101.26'	51.87'	100.06'	S44°53'30"W
198B	04°59'07"	283.82'	24.70'	12.36'	24.69'	S32°05'36"W
199A	76°31'54"	25.00'	33.39'	19.72'	30.97'	S34°13'57"W
199B	12°18'54"	189.70'	40.77'	20.47'	40.70'	S66°20'11"W
200A	02°30'07"	1035.24'	45.17'	22.59'	45.17'	N26°05'00"E
200B	47°03'30"	50.00'	41.07'	21.77'	39.92'	S19°25'45"W
201A	03°13'59"	1035.24'	64.44'	32.23'	64.43'	N23°03'06"E
201B	93°49'13"	50.00'	81.87'	53.45'	73.03'	N68°10'37"E
201C	04°13'52"	1462.27'	107.98'	54.02'	107.96'	S62°47'51"E
201D	28°57'30"	50.00'	25.27'	12.91'	25.00'	S57°30'13"W
202A	05°06'34"	1462.27'	130.46'	65.24'	130.36'	S58°57'38"E
202B	66°44'00"	50.00'	58.24'	32.93'	55.00'	N74°38'00"W
203A	06°16'49"	1462.27'	160.28'	80.22'	160.20'	S52°23'57"E
203B	30°00'00"	50.00'	26.18'	13.40'	25.88'	N66°17'00"W
204A	04°07'58"	189.70'	13.64'	6.82'	13.64'	N78°31'05"W
204B	76°32'06"	25.00'	33.40'	19.72'	30.97'	N43°18'03"W
204C	59°59'57"	50.00'	52.36'	28.87'	50.00'	N23°37'59"E
204D	67°14'57"	50.00'	58.68'	33.25'	55.37'	N27°30'36"E
205A	05°00'32"	1462.27'	127.84'	63.96'	127.79'	S46°47'16"E
205B	24°12'07"	126.57'	53.46'	27.14'	53.07'	N64°20'38"W
206A	05°17'00"	1462.27'	134.84'	67.47'	134.79'	S41°39'30"E
206B	40°54'37"	126.57'	90.37'	47.21'	88.47'	N31°47'36"W
207A	05°18'07"	1462.27'	135.32'	67.71'	135.27'	S36°20'56"E
207B	11°20'18"	126.57'	25.05'	12.57'	25.01'	N05°40'12"W
208A	03°54'53"	1462.27'	99.91'	49.91'	99.89'	S31°44'26"E
208B	09°36'19"	152.19'	25.51'	12.79'	25.48'	N04°48'09"E
209	18°27'14"	152.19'	49.02'	24.72'	48.81'	N18°19'56"E
210A	14°52'28"	50.00'	12.98'	6.53'	12.94'	N71°46'14"E
210B	27°39'26"	152.19'	73.46'	37.46'	72.75'	N30°30'14"E
211	47°33'37"	50.00'	41.50'	22.03'	40.32'	S77°00'43"E
212	57°43'47"	50.00'	30.38'	27.56'	48.27'	S24°22'01"E
213A	76°27'03"	76.57'	102.17'	60.31'	94.76'	S38°13'31"E
213B	101°36'02"	50.00'	88.66'	61.31'	77.50'	S50°48'01"E
213C	76°01'40"	50.00'	64.60'	37.70'	60.20'	S64°35'11"W
214A	07°40'22"	333.82'	44.70'	22.39'	44.67'	N33°26'10"E
214B	73°57'04"	139.70'	130.31'	105.18'	168.05'	N66°34'30"E
215	14°42'57"	333.82'	85.74'	43.11'	85.50'	N44°37'50"E
216A	28°58'43"	150.30'	76.02'	38.84'	75.21'	N75°33'21"E
216B	09°04'42"	333.82'	52.89'	26.50'	52.84'	N56°31'39"E
217	21°13'56"	150.30'	55.70'	28.17'	55.38'	S79°20'25"E
218A	08°03'37"	767.62'	107.99'	54.08'	107.90'	N31°21'49"E
218B	90°00'00"	25.00'	39.27'	25.00'	35.36'	N72°20'00"E
218C	06°03'27"	150.30'	15.89'	7.95'	15.88'	S65°41'43"E

R/W CURVE TABLE

CURVE NO.	DELTA	RADIUS	LENGTH	TANGENT	CHORD	CHORD BEARING
70	35°05'00"	767.62'	470.03'	242.64'	462.72'	S44°52'30"W
71	56°16'06"	150.30'	147.61'	80.37'	141.75'	S89°12'00"W
72	31°28'00"	333.82'	183.33'	94.04'	181.04'	S45°19'59"W
73	21°16'02"	50.00'	169.60'	—	—	—
74	64°19'50"	152.19'	170.88'	95.71'	162.04'	S32°09'58"W
75	76°27'02"	126.57'	168.88'	99.69'	156.63'	S38°13'31"E
76	23°59'57"	50.00'	209.44'	—	—	—
77	42°53'54"	189.70'	142.03'	74.53'	138.74'	N51°02'53"E
78	31°28'01"	283.82'	155.87'	79.96'	153.92'	N45°20'00"E
79	06°03'59"	1035.24'	109.61'	54.86'	109.56'	S24°18'04"W
80	35°07'47"	1462.27'	896.56'	462.87'	882.58'	N47°20'53"W
88	05°05'13"	1462.27'	129.83'	64.96'	129.78'	S67°27'24"E

GREENWAYS CURVE TABLE

GRNWAY NO.	DELTA	RADIUS	LENGTH	TANGENT	CHORD	CHORD BEARING
22	08°36'51"	152.19'	22.88'	11.46'	22.86'	N32°21'58"E
23	23°04'30"	50.00'	20.14'	10.21'	20.00'	S16°02'07"W
24	27°01'23"	767.62'	362.04'	184.45'	358.70'	N48°54'18"E



AES, a professional corporation
 1761 Jamestown Road, Williamsburg, Va. 23185
 804-253-0040
 Engineering, Planning, Surveying

PLAT OF
FORD'S COLONY
 @ **WILLIAMSBURG**
 SECTION VI
 LOT 197 TO LOT 218

BERKELEY DISTRICT JAMES CITY COUNTY VIRGINIA



No.	DATE	REVISION / COMMENT / NOTE	BY

Designed LCA/AES	DRAWN SS
Scale 1"=100'	DATE MAY 20, 1987
Project No. 5652	
Drawing No. 4 of 6	

PB 47
PB 62