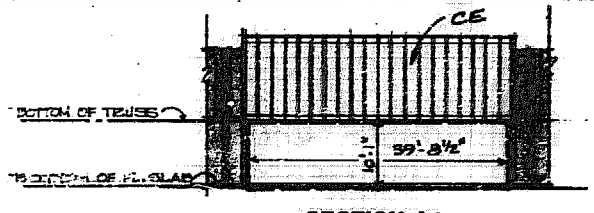
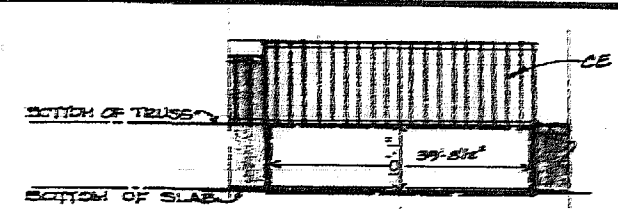


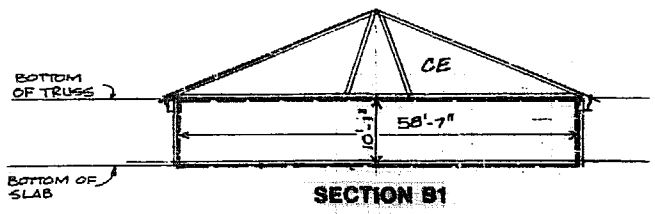
SECTION A1



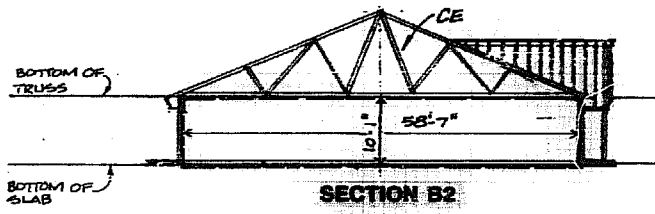
SECTION A1



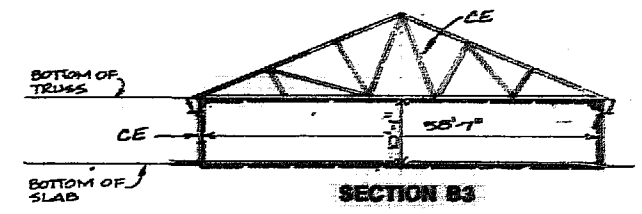
SECTION A1



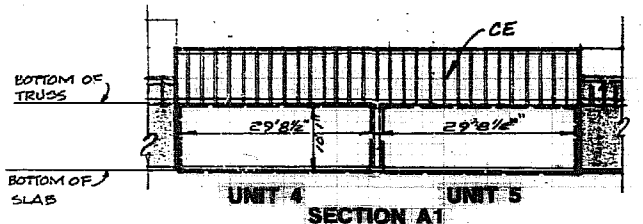
SECTION B1  
UNIT 1



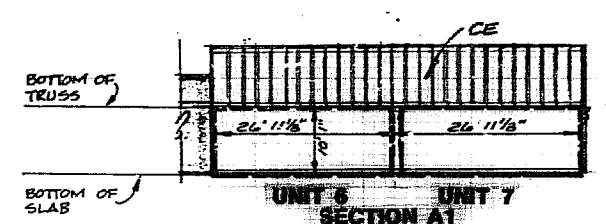
SECTION B2  
UNIT 2



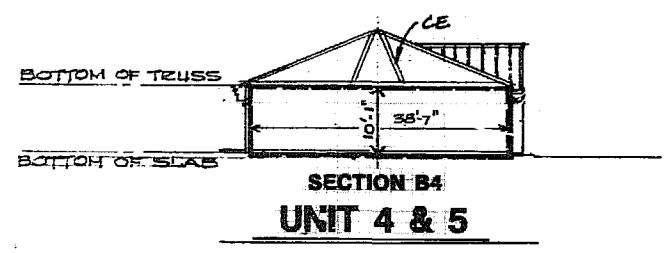
SECTION B3  
UNIT 3



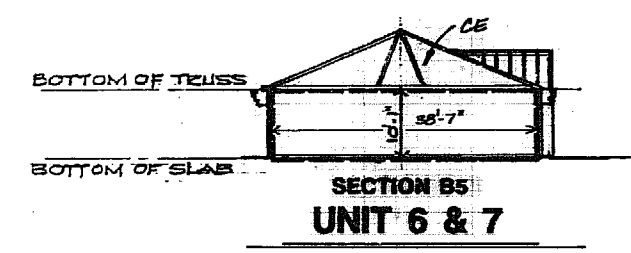
SECTION A1  
UNIT 4 UNIT 5



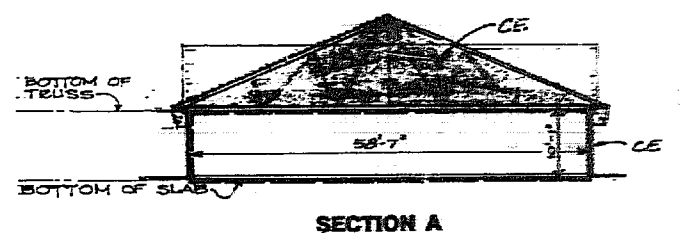
SECTION A1  
UNIT 6 UNIT 7



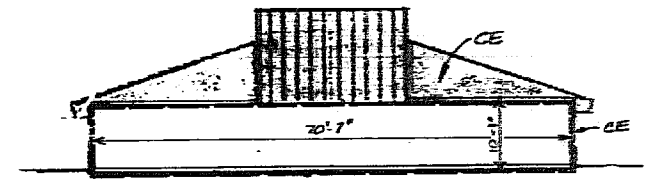
SECTION B4  
UNIT 4 & 5



SECTION B5  
UNIT 6 & 7



SECTION A



SECTION B

UNIT 8

**UNITS 1 THRU 7**

1/16"=1'-0"

UNIT	LOWER BOUNDARY (ft)	UPPER BOUNDARY (ft)	AREA (ft <sup>2</sup> )	VOLUME (ft <sup>3</sup> )
1	97.67	107.75	2270	22882
2	97.67	107.75	2326	23456
3	97.67	107.75	2303	23225
4	97.67	107.75	1146	11558
5	97.67	107.75	1146	11558
6	97.67	107.75	1039	10476
7	97.67	107.75	1039	10476
8	98.17	108.25	4115	41489

Note: Upper Boundary of all units is the lower surface of the Truss-Joists in the ceiling. The numerical values given as upper boundary is the elevation of the line of truss bearing.

--- Denotes Boundary of Condominium

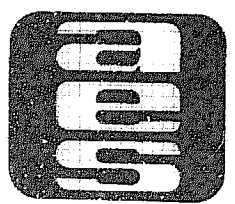
**Architects' Certificate**

I hereby certify that this is a correct and accurate Plan, that this Plan is in compliance with the Condominium Act, Title 55, Chapter 42, Sections 55-79 through 55-79.03 of the Code of Virginia of 1950, as amended.

*Harry S. Cruickshank*  
Harry S. Cruickshank, A.T.A.

14 Jan 1988  
Date

**EXHIBIT B  
VERTICAL BOUNDARIES**



**AES**, a professional corporation  
1761 Jamestown Road, Williamsburg, Va. 23185  
804-253-0040  
Engineering, Planning, Surveying

PLAT OF  
**KRISTIANSAND OFFICE PARK**  
(A CONDOMINIUM)  
JAMES CITY COUNTY VIRGINIA

No.	DATE	REVISION / COMMENT / NOTE	BY

Designed: *[Signature]* Date: *[Date]*  
Scale: *[Scale]* Date: *[Date]*  
Notes: *[Notes]*  
Project No. **6661**  
Drawing No. **3 of 3**