

NOTE: 1. THE AREA SURROUNDING BLDGS 7, 8, 9 IS WOODED W/ MIXED PINES & HARDWOODS OF VARYING DIAMETERS.

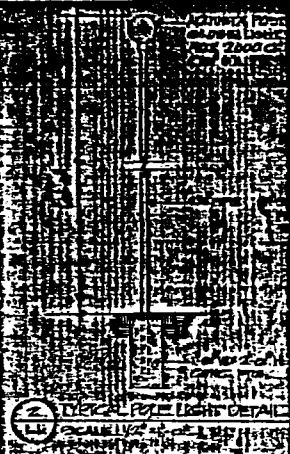
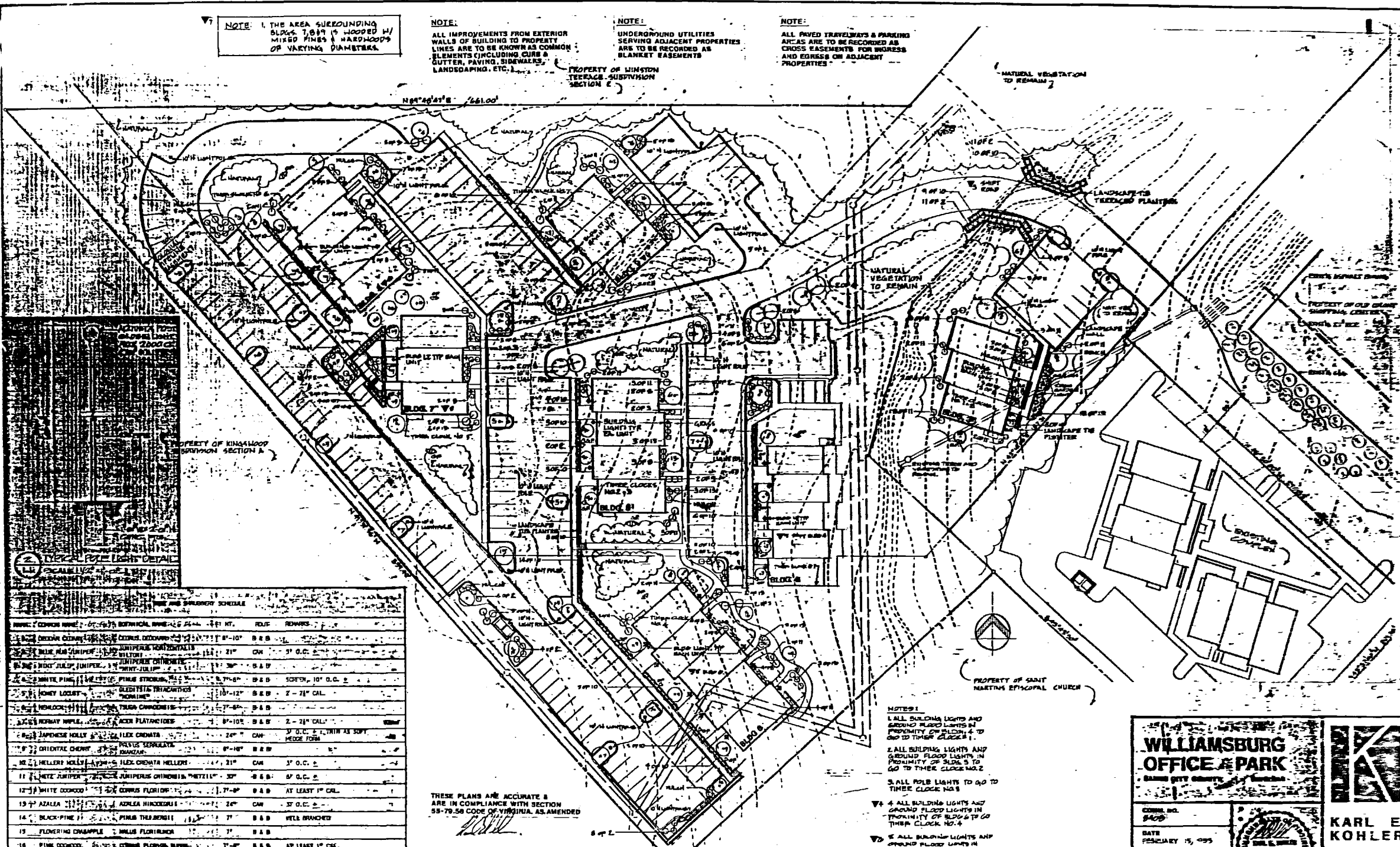
NOTE: ALL IMPROVEMENTS FROM EXTERIOR WALLS OF BUILDING TO PROPERTY LINES ARE TO BE KNOWN AS COMMON ELEMENTS (INCLUDING CURBS & GUTTER, PAVING, SIDEWALKS, LANDSCAPING, ETC.).

NOTE: UNDERGROUND UTILITIES SERVING ADJACENT PROPERTIES ARE TO BE RECORDED AS BLANKET EASEMENTS.

NOTE: ALL PAVED TRAVELWAYS & PARKING AREAS ARE TO BE RECORDED AS CROSS EASEMENTS FOR WALKERS AND EDGES ON ADJACENT PROPERTIES.

PROPERTY OF WINSTON TERRACE SUBDIVISION SECTION 6

NATURAL VEGETATION TO REMAIN



PLANT	COMMON NAME	SCIENTIFIC NAME	HT.	COL.	REMARKS
1	DOGWOOD	DOGWOOD	8'-10'	B & B	
2	BURMA PINE	SHREVEA PALMATA	20'	CM	3" O.C. 2"
3	ORIENTAL BERRY	INDIGOSPLINA	8'-10'	B & B	
4	WAX PALM	WAX PALM	10'-12'	B & B	2-21" CAL.
5	WAX PALM	WAX PALM	10'-12'	B & B	2-21" CAL.
6	WAX PALM	WAX PALM	10'-12'	B & B	2-21" CAL.
7	WAX PALM	WAX PALM	10'-12'	B & B	2-21" CAL.
8	WAX PALM	WAX PALM	10'-12'	B & B	2-21" CAL.
9	WAX PALM	WAX PALM	10'-12'	B & B	2-21" CAL.
10	WAX PALM	WAX PALM	10'-12'	B & B	2-21" CAL.
11	WAX PALM	WAX PALM	10'-12'	B & B	2-21" CAL.
12	WAX PALM	WAX PALM	10'-12'	B & B	2-21" CAL.
13	WAX PALM	WAX PALM	10'-12'	B & B	2-21" CAL.
14	WAX PALM	WAX PALM	10'-12'	B & B	2-21" CAL.
15	WAX PALM	WAX PALM	10'-12'	B & B	2-21" CAL.
16	WAX PALM	WAX PALM	10'-12'	B & B	2-21" CAL.

THESE PLANS ARE ACCURATE & ARE IN COMPLIANCE WITH SECTION 55-79.59 CODE OF VIRGINIA, AS AMENDED

- NOTES:
1. ALL BUILDING LIGHTS AND GROUND FLOOD LIGHTS IN PROXIMITY OF BLDG 4 TO GO TO THEIR CLOCK #1.
  2. ALL BUILDING LIGHTS AND GROUND FLOOD LIGHTS IN PROXIMITY OF BLDG 5 TO GO TO THEIR CLOCK NO.2
  3. ALL FLOOD LIGHTS TO GO TO THEIR CLOCK NO.3
  4. ALL BUILDING LIGHTS AND GROUND FLOOD LIGHTS IN PROXIMITY OF BLDG 6 TO GO TO THEIR CLOCK NO.4
  5. ALL BUILDING LIGHTS AND GROUND FLOOD LIGHTS IN PROXIMITY OF BLDG 7 TO GO TO THEIR CLOCK NO.5
  6. ALL BUILDING LIGHTS AND GROUND FLOOD LIGHTS IN PROXIMITY OF BLDG 8 TO GO TO THEIR CLOCK NO.6
  7. ALL BUILDING LIGHTS AND GROUND FLOOD LIGHTS IN PROXIMITY OF BLDG 9 TO GO TO THEIR CLOCK NO.7

LANDSCAPING & LIGHTING PLAN  
SCALE: 1" = 30'-0"

**WILLIAMSBURG OFFICE & PARK**  
GAINES CITY COUNTY, VIRGINIA

DATE: FEBRUARY 15, 1995

REVISIONS:

- 1. 2/15/95
- 2. 2/15/95
- 3. 2/15/95
- 4. 2/15/95
- 5. 2/15/95

TWO SHEETS IN THE PROPERTY OF KARL E. KOHLER ASSOCIATES ARCHITECTS AND IS NOT TO BE REPRODUCED OR USED FOR ANY PROJECT, IN WHOLE OR IN PART WITHOUT THEIR EXPRESS WRITTEN PERMISSION.

**LANDSCAPING & LIGHTING PLAN**



**KARL E. KOHLER ASSOCIATES**  
AIA ARCHITECTS

1000 W. 17th Street  
Williamsburg, VA 23186

PHONE: (757) 237-2200  
FAX: (757) 237-1970

**L1**