

Δ = 94°44'40"
 R = 30.00'
 T = 52.59'
 L = 49.61'
 CB = N48°09'06"E

Δ = 29°12'00"
 R = 175.97'
 T = 202.00'
 L = 395.81'
 CB = S65°20'55"E

R/W ACQUISITION
 AREA = 5,511 SF
 = 0.1265 AC±

R/W ACQUISITION
 AREA = 708 SF
 = 0.0162 AC±

TOTAL AREA OF R/W ACQUISITION = 6,219 SF
 = 0.1428 AC±

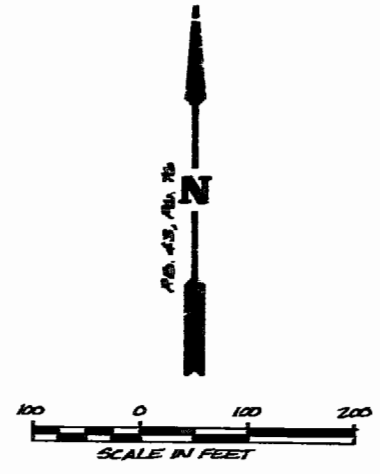
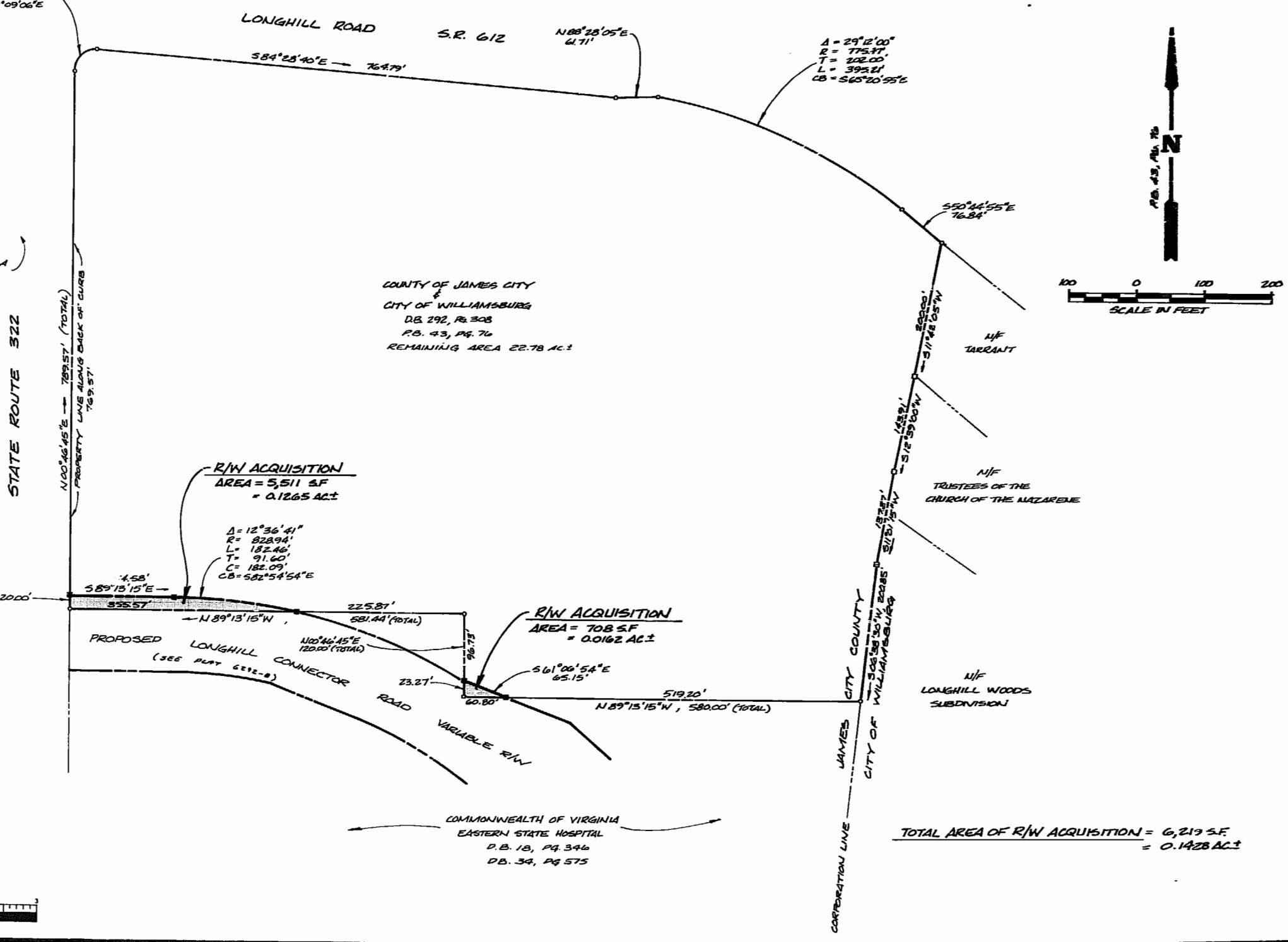
COMMONWEALTH OF VIRGINIA
 EASTERN STATE HOSPITAL
 D.B. 18, PG. 346
 D.B. 34, PG. 575

COUNTY OF JAMES CITY
 &
 CITY OF WILLIAMSBURG
 D.B. 292, PG. 308
 P.B. 43, PG. 76
 REMAINING AREA 22.78 AC±

N/F
 TARRANT

N/F
 TRUSTEES OF THE
 CHURCH OF THE NAZARENE

N/F
 LONGHILL WOODS
 SUBDIVISION



AES, a professional corporation
 1761 Jamestown Road, Williamsburg, Va. 23185
 804-253-0040
 Engineering, Planning, Surveying

PLAT FOR CONVEYANCE AND DEDICATION OF RIGHT-OF-WAY CONTAINING 0.1428 AC. FROM: COUNTY OF JAMES CITY AND CITY OF WILLIAMSBURG TO: VIRGINIA DEPARTMENT OF TRANSPORTATION
 BERKELEY DISTRICT JAMES CITY COUNTY VIRGINIA



Recorded 5/21/87	9/3/87
Scale T-100'	Date JULY 2, 1987
P.B. No. 364	No. 462
Urban Stewart Clerk	
No. DATE	REVISION / COMMENT / NOTE
	BY

Designed GAN	Drawn GSB
Project No. 6292-C	Drawing No. PLAT