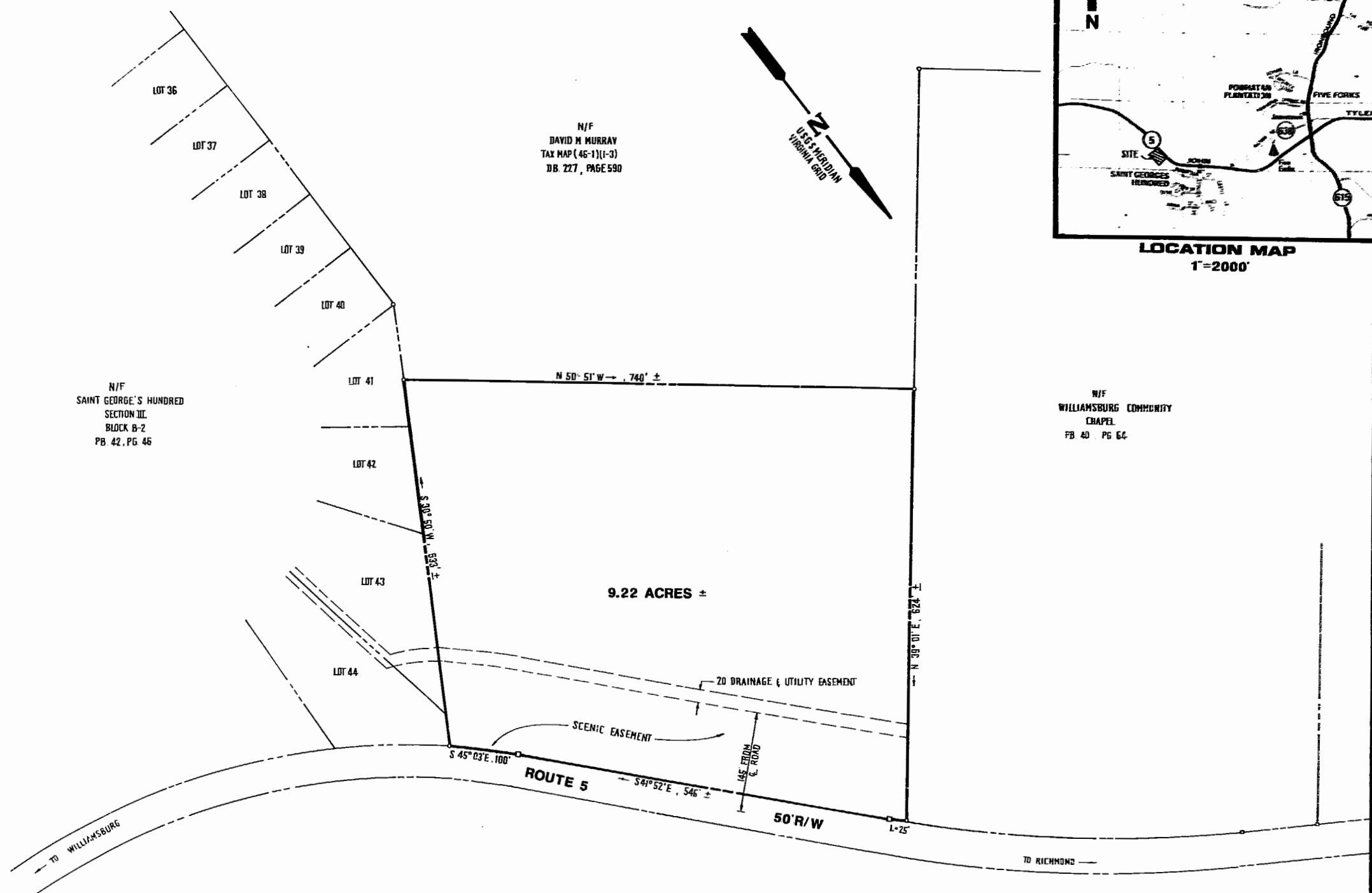


LOCATION MAP  
1"=2000'



N/F  
DAVID M MURRAY  
TAX MAP (46-1)(1-3)  
DB. 227, PAGE 590

N/F  
SAINT GEORGE'S HUNDRED  
SECTION III  
BLOCK B-2  
PB 42, PG 46

N/F  
WILLIAMSBURG COMMUNITY  
CHAPEL  
FB 40, PG 64

9.22 ACRES ±

NOTE: THIS PLAT REPRESENTS A COMPILATION  
OF EXISTING OFFICE INFORMATION AND  
DOES NOT REPRESENT AN ACTUAL FIELD  
SURVEY.

9:22am.  
Recorded 5<sup>th</sup> day of Oct. 1987  
D.B. No. 367, pages 449  
Wilma S. Ward, Clerk



**AES**, a professional corporation  
1761 Jamestown Road, Williamsburg, Va. 23185  
804-253-0040  
Engineering, Planning, Surveying

**PRELIMINARY PLAT**  
**SEVENTH DAY**  
**ADVENTIST CHURCH SITE**  
**9.22 ACRES ±**  
JAMES CITY COUNTY VIRGINIA



No.	DATE	REVISION / COMMENT / NOTE	BY

Designed	Drawn
ES	ES
Scale	Date
1"=100'	3/13/87
Project No.	
5851-A	
Drawing No.	
PLAT	