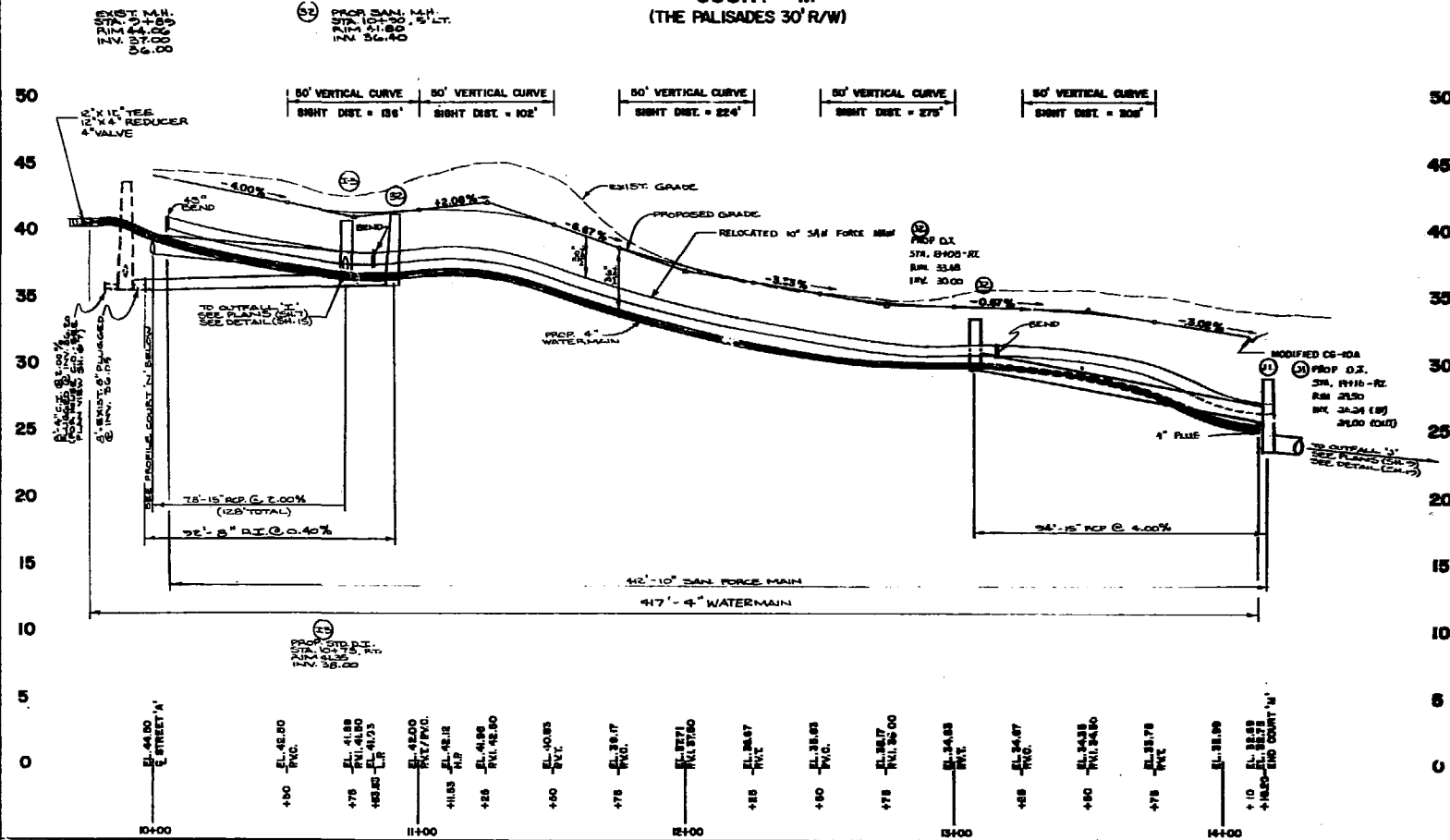
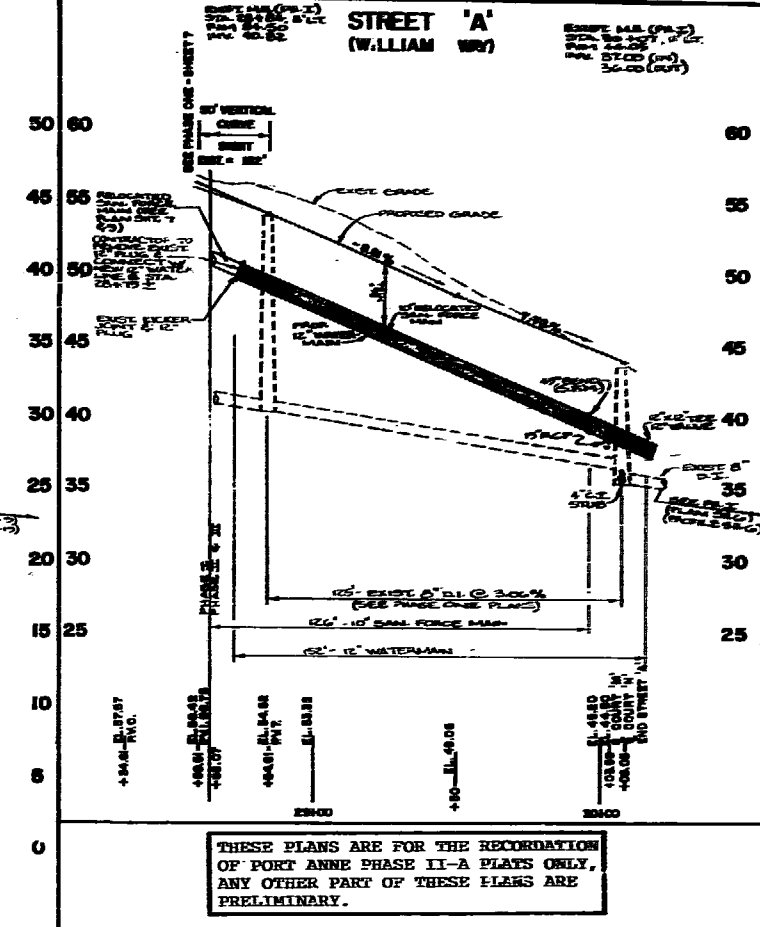


COURT 'M'
(THE PALISADES 30' R/W)

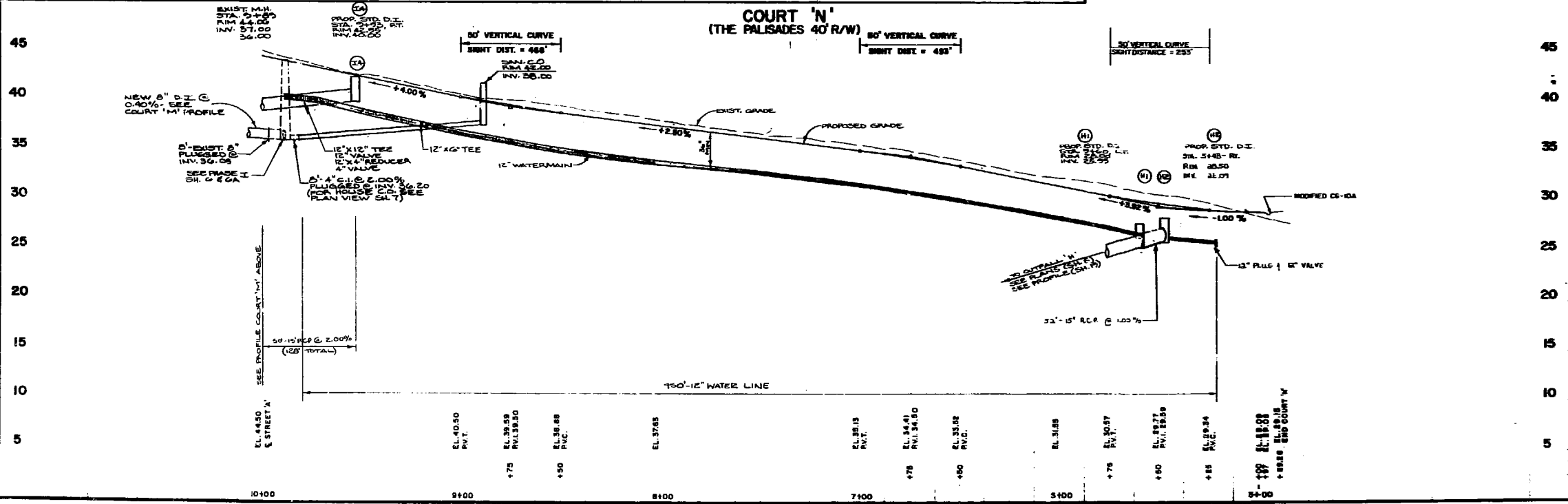


STREET 'A'
(WILLIAM ST)



THESE PLANS ARE FOR THE RECORDED OF PORT ANNE PHASE II-A PLATS ONLY. ANY OTHER PART OF THESE PLANS ARE PRELIMINARY.

COURT 'N'
(THE PALISADES 40' R/W)



Talbot & Associates Ltd.
Arlington, Virginia
Professional Seal
1111 North West Blvd., Suite 1000, Tallahassee, FL 32302

PORT ANNE
PHASE TWO THREE
WILLIAMSBURG, VIRGINIA



Designed	WCB/CPL
Drawn	E.J.G./E.A.W.
Checked	AMS
Scale	VERT. 1"=5' HORIZ. 1"=24'
Date	8/28/85
File No.	8-24019
Project No.	24019A
Sheet No.	12