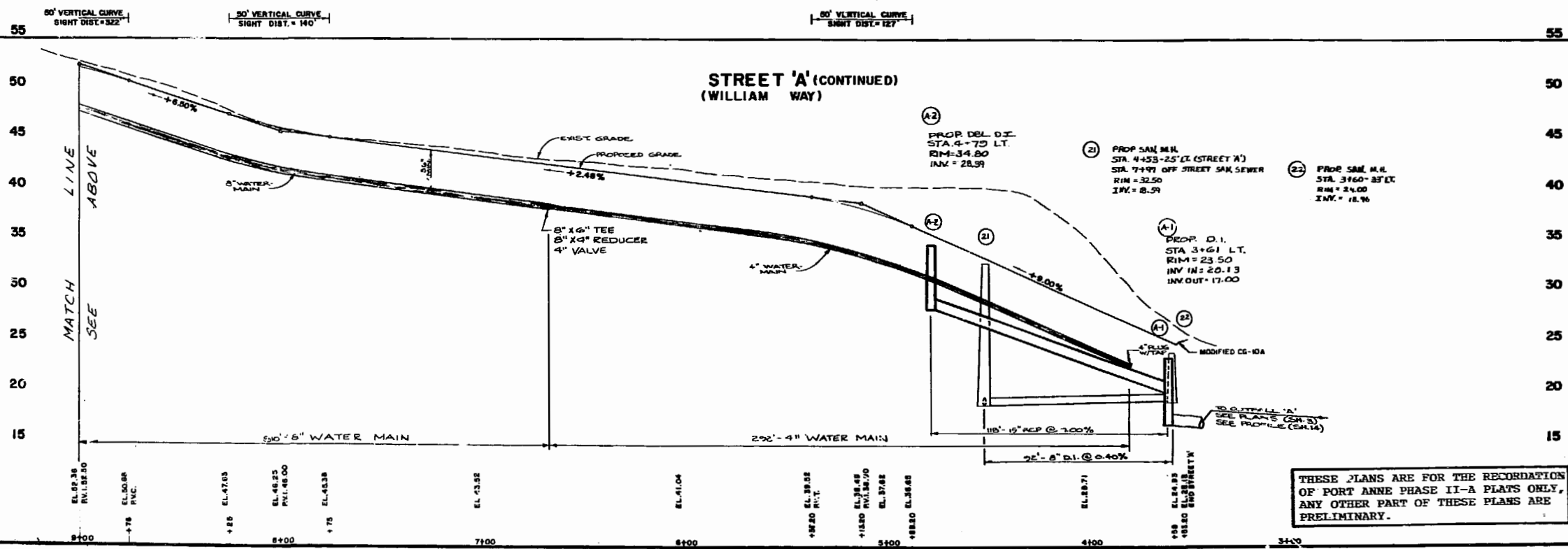
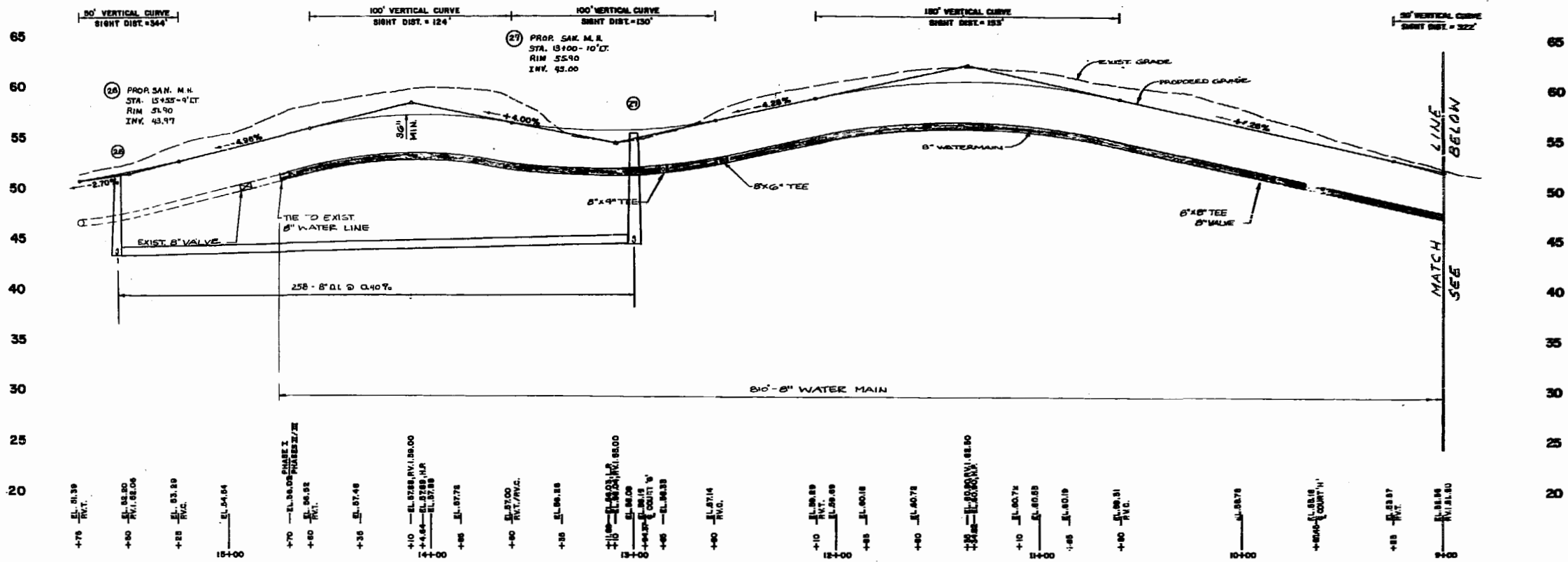


**STREET 'A'**  
(WILLIAM WAY)



**Talbot & Associates, Ltd.**  
 ARCHITECTS, ENGINEERS, SURVEYORS, PLANNERS, ENVIRONMENTALISTS  
 10000 W. 10th St., Suite 100, Westminster, CO 80234  
 303.426.1100

**STREET PROFILES FOR PORT ANNE PHASE TWO/THREE WILLIAMSBURG, VIRGINIA**

Designed WCB/CPL  
 Drawn E.A.S./E.A.W.  
 Checked ABS  
 Scale VERT. 1"=6'  
 HORIZ. 1"=20'  
 Date 9/29/88  
 File No. E-84018  
 Project No. 84018A  
 Sheet No. **10**  
 of 18 Sheets

THESE PLANS ARE FOR THE RECORDATION OF PORT ANNE PHASE II-A PLATS ONLY, ANY OTHER PART OF THESE PLANS ARE PRELIMINARY.

