

THESE PLANS ARE FOR THE RECORDECTION OF PORT ANNE PHASE 2A PLATS ONLY, ANY OTHER PART OF THESE PLANS ARE PRELIMINARY

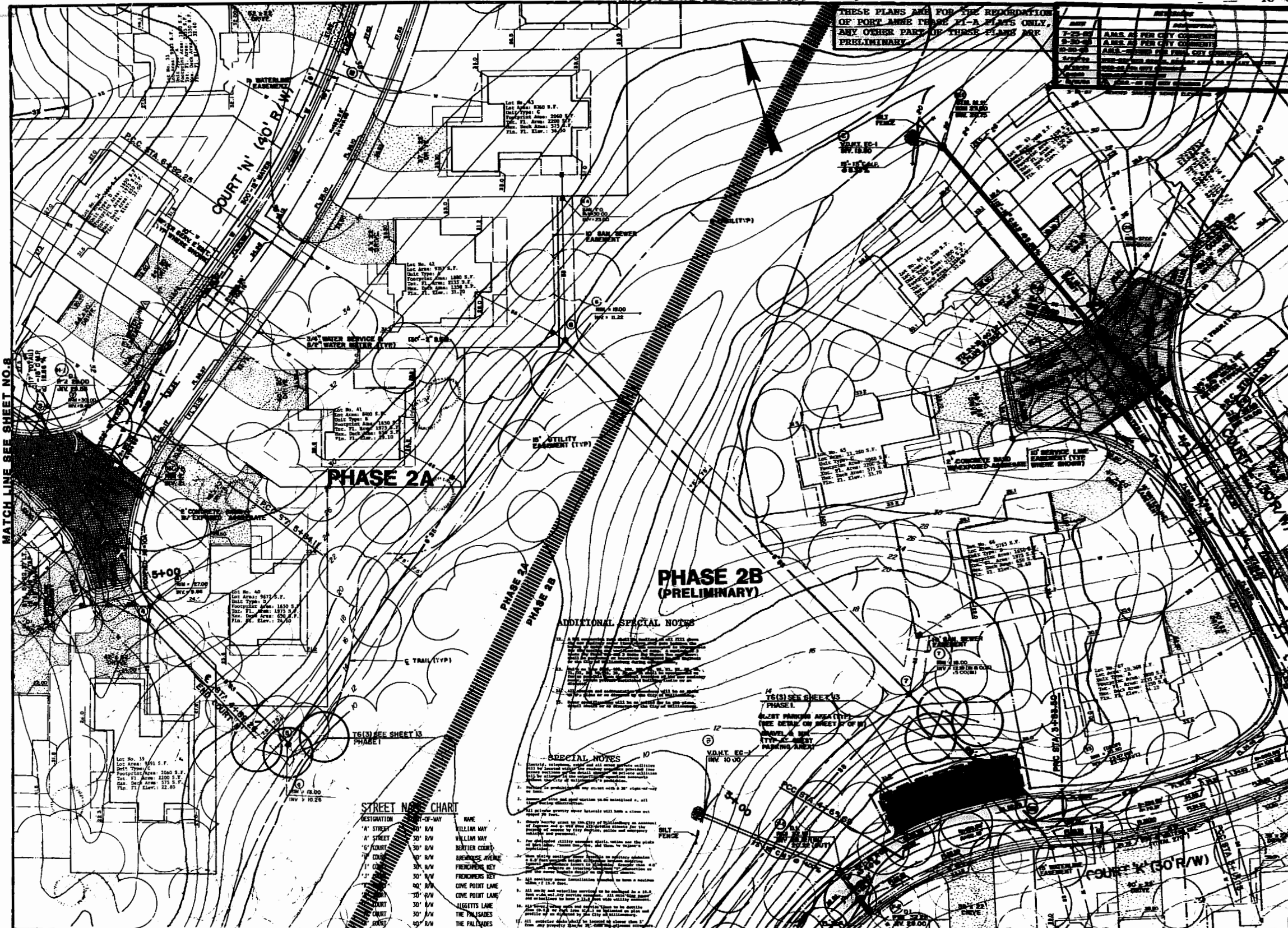
NO.	DESCRIPTION	AMOUNT	REMARKS
1	AMOUNT AS PER CITY COMMISSION		
2	AMOUNT AS PER CITY COMMISSION		
3	AMOUNT AS PER CITY COMMISSION		
4	AMOUNT AS PER CITY COMMISSION		
5	AMOUNT AS PER CITY COMMISSION		
6	AMOUNT AS PER CITY COMMISSION		
7	AMOUNT AS PER CITY COMMISSION		
8	AMOUNT AS PER CITY COMMISSION		
9	AMOUNT AS PER CITY COMMISSION		
10	AMOUNT AS PER CITY COMMISSION		
11	AMOUNT AS PER CITY COMMISSION		
12	AMOUNT AS PER CITY COMMISSION		
13	AMOUNT AS PER CITY COMMISSION		
14	AMOUNT AS PER CITY COMMISSION		
15	AMOUNT AS PER CITY COMMISSION		
16	AMOUNT AS PER CITY COMMISSION		
17	AMOUNT AS PER CITY COMMISSION		
18	AMOUNT AS PER CITY COMMISSION		
19	AMOUNT AS PER CITY COMMISSION		
20	AMOUNT AS PER CITY COMMISSION		
21	AMOUNT AS PER CITY COMMISSION		
22	AMOUNT AS PER CITY COMMISSION		
23	AMOUNT AS PER CITY COMMISSION		
24	AMOUNT AS PER CITY COMMISSION		
25	AMOUNT AS PER CITY COMMISSION		
26	AMOUNT AS PER CITY COMMISSION		
27	AMOUNT AS PER CITY COMMISSION		
28	AMOUNT AS PER CITY COMMISSION		
29	AMOUNT AS PER CITY COMMISSION		
30	AMOUNT AS PER CITY COMMISSION		
31	AMOUNT AS PER CITY COMMISSION		
32	AMOUNT AS PER CITY COMMISSION		
33	AMOUNT AS PER CITY COMMISSION		
34	AMOUNT AS PER CITY COMMISSION		
35	AMOUNT AS PER CITY COMMISSION		
36	AMOUNT AS PER CITY COMMISSION		
37	AMOUNT AS PER CITY COMMISSION		
38	AMOUNT AS PER CITY COMMISSION		
39	AMOUNT AS PER CITY COMMISSION		
40	AMOUNT AS PER CITY COMMISSION		
41	AMOUNT AS PER CITY COMMISSION		
42	AMOUNT AS PER CITY COMMISSION		
43	AMOUNT AS PER CITY COMMISSION		
44	AMOUNT AS PER CITY COMMISSION		
45	AMOUNT AS PER CITY COMMISSION		
46	AMOUNT AS PER CITY COMMISSION		
47	AMOUNT AS PER CITY COMMISSION		
48	AMOUNT AS PER CITY COMMISSION		
49	AMOUNT AS PER CITY COMMISSION		
50	AMOUNT AS PER CITY COMMISSION		
51	AMOUNT AS PER CITY COMMISSION		
52	AMOUNT AS PER CITY COMMISSION		
53	AMOUNT AS PER CITY COMMISSION		
54	AMOUNT AS PER CITY COMMISSION		
55	AMOUNT AS PER CITY COMMISSION		
56	AMOUNT AS PER CITY COMMISSION		
57	AMOUNT AS PER CITY COMMISSION		
58	AMOUNT AS PER CITY COMMISSION		
59	AMOUNT AS PER CITY COMMISSION		
60	AMOUNT AS PER CITY COMMISSION		
61	AMOUNT AS PER CITY COMMISSION		
62	AMOUNT AS PER CITY COMMISSION		
63	AMOUNT AS PER CITY COMMISSION		
64	AMOUNT AS PER CITY COMMISSION		
65	AMOUNT AS PER CITY COMMISSION		
66	AMOUNT AS PER CITY COMMISSION		
67	AMOUNT AS PER CITY COMMISSION		
68	AMOUNT AS PER CITY COMMISSION		
69	AMOUNT AS PER CITY COMMISSION		
70	AMOUNT AS PER CITY COMMISSION		
71	AMOUNT AS PER CITY COMMISSION		
72	AMOUNT AS PER CITY COMMISSION		
73	AMOUNT AS PER CITY COMMISSION		
74	AMOUNT AS PER CITY COMMISSION		
75	AMOUNT AS PER CITY COMMISSION		
76	AMOUNT AS PER CITY COMMISSION		
77	AMOUNT AS PER CITY COMMISSION		
78	AMOUNT AS PER CITY COMMISSION		
79	AMOUNT AS PER CITY COMMISSION		
80	AMOUNT AS PER CITY COMMISSION		
81	AMOUNT AS PER CITY COMMISSION		
82	AMOUNT AS PER CITY COMMISSION		
83	AMOUNT AS PER CITY COMMISSION		
84	AMOUNT AS PER CITY COMMISSION		
85	AMOUNT AS PER CITY COMMISSION		
86	AMOUNT AS PER CITY COMMISSION		
87	AMOUNT AS PER CITY COMMISSION		
88	AMOUNT AS PER CITY COMMISSION		
89	AMOUNT AS PER CITY COMMISSION		
90	AMOUNT AS PER CITY COMMISSION		
91	AMOUNT AS PER CITY COMMISSION		
92	AMOUNT AS PER CITY COMMISSION		
93	AMOUNT AS PER CITY COMMISSION		
94	AMOUNT AS PER CITY COMMISSION		
95	AMOUNT AS PER CITY COMMISSION		
96	AMOUNT AS PER CITY COMMISSION		
97	AMOUNT AS PER CITY COMMISSION		
98	AMOUNT AS PER CITY COMMISSION		
99	AMOUNT AS PER CITY COMMISSION		
100	AMOUNT AS PER CITY COMMISSION		



PORT ANNE
PHASES TWO & THREE
WILLIAMSBURG, VIRGINIA

WATER DEVELOPMENT PLAN
PHASE DEVELOPMENT PLAN NO. 1

MATCH LINE SEE SHEET NO. 8



PHASE 2A

PHASE 2B (PRELIMINARY)

ADDITIONAL SPECIAL NOTES

1. All utility easements shall be shown in accordance with the City of Williamsburg's standards.
2. All utility easements shall be shown in accordance with the City of Williamsburg's standards.
3. All utility easements shall be shown in accordance with the City of Williamsburg's standards.
4. All utility easements shall be shown in accordance with the City of Williamsburg's standards.
5. All utility easements shall be shown in accordance with the City of Williamsburg's standards.

SPECIAL NOTES

1. All utility easements shall be shown in accordance with the City of Williamsburg's standards.
2. All utility easements shall be shown in accordance with the City of Williamsburg's standards.
3. All utility easements shall be shown in accordance with the City of Williamsburg's standards.
4. All utility easements shall be shown in accordance with the City of Williamsburg's standards.
5. All utility easements shall be shown in accordance with the City of Williamsburg's standards.
6. All utility easements shall be shown in accordance with the City of Williamsburg's standards.
7. All utility easements shall be shown in accordance with the City of Williamsburg's standards.
8. All utility easements shall be shown in accordance with the City of Williamsburg's standards.
9. All utility easements shall be shown in accordance with the City of Williamsburg's standards.
10. All utility easements shall be shown in accordance with the City of Williamsburg's standards.

STREET NAME CHART

RESTRICTION	STREET NAME	WIDTH	TYPE	NAME
30'	A' STREET	30'	R/W	WILLIAM WAY
30'	B' STREET	30'	R/W	WILLIAM WAY
30'	C' COURT	30'	R/W	BENTLEY COURT
30'	D' COURT	30'	R/W	BENTLEY COURT
30'	E' COURT	30'	R/W	BENTLEY COURT
30'	F' COURT	30'	R/W	BENTLEY COURT
30'	G' COURT	30'	R/W	BENTLEY COURT
30'	H' COURT	30'	R/W	BENTLEY COURT
30'	I' COURT	30'	R/W	BENTLEY COURT
30'	J' COURT	30'	R/W	BENTLEY COURT
30'	K' COURT	30'	R/W	BENTLEY COURT
30'	L' COURT	30'	R/W	BENTLEY COURT
30'	M' COURT	30'	R/W	BENTLEY COURT
30'	N' COURT	30'	R/W	BENTLEY COURT
30'	O' COURT	30'	R/W	BENTLEY COURT
30'	P' COURT	30'	R/W	BENTLEY COURT
30'	Q' COURT	30'	R/W	BENTLEY COURT
30'	R' COURT	30'	R/W	BENTLEY COURT
30'	S' COURT	30'	R/W	BENTLEY COURT
30'	T' COURT	30'	R/W	BENTLEY COURT
30'	U' COURT	30'	R/W	BENTLEY COURT
30'	V' COURT	30'	R/W	BENTLEY COURT
30'	W' COURT	30'	R/W	BENTLEY COURT
30'	X' COURT	30'	R/W	BENTLEY COURT
30'	Y' COURT	30'	R/W	BENTLEY COURT
30'	Z' COURT	30'	R/W	BENTLEY COURT

Designed: WCB/CFL
 Draw: T/A
 Checked: ABS
 Scale: 1"=20'
 Date: 8/30/85
 File No: E-84819
 Project No: 84819A
 Sheet No:

