

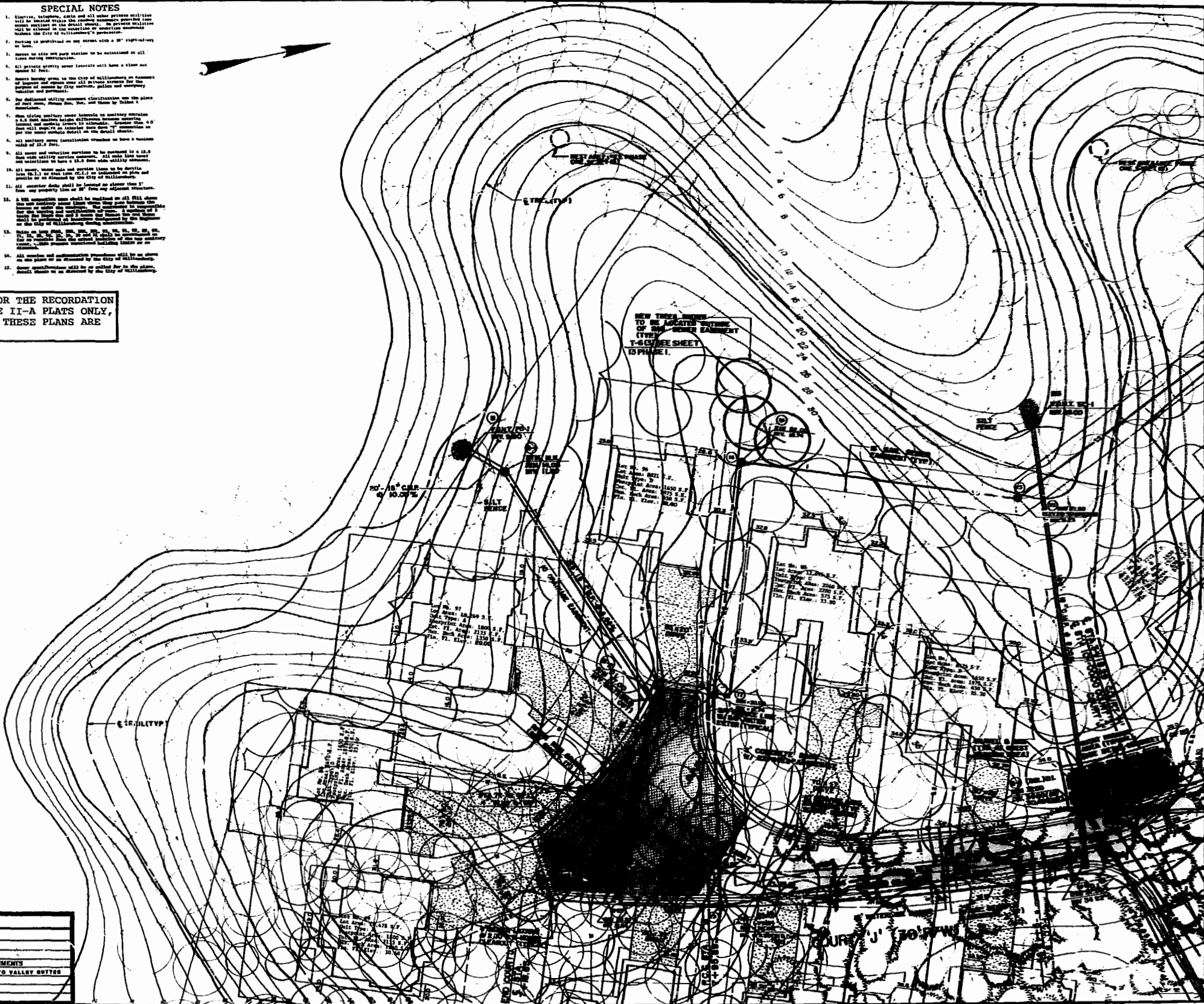
STREET NAME CHART

DESTINATION	RIGHT-OF-WAY	NAME
"A" STREET	50' R/W	WILLIAM WAY
"A" STREET	30' R/W	WILLIAM WAY
"C" COURT	30' R/W	BERTIER WAY
"H" COURT	40' R/W	BREMHOUSE AVENUE
"I" COURT	30' R/W	FRENCHMANS KEY
"J" COURT	30' R/W	FRENCHMANS KEY
"K" COURT	40' R/W	COME POINT LAKE
"L" COURT	30' R/W	COME POINT LAKE
"M" COURT	30' R/W	JIGGITS LAKE
"N" COURT	30' R/W	THE PALISADES
"N" COURT	40' R/W	THE PALISADES

SPECIAL NOTES

1. Elevation, including, but not all other between utilities will be located within the property lines. Utility easements will be shown on the plat. Utility easements will be shown on the plat. Utility easements will be shown on the plat.
2. Elevation is prohibited on any street with a 30' right-of-way or less.
3. Elevation on site and pour station to be maintained at all times during construction.
4. All private property owner interests will have a clear and unobstructed view.
5. Elevation on site and pour station to be maintained at all times during construction.
6. The dedicated utility easement location on the plat of any street, Phase Two, Two, and Three by Table 1.
7. Elevation on site and pour station to be maintained at all times during construction.
8. Elevation on site and pour station to be maintained at all times during construction.
9. Elevation on site and pour station to be maintained at all times during construction.
10. Elevation on site and pour station to be maintained at all times during construction.
11. Elevation on site and pour station to be maintained at all times during construction.
12. Elevation on site and pour station to be maintained at all times during construction.
13. Elevation on site and pour station to be maintained at all times during construction.
14. Elevation on site and pour station to be maintained at all times during construction.
15. Elevation on site and pour station to be maintained at all times during construction.

THESE PLANS ARE FOR THE RECORDATION OF PORT ANNE PHASE II-A PLATS ONLY, ANY OTHER PART OF THESE PLANS ARE PRELIMINARY.



REVISIONS	
DATE	DESCRIPTION
7-25-85	A.M.S. AS PER CITY COMMENTS
9-30-85	A.M.S. AS PER CITY COMMENTS
10-30-85	A.M.S. - REVISED PER FINAL CITY COMMENTS
2/18/86	WCS-REVISED SEWER, SEWAGE CURB TO VALLEY BUTTER
2/18/86	WCS-AS PER CITY COMMENTS
3/10/87	WCS-AS PER CITY COMMENTS
3-10-87	REVISED SANITARY SEWER ELEVATIONS

MATCH LINE SEE SHEET NO. 3

MATCH LINE SEE SHEET NO. 2

SITE DEVELOPMENT PLAN

PORT ANNE

PHASES TWO & THREE

WILLIAMSBURG, VIRGINIA

Designed: wcs/cpl
Drawn: Y/A
Checked: AGS
Scale: 1"=20'
Date: 2/28/86
File No: E-84019
Project No: 84019A
Sheet No: 4

MATCH LINE SEE SHEET NO. 3

