

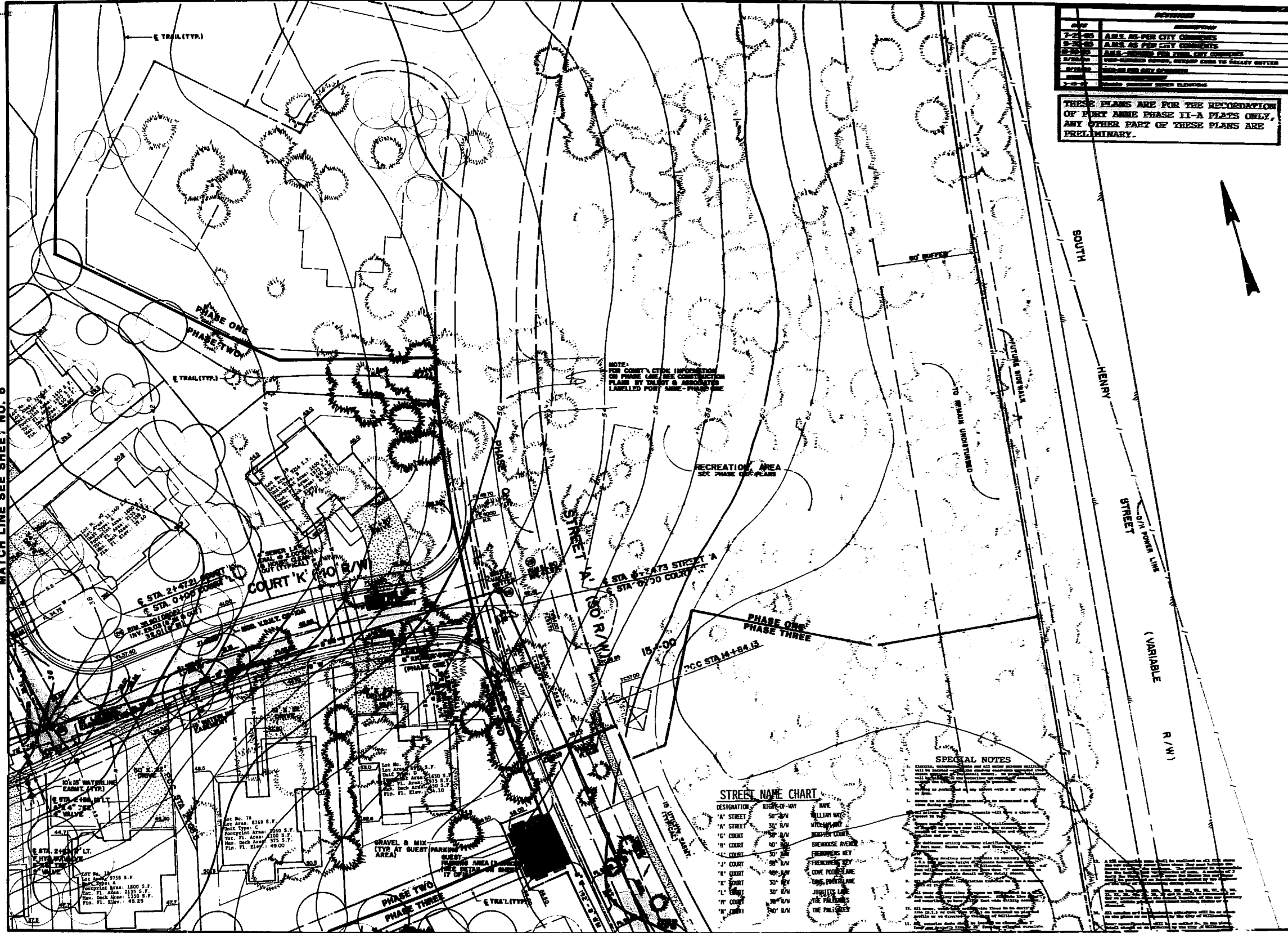
REV	DESCRIPTION
1-2-80	AMS AS PER CITY COMMENTS
2-2-80	AMS AS PER CITY COMMENTS
3-2-80	AMS AS PER CITY COMMENTS
4-2-80	AMS AS PER CITY COMMENTS
5-2-80	AMS AS PER CITY COMMENTS
6-2-80	AMS AS PER CITY COMMENTS
7-2-80	AMS AS PER CITY COMMENTS
8-2-80	AMS AS PER CITY COMMENTS
9-2-80	AMS AS PER CITY COMMENTS
10-2-80	AMS AS PER CITY COMMENTS
11-2-80	AMS AS PER CITY COMMENTS
12-2-80	AMS AS PER CITY COMMENTS

THESE PLANS ARE FOR THE RECODIFICATION OF PART ANNE PHASE II-A PLATS ONLY, ANY OTHER PART OF THESE PLANS ARE PRELIMINARY.

**T&A**  
**Talbot & Associates Ltd.**  
 ARCHITECTS, ENGINEERS, PLANNERS  
 1100 W. 14th Street, Suite 1000  
 Williamsburg, Virginia 23185  
 Tel: (804) 261-1100

**SITE DEVELOPMENT PLAN**  
**PORT ANNE**  
 PHASES TWO & THREE  
 WILLIAMSBURG, VIRGINIA

Designed: WCB/CPL  
 Drawn: T/A  
 Checked: ADS  
 Scale: 1"=20'  
 Date: 8/30/85  
 File No: E-84019  
 Project No: 84019A  
 Sheet No:



NOTE: FOR COURT, CITE INFORMATION ON PHASE ONE SEE CONSTRUCTION PLANS BY TALBOT & ASSOCIATES LABELLED PORT ANNE - PHASE ONE

RECREATION AREA  
 SEE PHASE ONE PLANS

**SPECIAL NOTES**

**STREET NAME CHART**

DESIGNATION	RIGHT-OF-WAY	NAME
"A" STREET	50' R/W	WILLIAM WALK
"B" STREET	50' R/W	WILKINSON
"C" COURT	50' R/W	DEWEY COURT
"D" COURT	40' R/W	BENEDICT AVENUE
"E" COURT	50' R/W	BENEDICT KEY
"F" COURT	50' R/W	FRANCIS KEY
"G" COURT	40' R/W	LOVE POTTS LANE
"H" COURT	50' R/W	LONG PASTURE
"I" COURT	50' R/W	JURRISS LANE
"J" COURT	50' R/W	THE PALMERS
"K" COURT	50' R/W	THE PALMERS
"L" COURT	50' R/W	THE PALMERS
"M" COURT	50' R/W	THE PALMERS
"N" COURT	50' R/W	THE PALMERS
"O" COURT	50' R/W	THE PALMERS
"P" COURT	50' R/W	THE PALMERS
"Q" COURT	50' R/W	THE PALMERS
"R" COURT	50' R/W	THE PALMERS
"S" COURT	50' R/W	THE PALMERS
"T" COURT	50' R/W	THE PALMERS
"U" COURT	50' R/W	THE PALMERS
"V" COURT	50' R/W	THE PALMERS
"W" COURT	50' R/W	THE PALMERS
"X" COURT	50' R/W	THE PALMERS
"Y" COURT	50' R/W	THE PALMERS
"Z" COURT	50' R/W	THE PALMERS

MATCH LINE SEE SHEET NO. 6

MATCH LINE SEE SHEET NO. 5

MATCH LINE SEE SHEET NO. 2

