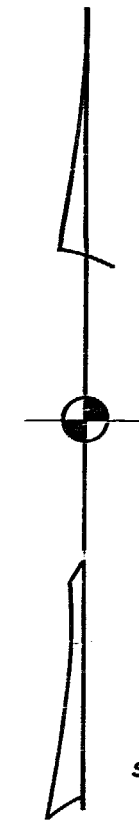
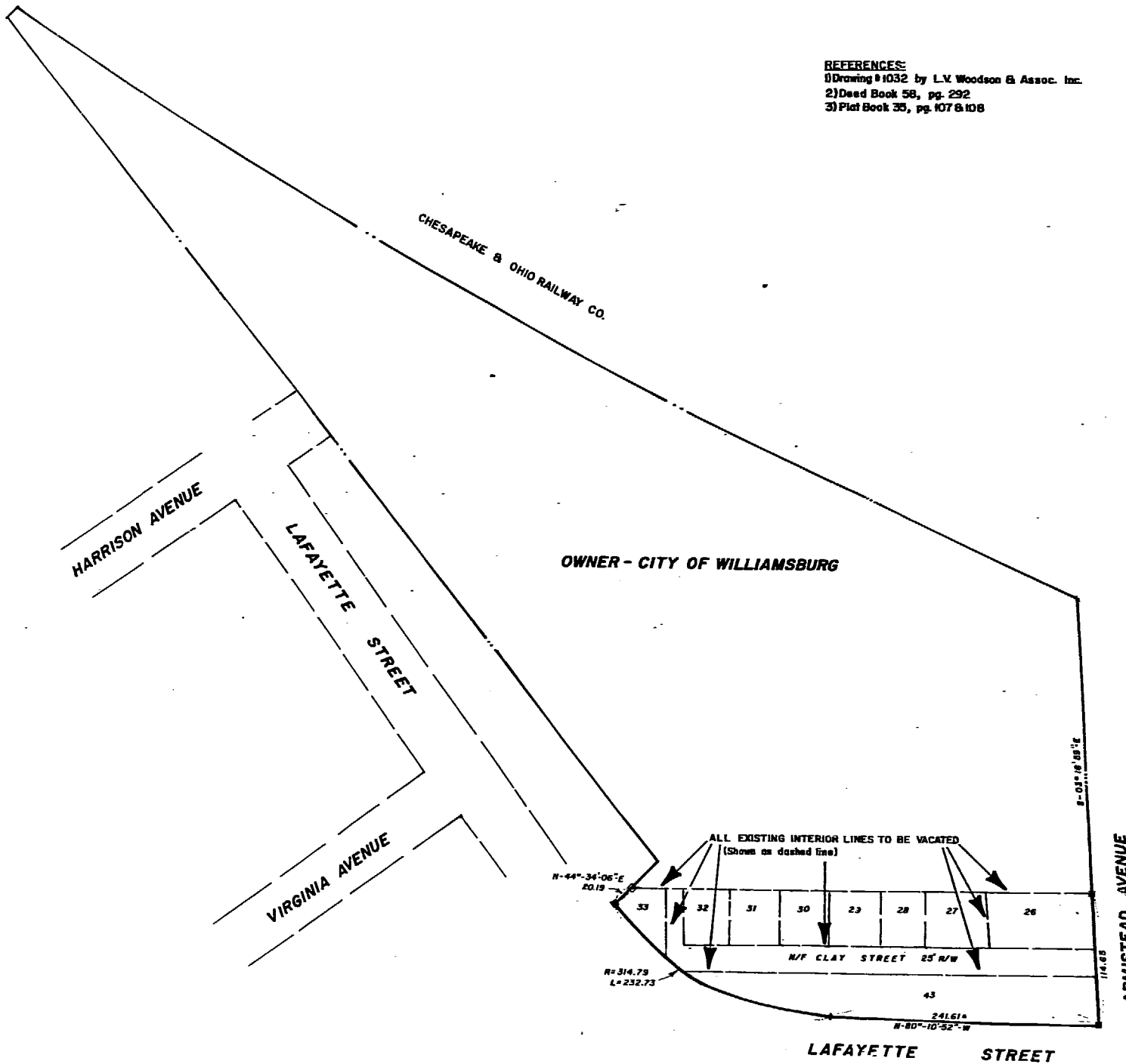


REFERENCES
1) Drawing # 1032 by L.V. Woodson & Assoc. Inc.
2) Deed Book 58, pg. 292
3) Plat Book 33, pg. 107 & 108



SCALE: 1" = 50'

CITY OF WILLIAMSBURG

PROPERTY VACATION MAP CLAY STREET AND CONTIGUOUS LOTS

MAY 21, 1987



BUSINESS RECORDS CORPORATION

12.35
Approved by City of Williamsburg, 1987
D. E. No. 80 - 746
Robert Stewart, Clerk