

CURVE		DATA				
NO	DELTA	RADIUS	ARC	CHORD	TANGENT	CHORD BEARING
A	47° 00' 55"	1512.59'	1241.02'	1206.50'	657.85'	S 40° 02' 41" E
B	45° 15' 32"	1187.73'	896.75'	875.60'	470.56'	N 59° 03' 22" E
C	32° 58' 15"	30.00'	48.68'	43.51'	31.60'	S 8° 57' 31" E
D	86° 43' 30"	25.00'	37.84'	34.33'	23.61'	N 81° 11' 36" E
E	93° 39' 19"	25.00'	40.87'	36.47'	26.65'	N 8° 36' 59" W
F	12° 13' 12"	937.73'	200.00'	199.62'	100.58'	N 43° 56' 28" E
G	71° 50' 24"	887.73'	183.45'	183.12'	92.05'	N 44° 07' 52" E

PLAT SHOWING
PILOT LIFE TRACT
AND
LOTS 2, 3, & 4 OF PILOT LIFE TRACT
PHASE I - PROFESSIONAL CENTER
JAMESTOWN DISTRICT - JAMES CITY COUNTY - VIRGINIA
AND
CITY OF WILLIAMSBURG - VIRGINIA

JOHNSON BAIRD AND ASSOCIATES
4395-B ROUTE 134 - TABB, VIRGINIA - 23602

SCALE: 1" = 200'
DATE: JUNE 12, 1987
FILE NO: 97-183
SHEET: 1
OF: 1

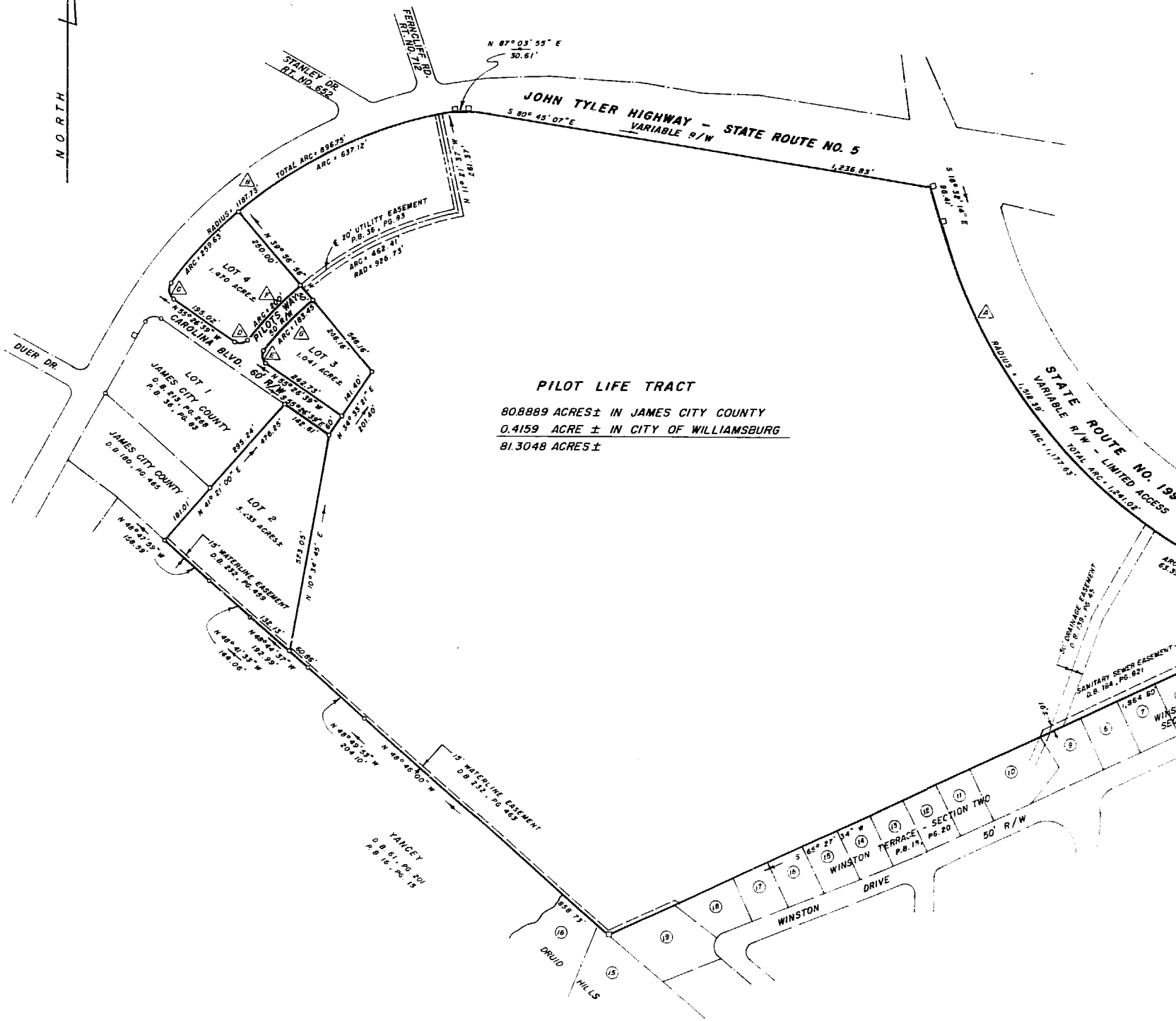
REVISED: JULY 7, 1987 - 15' WATERLINE EASEMENT

LEGEND

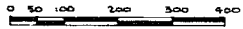
- CONCRETE MONUMENT
- IRON PIPE

LEGAL REFERENCES

- | | |
|-------------------|--|
| D.B. 55, PG. 445 | D.B. 47, PG. 342 |
| D.B. 124, PG. 673 | D.B. 132, PG. 79 |
| D.B. 45, PG. 242 | D.B. 125, PG. 439 |
| D.B. 124, PG. 635 | D.B. 139, PG. 45 |
| D.B. 124, PG. 293 | D.B. 139, PG. 138 - VEFOO EAS. NOT SHOWN |
| D.B. 130, PG. 117 | D.B. 213, PG. 257 |
| P.B. 28, PG. 64 | P.B. 35, PG. 64 |
| P.B. 27, PG. 24 | P.B. 35, PG. 83 |
| P.B. 27, PG. 20 | NAVY P.B. 4, PGS. 257 to 262 |
| P.B. 27, PG. 25 | |



PILOT LIFE TRACT
808889 ACRES ± IN JAMES CITY COUNTY
0.4159 ACRE ± IN CITY OF WILLIAMSBURG
81.3048 ACRES ±



1.59 p.m.
10/24/87
357
125
W. J. Baird