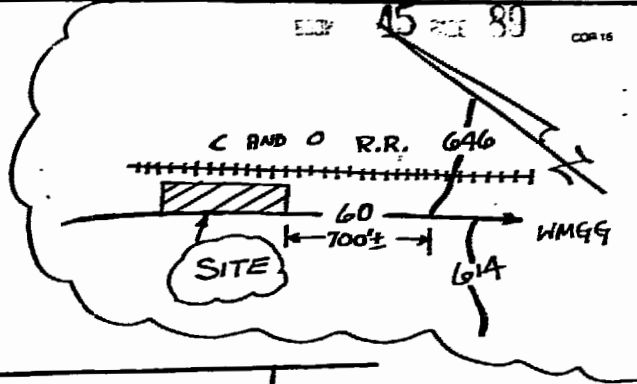
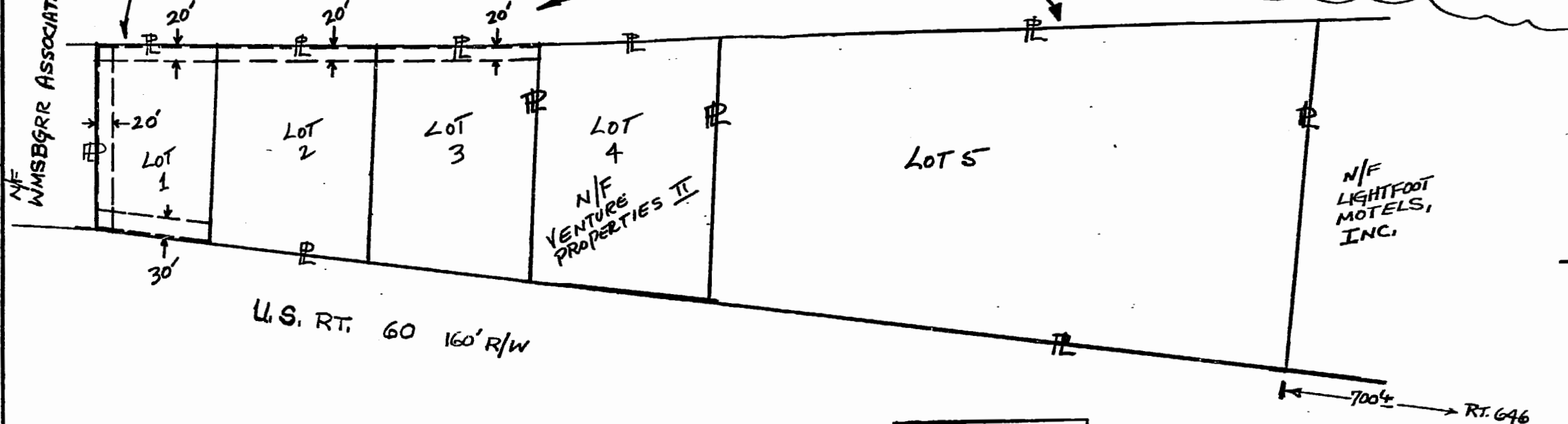


PROPERTY OF:
 ANGELO H. MAGERAS, JAMES M. KOKOLIS, PAUL L. WILSON,
 PARTNERS, T/A VENTURE PROPERTIES II, A VIRGINIA
 GENERAL PARTNERSHIP.



N/F WMSBRR ASSOCIATES

C AND O RAILWAY CO.



U.S. RT. 60 160' R/W

N/F
 LIGHTFOOT
 MOTELS,
 INC.

700' RT. 646

OWNER'S INITIALS
 PH [Signature]
 Angelo Mageras



Plat To Accompany
 Right-Of-Way Agreement

Virginia Electric and Power Company

UNDERGROUND

District	Williamsburg	
District	County	State
	STONEHOUSE	JAMES CITY, VA.
Office	Plat Number	
	Williamsburg	28-87-0073
Estimate Number	Grid Number	
45441-00	M1740	
Date	By	
5-20-87	Wm Ferguson	

Legend
 --- LOCATION OF BOUNDARY LINES OF RIGHT-OF-WAY ON PROPERTY OF OWNER,
 VENTURE PROPERTIES II, A VIRGINIA GENERAL PARTNERSHIP,
 WIDTHS AS SHOWN.

Recorded ¹²⁻²¹ 24th day of July, 1987
 P. B. No. 354 pages 126
 [Signatures] Clerk

