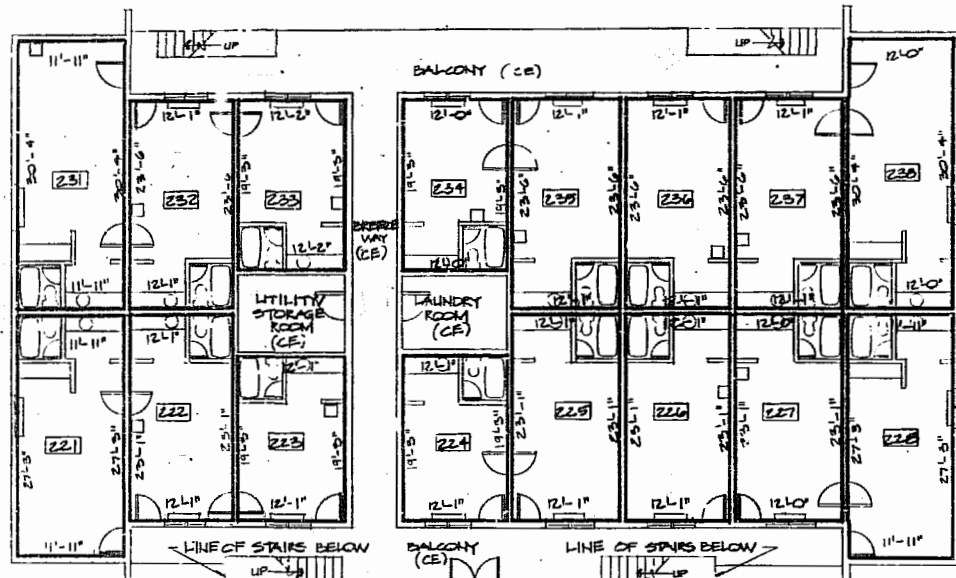
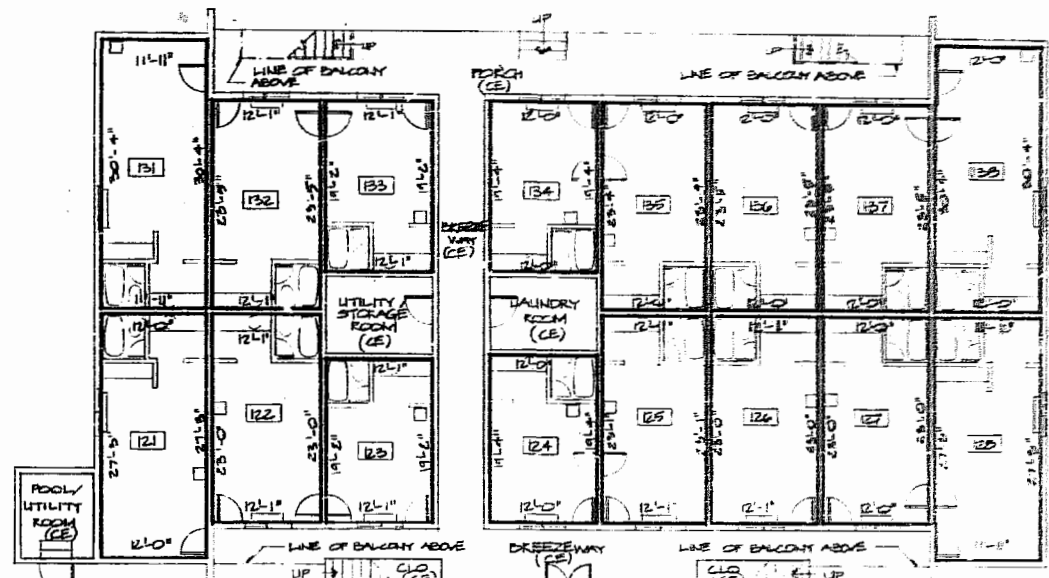


**SECOND STREET INN CONDOMINIUMS**  
 WILLIAMSBURG, VIRGINIA  
 216 PARKWAY DRIVE  
**FIRST and SECOND FLOOR PLANS**



**SECOND FLOOR PLAN**  
 SCALE: 1/8"=1'-0"



**FIRST FLOOR PLAN**  
 SCALE: 1/8"=1'-0"

VIRGINIA:  
 IN THE CLERK'S OFFICE OF THE CIRCUIT COURT  
 OF WILLIAMSBURG, VIRGINIA, ON THE 27 DAY  
 OF August, 1987, THIS PLAN WAS RECORDED  
 AND RETURNED TO RECORD IN MAP BOOK 80, AT  
 PAGE 212.

- NOTES:
1. DIMENSIONS SHOWN THIS [127] REPRESENT THE ASSIGNED UNIT NUMBER. THE TOTAL LENGTH OF UNIT ARE FROM FINISHED CONCRETE SLAB TO TOP EDGE OF GYPSUM CEILING AS SHOWN (1'-0").
  2. ALL OTHER AREAS ARE COMMON ELEMENTS LABELED (CE).



Designed	
Drawn	ACE
Checked	DFB
Scale	1/8" = 1'-0"
Date	8/27/87
File No.	A-57200
Project No.	072111