

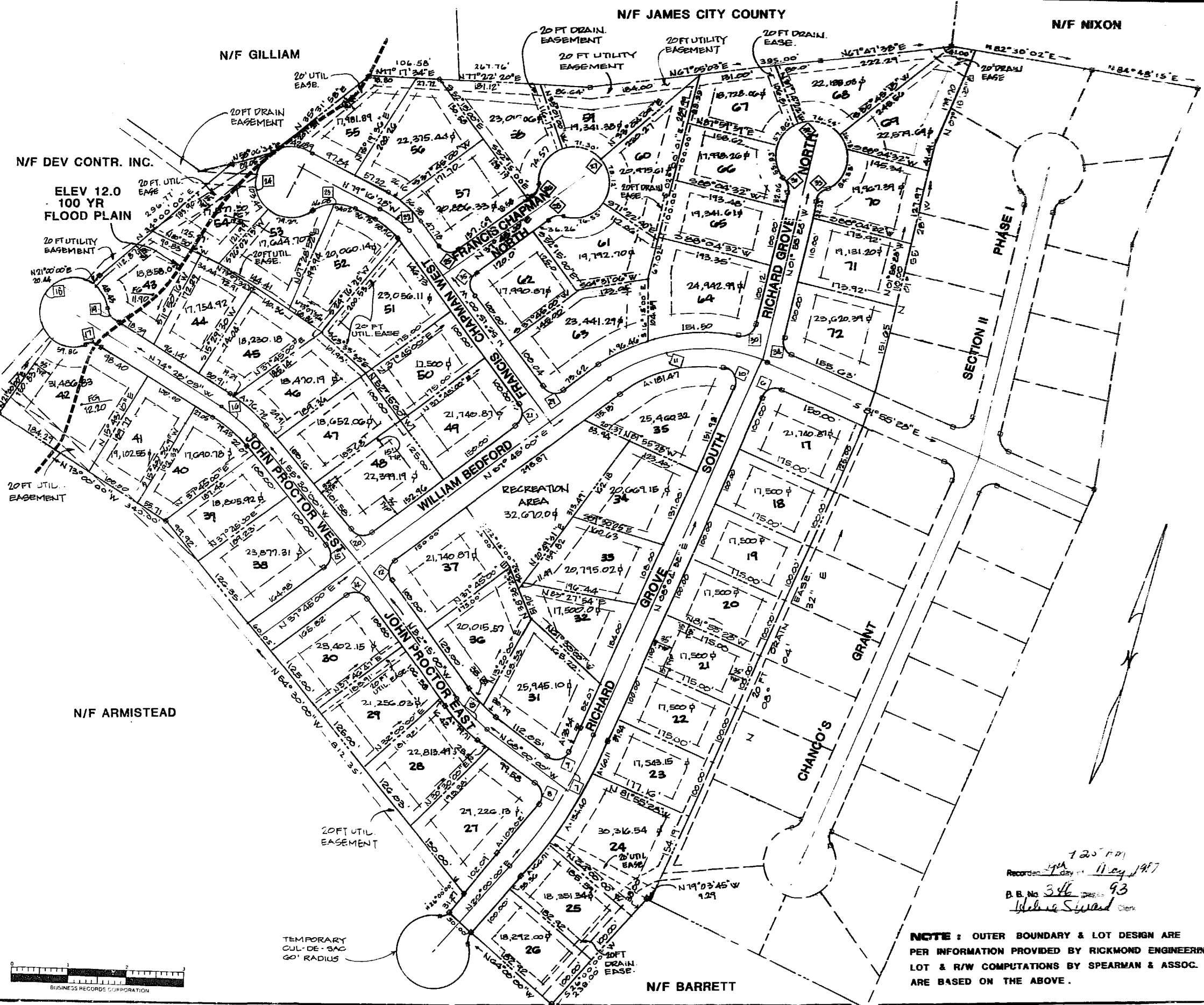
N/F JAMES CITY COUNTY

N/F NIXON

N/F GILLIAM

N/F DEV CONTR. INC.

ELEV 12.0
100 YR
FLOOD PLAIN



N/F ARMISTEAD

N/F BARRETT

RICKMOND ENGINEERING INC.
CIVIL ENGINEERING
ENVIRONMENTAL ENGINEERING
LAND DEVELOPMENT PLANNING
800-C. RICHMOND COURT
WILLIAMSBURG, VA 23185
(804) 833-8333

CHANGO'S GRANT SECTION II
SUBDIVISION PLAT
PHASE II
JAMES CITY COUNTY VIRGINIA

125' x 121'
Recorded 1997 May 11, 1997
B.B. No. 346 pages 93
John Seward Clerk

NOTE: OUTER BOUNDARY & LOT DESIGN ARE PER INFORMATION PROVIDED BY RICKMOND ENGINEERING. LOT & R/W COMPUTATIONS BY SPEARMAN & ASSOC. ARE BASED ON THE ABOVE.

