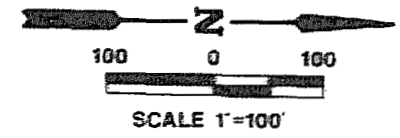


LOTS CURVE TABLE

LOT NO.	DELTA	RADIUS	LENGTH	TANGENT	CHORD	CHORD BEARING
48A	09°36'14"	232.56'	40.33'	20.22'	40.28'	S40°37'06"W
48B	109°36'00"	25.00'	47.97'	35.66'	40.94'	N89°23'00"W
49	10°48'46"	232.56'	43.89'	22.01'	43.82'	S50°59'37"W
50A	48°06'23"	50.00'	41.98'	22.32'	40.76'	S07°35'33"W
50B	72°51'38"	50.00'	63.58'	36.90'	59.38'	S19°58'12"W
51	60°05'23"	50.00'	52.44'	28.92'	50.07'	S85°22'19"W
52	28°57'20"	50.00'	25.27'	12.91'	25.00'	N50°06'20"W
53	28°56'01"	50.00'	25.25'	12.90'	24.98'	N21°09'40"W
54	34°46.00"	50.00'	30.34'	15.65'	29.88'	N10°41'21"E
55	28°19'39"	221.44'	109.48'	55.88'	108.37'	N42°14'10"W
56	02°22'18"	182.56'	7.56'	7.56'	7.56'	N55°12'58"W
57A	70°04'00"	25.00'	30.57'	17.53'	28.70'	N00°37'00"E
57B	18°22'42"	182.56'	58.56'	29.53'	58.31'	N44°50'21"E
58	78°00'00"	107.13'	145.85'	86.76'	134.84'	N73°25'00"N
60	34°55'00"	50.00'	30.47'	15.73'	30.00'	S85°02'30"W
61	91°47'00"	50.00'	80.10'	51.58'	71.80'	N31°36'30"W
62	72°34'37"	50.00'	63.24'	36.71'	59.19'	N50°34'18"E
63A	03°46'02"	995.97'	65.49'	32.75'	65.47'	S67°34'55"W
63B	60°00'00"	30.00'	52.36'	28.87'	50.00'	S82°25'00"E
63C	40°43'23"	50.00'	35.54'	18.56'	34.79'	S72°46'42"E
64A	06°11'43"	995.97'	107.69'	53.90'	107.64'	S62°36'03"W
64B	16°28'06"	157.13'	45.17'	22.74'	45.01'	N75°49'03"W
65A	06°01'57"	995.97'	104.86'	52.48'	104.82'	S56°29'13"W
65B	88°07'54"	50.00'	76.91'	48.40'	69.55'	N82°27'49"W
65C	03°10'08"	1542.27'	85.30'	42.66'	85.29'	N39°58'56"W
65D	09°13'34"	157.13'	25.30'	12.68'	25.28'	N88°39'53"W
66A	04°51'04"	1542.27'	130.58'	65.33'	130.54'	N43°59'32"W
66B	39°25'21"	157.13'	56.30'	28.00'	56.30'	S67°00'39"E
67A	03°42'42"	1542.27'	99.91'	49.97'	99.89'	N48°16'25"W
67B	85°46'46"	25.00'	37.43'	23.22'	34.03'	N07°14'23"W
67C	109°36'00"	25.00'	47.97'	35.66'	40.94'	S89°23'00"E
67D	12°52'58"	157.13'	35.33'	17.74'	35.26'	S40°51'29"E

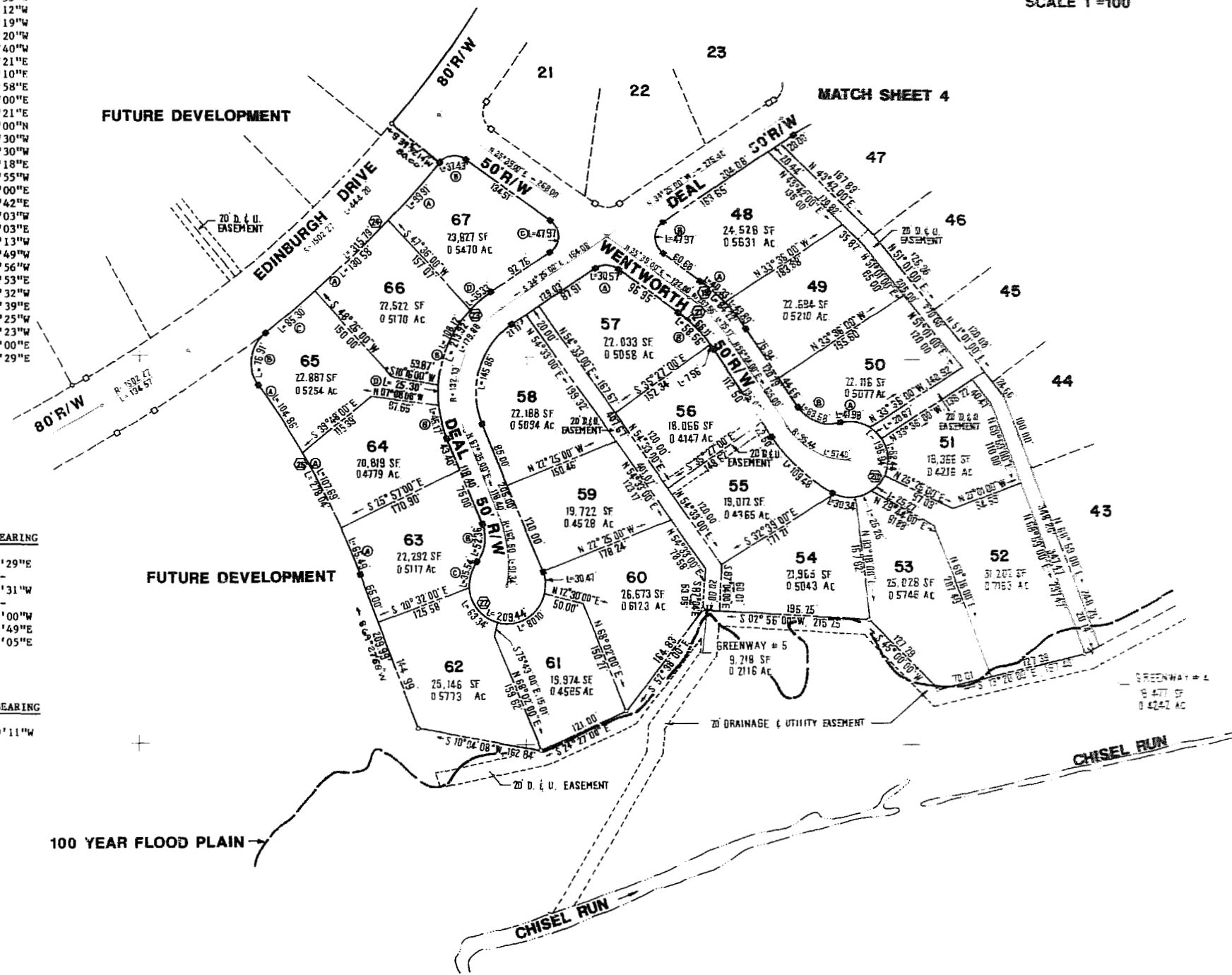


R/W CURVE TABLE

CURVE NO.	DELTA	RADIUS	LENGTH	TANGENT	CHORD	CHORD BEARING
19	20°45'00"	232.56'	84.22'	42.58'	83.76'	N46°01'29"E
20	224°31'59"	50.00'	195.94'	--	--	--
21	20°45'00"	182.56'	66.11'	33.42'	65.75'	S46°01'31"W
22	240°00'00"	50.00'	209.44'	--	--	--
23	78°00'00"	157.13'	213.92'	127.25'	197.78'	N73°25'00"W
24	11°43'54"	1542.27'	315.79'	158.45'	315.24'	S44°15'49"E
25	15°59'42"	995.97'	278.04'	139.93'	277.14'	N61°28'05"E

GREENWAYS CURVE TABLE

GRNWY NO.	DELTA	RADIUS	LENGTH	TANGENT	CHORD	CHORD BEARING
4	23°40'52"	50.00'	20.67'	10.48'	20.52'	S43°29'11"W



AES, a professional corporation
 1781 Jamestown Road, Williamsburg, Va. 23185
 804-253-0040
 Engineering, Planning, Surveying

PLAT OF
FORD'S COLONY
 @ **WILLIAMSBURG**
 SECTION VI
 LOT 48 TO LOT 67

BERKELEY DISTRICT JAMES CITY COUNTY VIRGINIA



NO.	DATE	REVISION / COMMENT / NOTE	BY

Designed LCA/AS	Drawn SS
Scale 1"=100'	Date JAN 1987
Project No. 5652	
Drawing No. 5 of 5	