

OWNER'S CONSENT TO EASEMENT

THE EASEMENT SHOWN ON THIS PLAT IS WITH THE FREE CONSENT AND IN ACCORDANCE WITH THE WISHS AND DESIRES OF THE UNDERSIGNED OWNERS AND PROPRIETORS.

TITLE TO THE LAND SHOWN HEREON IS VESTED IN THE NAME OF WOODLAND FARMS I AND IS RECORDED IN THE CLERK'S OFFICE OF JAMES CITY COUNTY, VIRGINIA.

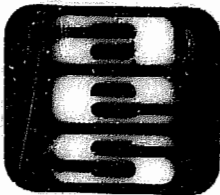
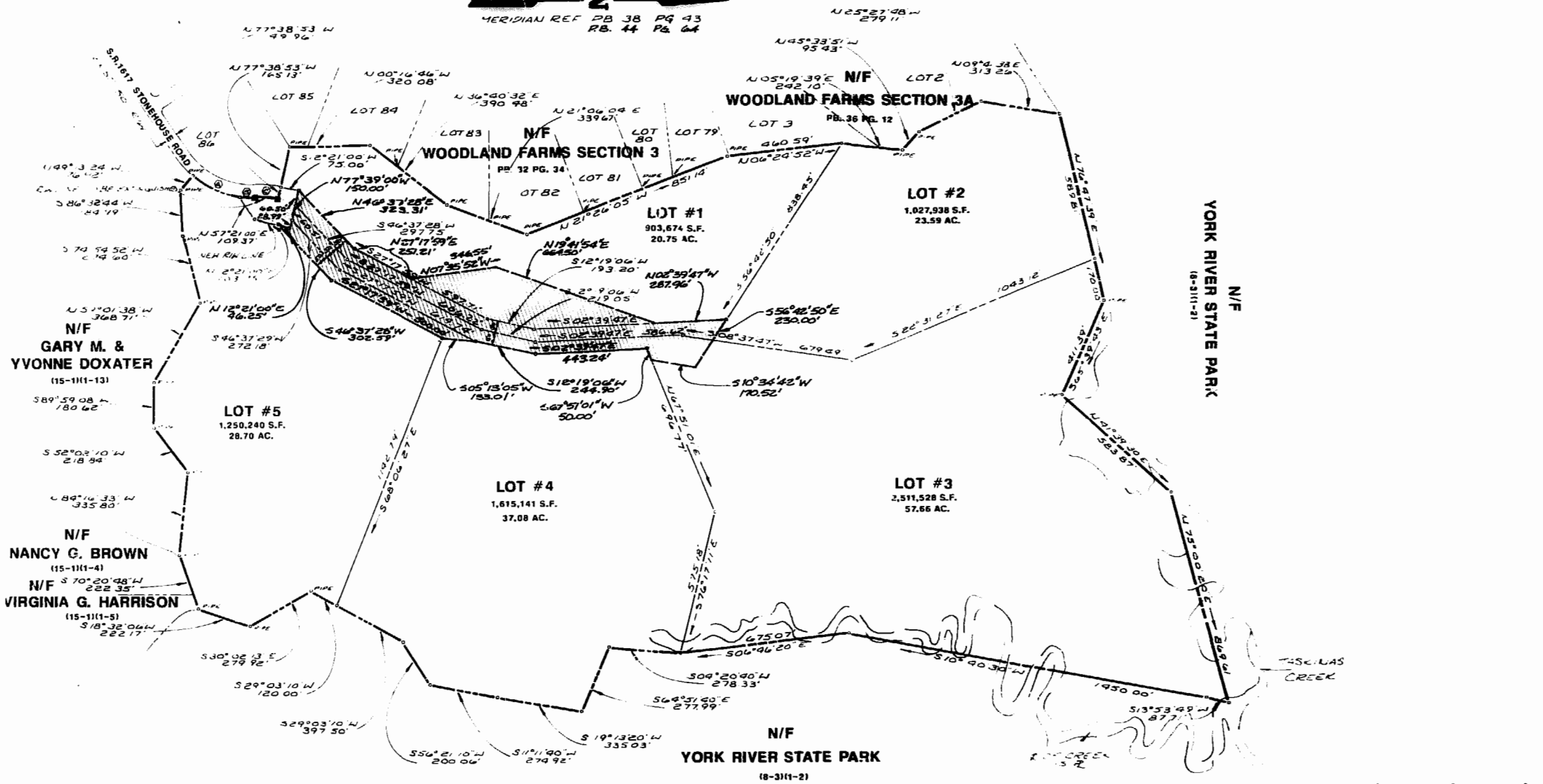
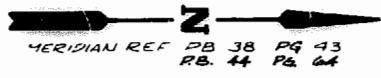
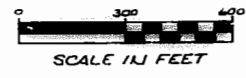
BY: WOODLAND FARMS I

Robert J. Kijz

NOTES

- EASEMENT AREA = 8.1252 ACRES
- WOODLAND FARMS SECTION 5 IS RECORDED IN DB. 329, PG. 703 AND IN RB. 44, PG. 64.
- HATCHED AREA DENOTES LIMITS OF EASEMENT FOR INGRESS, EGRESS, DRAINAGE AND UTILITIES.

	DELTA	RADIUS	LENGTH	TANGENT	CHORD	CW BEARING
①	32°43'59"	370.00'	211.38'	108.46'	208.02'	N24°16'17"E
②	10°32'30"	370.00'	68.07'	34.13'	67.98'	N02°38'03"E
③	14°59'30"	330.00'	34.13'	43.41'	86.08'	N04°51'25"E



AES, a professional corporation
 1761 Jamestown Road, Williamsburg, Va. 23185
 804-253-0040
 Engineering, Planning, Surveying

PLAT OF EASEMENT
FOR INGRESS, EGRESS, DRAINAGE & UTILITIES
FOR USE IN COMMON BY LOTS 1-5
WOODLAND FARMS SECTION 5

JAMES CITY COUNTY VIRGINIA



DATE	REVISION / COMMENT / NOTE	BY

Designed	Drawn
Scale	Date
Project No.	Drawing No.
PLAT	