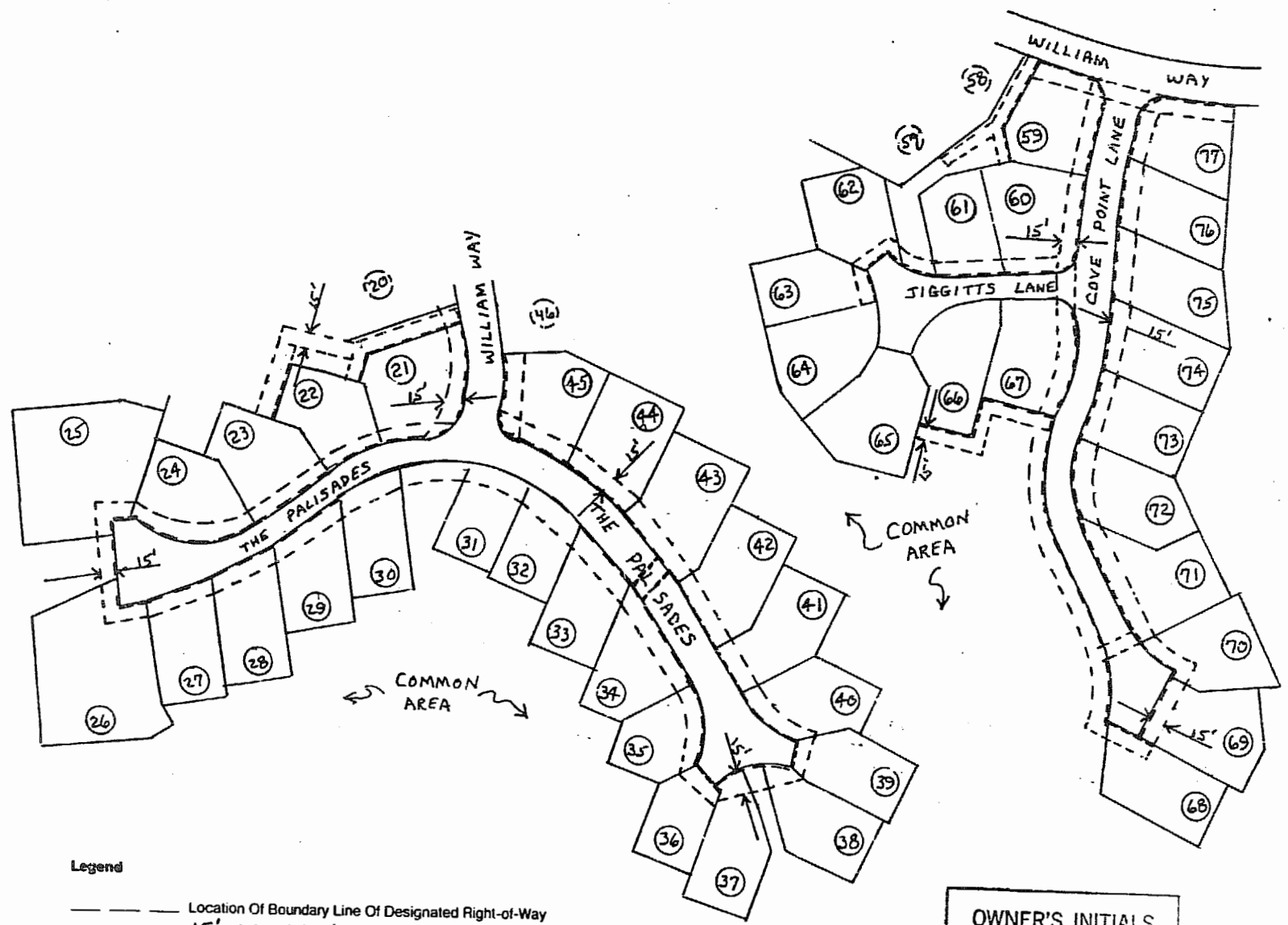
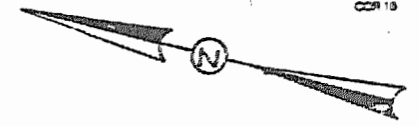


South Henry Street  
← TO RT 199



PORT ANNE SUBD.  
SECTION 2  
LOTS 21 - 77

OWNED BY:

PORT ANNE ASSOCIATES,  
A VIRGINIA LIMITED PARTNERSHIP,  
BY DIVARIS DEVELOPMENT CORP.,  
A VIRGINIA CORPORATION,  
BY GERALD S. DIVARIS,  
PRESIDENT.



Plat To Accompany  
Right-Of-Way Agreement

Virginia Electric and Power Company

WILLIAMSBURG U.G.  
District

WILLIAMSBURG VA.  
District-Township-Borough City State

WILLIAMSBURG 28-87-0005  
Office Plat Number

28-044552-00 M-1836-D  
Estimate Number Grid Number

2-16-87 J.G. KEENE  
Date By

OWNER'S INITIALS  
*[Signature]*

Legend

----- Location Of Boundary Line Of Designated Right-of-Way  
15' IN WIDTH

----- INDICATES PROPERTY LINE 15  
RIGHT-OF-WAY BOUNDARY.

① LOT NUMBER

3244  
Recorded 25th day of February 1987  
in  
B. B. No. 78 pages 308  
Neemes Ward Clerk  
Bryan D. Thurtel, Dep. Clerk



BUSINESS RECORDS CORPORATION