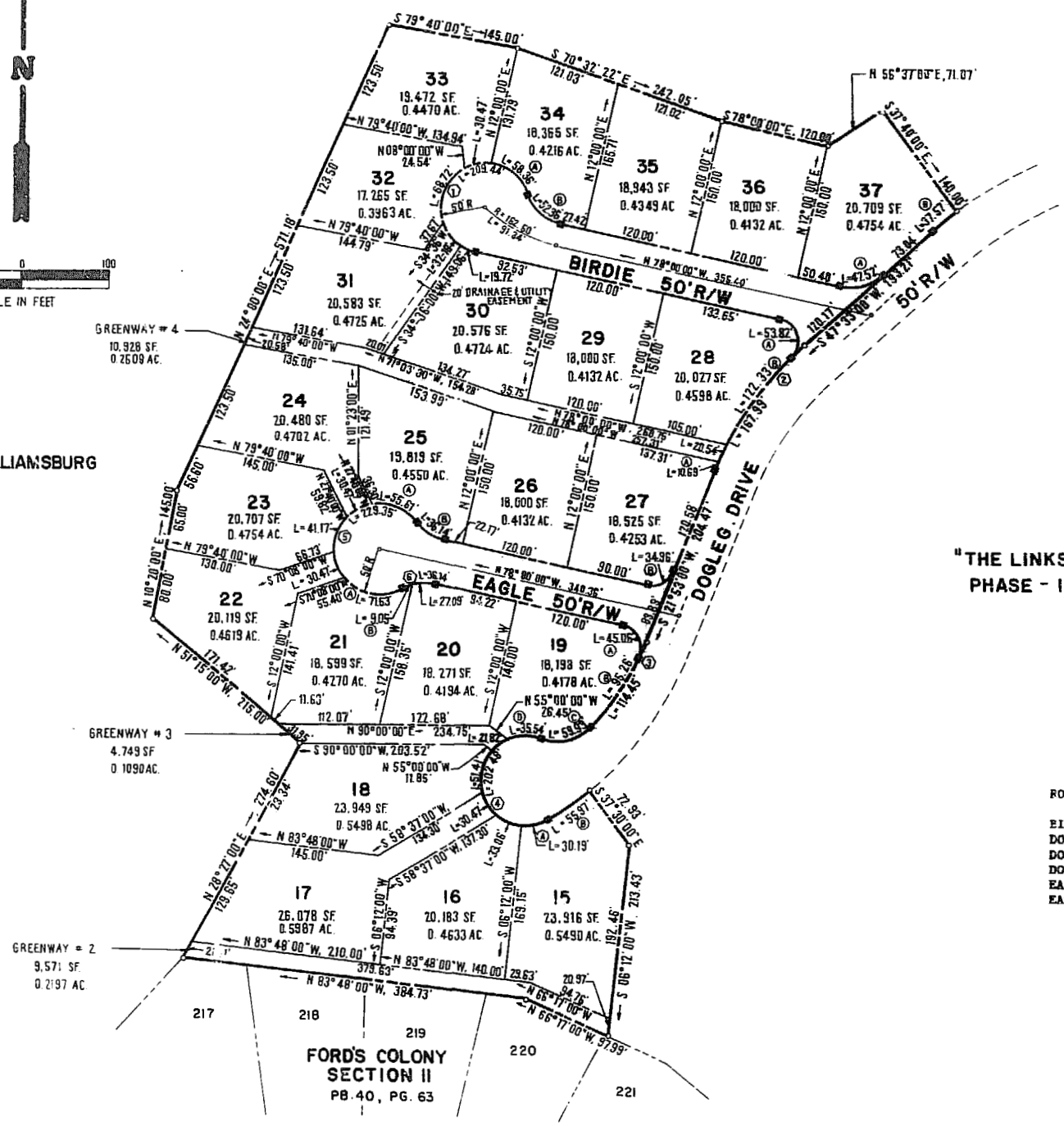
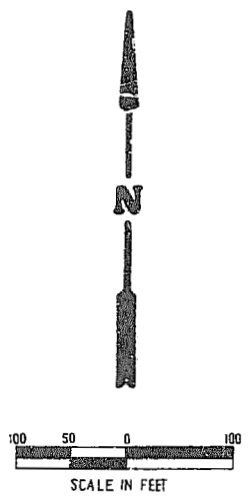


N/F
FORD'S COLONY AT WILLIAMSBURG
FUTURE DEVELOPMENT



LOT	DELTA	RADIUS	LENGTH	TANGENT	CHORD	CHORD BEARING
15A	34°35'25"	50.00'	30.19'	15.57'	29.73'	376°00'41"W
15B	08°33'07"	375.00'	53.97'	28.04'	55.92'	354°26'26"W
16	37°52'55"	50.00'	33.06'	17.15'	32.46'	567°45'07"W
17	36°54'55"	50.00'	30.47'	15.72'	30.00'	331°21'11"W
18	58°54'21"	50.00'	51.41'	28.23'	49.17'	695°23'23"W
19A	103°16'01"	25.00'	45.06'	33.58'	39.20'	626°22'59"W
19B	16°47'37"	325.00'	95.28'	47.97'	94.92'	333°39'00"W
19C	68°40'35"	50.00'	59.93'	34.16'	56.41'	376°23'55"W
19D	46°43'11"	50.00'	35.54'	18.56'	34.79'	333°37'23"W
20	31°02'32"	50.00'	27.09'	13.89'	26.76'	333°37'44"W
21A	82°05'08"	50.00'	73.63'	43.53'	65.66'	373°22'01"W
21B	10°22'02"	50.00'	9.05'	4.54'	9.04'	355°46'21"W
22	34°54'55"	50.00'	30.47'	15.72'	30.00'	319°51'59"W
23	47°10'25"	50.00'	43.17'	21.83'	40.01'	321°10'41"W
24	34°54'55"	50.00'	30.47'	15.72'	30.00'	362°13'21"W
25A	63°43'46"	50.00'	55.41'	31.08'	52.79'	362°13'21"W
25B	41°26'35"	50.00'	36.14'	18.90'	35.36'	322°46'59"W
27A	01°37'57"	375.00'	10.69'	5.36'	16.69'	357°17'43"W
27B	80°07'00"	25.00'	34.96'	22.02'	32.18'	322°46'59"W
28A	123°20'38"	25.00'	53.82'	46.38'	64.01'	316°19'41"W
28B	18°41'25"	375.00'	122.33'	61.73'	121.79'	335°59'55"W
30	22°36'00"	50.00'	19.72'	9.99'	19.60'	366°42'00"W
31	36°52'12"	50.00'	32.18'	16.07'	31.62'	333°42'54"W
32	78°44'37"	50.00'	66.72'	41.03'	63.44'	330°50'30"W
33	34°54'55"	50.00'	30.47'	15.72'	30.00'	377°40'16"W
34A	66°52'17"	50.00'	58.36'	33.81'	55.10'	351°25'08"W
34B	60°00'00"	50.00'	52.36'	28.87'	50.00'	336°00'00"W
37A	54°27'00"	50.00'	47.52'	25.72'	45.75'	374°46'38"W
37B	04°47'00"	450.00'	37.57'	18.80'	37.56'	349°56'36"W

GREENWAYS CURVE TABLE

NO.	DELTA	RADIUS	LENGTH	TANGENT	CHORD	CHORD BEARING
3	25°00'25"	50.00'	21.82'	11.09'	21.65'	557°30'48"W
4	03°08'15"	375.00'	20.54'	10.27'	20.53'	S25° 5'05"W

R/W CURVE TABLE

ROAD NAME	NO.	DELTA	RADIUS	LENGTH	TANGENT	CHORD	CHORD BEARING
BIRDIE	1	240°00'00"	50.00'	209.44'	—	—	—
DOGLEG	2	25°40'00"	375.00'	167.99'	85.43'	166.59'	E34°43'00"E
DOGLEG	3	20°10'38"	325.00'	114.45'	57.52'	113.86'	E31°58'19"E
DOGLEG	4	232°01'12"	50.00'	202.48'	—	—	—
EAGLE	5	262°49'29"	50.00'	229.35'	—	—	—
EAGLE	6	41°24'35"	50.00'	36.14'	18.90'	35.36'	S61°17'43"W

N/F
FORD'S COLONY AT WILLIAMSBURG

FORD'S COLONY
SECTION II
 PB. 40, PG. 63



AES, a professional corporation

1761 Jamestown Road, Williamsburg, Va. 23185
 804-253-0040
 Engineering, Planning, Surveying

PLAT OF
FORD'S COLONY
AT WILLIAMSBURG
SECTION V
LOT 15 TO LOT 37

POWhatan DISTRICT JAMES CITY COUNTY VIRGINIA



No.	DATE	REVISION / COMMENT / NOTE	BY

Designed AES	Drawn AES
Scale 1"=100'	Date 1/25/08
Project No. 5652	
Drawing No. 2 of 2	