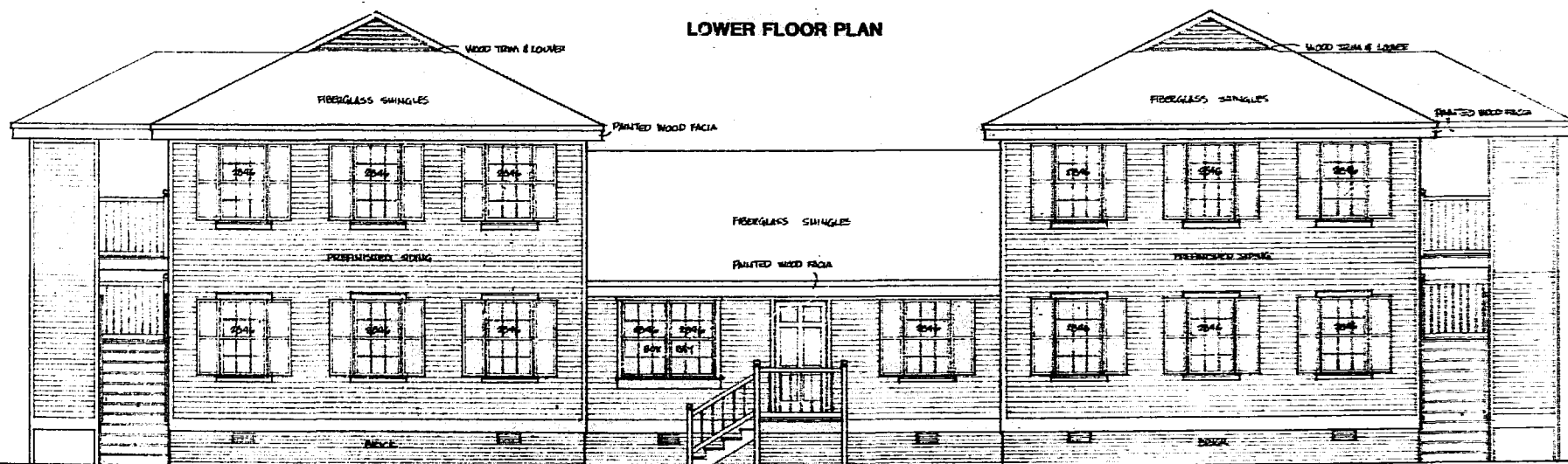


LOWER FLOOR PLAN



FRONT ELEVATION

1/4"=1'

CAMPUS COURT

8. Henry St., Williamsburg, Va.

Owner/Developer, South Henry Enterprises

EXHIBIT B

ROBERT COWLING, AIA, & ASSOCIATES • ARCHITECTURE • PLANNING
SUITE SEVEN, 1611-B JOHN JEFFERSON SQUARE, BUSCH CORPORATE CENTER, WILLIAMSBURG, VIRGINIA 23188

12:03 p.m. Received 3/12/88 by J. D. Smith, AIA 819 St. 77 Williamsburg, Va.	
PROJECT 8516	DRAWING 1