



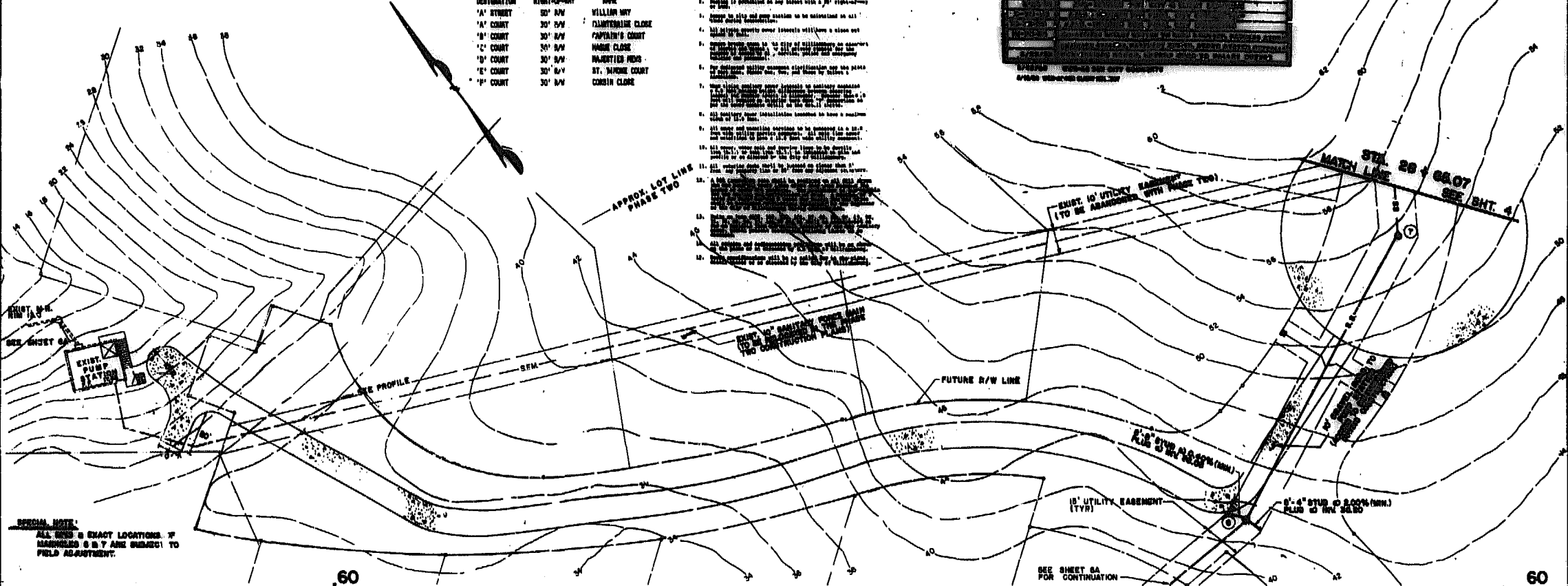
OFF-SITE SANITARY SEWER & SANITARY FORCE MAIN  
**PORT ANNE**  
PHASE ONE  
WILLIAMSBURG, VIRGINIA

Designed: WDR/ORL  
Drawn: R.L.L.  
Checked: ABS  
Scale: 1" = 10'  
Date: 2-22-65  
File No: E-5503  
Project No: 54018  
Sheet No: 6  
of 14 Sheets

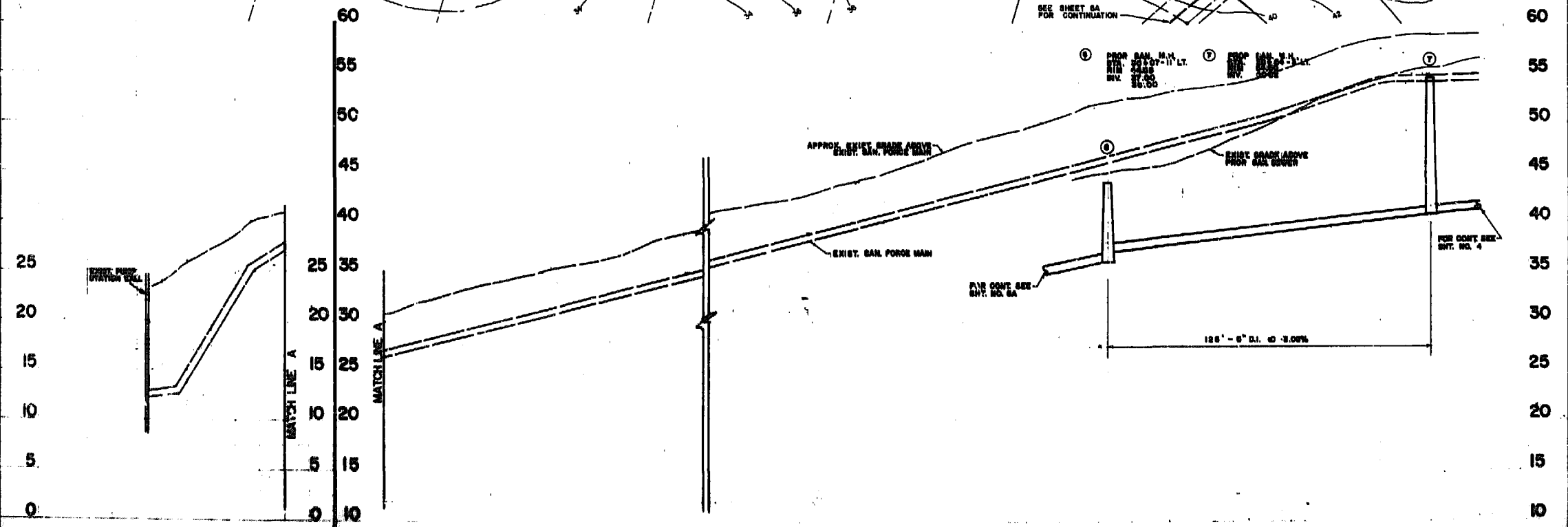
**STREET NAME CHART**

DESCRIPTION	RIGHT-OF-WAY	MARK
1/4" STREET	50' R/W	VILLAGE WAY
1/4" COURT	30' R/W	FLAMINGHAM CLOSE
1/4" COURT	30' R/W	PAPWORTH COURT
1/4" COURT	30' R/W	WARRIE CLOSE
1/4" COURT	30' R/W	HAUNTED HILLS
1/4" COURT	30' R/W	ST. MARINE COURT
1/4" COURT	30' R/W	CONVIN CLOSE

- SPECIAL NOTES**
1. ALL UTILITIES SHOWN ON THIS PLAN ARE BASED ON RECORD PLANS AND FIELD SURVEY.
  2. THE EXISTING SANITARY SEWER AND SANITARY FORCE MAIN ARE SHOWN AS DASHED LINES.
  3. THE PROPOSED SANITARY SEWER AND SANITARY FORCE MAIN ARE SHOWN AS SOLID LINES.
  4. THE PROPOSED SANITARY SEWER AND SANITARY FORCE MAIN SHALL BE CONSTRUCTED TO THE STANDARD SPECIFICATIONS FOR SANITARY SEWER AND SANITARY FORCE MAIN.
  5. THE PROPOSED SANITARY SEWER AND SANITARY FORCE MAIN SHALL BE CONSTRUCTED TO THE STANDARD SPECIFICATIONS FOR SANITARY SEWER AND SANITARY FORCE MAIN.
  6. THE PROPOSED SANITARY SEWER AND SANITARY FORCE MAIN SHALL BE CONSTRUCTED TO THE STANDARD SPECIFICATIONS FOR SANITARY SEWER AND SANITARY FORCE MAIN.
  7. THE PROPOSED SANITARY SEWER AND SANITARY FORCE MAIN SHALL BE CONSTRUCTED TO THE STANDARD SPECIFICATIONS FOR SANITARY SEWER AND SANITARY FORCE MAIN.
  8. THE PROPOSED SANITARY SEWER AND SANITARY FORCE MAIN SHALL BE CONSTRUCTED TO THE STANDARD SPECIFICATIONS FOR SANITARY SEWER AND SANITARY FORCE MAIN.
  9. THE PROPOSED SANITARY SEWER AND SANITARY FORCE MAIN SHALL BE CONSTRUCTED TO THE STANDARD SPECIFICATIONS FOR SANITARY SEWER AND SANITARY FORCE MAIN.
  10. THE PROPOSED SANITARY SEWER AND SANITARY FORCE MAIN SHALL BE CONSTRUCTED TO THE STANDARD SPECIFICATIONS FOR SANITARY SEWER AND SANITARY FORCE MAIN.
  11. THE PROPOSED SANITARY SEWER AND SANITARY FORCE MAIN SHALL BE CONSTRUCTED TO THE STANDARD SPECIFICATIONS FOR SANITARY SEWER AND SANITARY FORCE MAIN.
  12. THE PROPOSED SANITARY SEWER AND SANITARY FORCE MAIN SHALL BE CONSTRUCTED TO THE STANDARD SPECIFICATIONS FOR SANITARY SEWER AND SANITARY FORCE MAIN.
  13. THE PROPOSED SANITARY SEWER AND SANITARY FORCE MAIN SHALL BE CONSTRUCTED TO THE STANDARD SPECIFICATIONS FOR SANITARY SEWER AND SANITARY FORCE MAIN.
  14. THE PROPOSED SANITARY SEWER AND SANITARY FORCE MAIN SHALL BE CONSTRUCTED TO THE STANDARD SPECIFICATIONS FOR SANITARY SEWER AND SANITARY FORCE MAIN.
  15. THE PROPOSED SANITARY SEWER AND SANITARY FORCE MAIN SHALL BE CONSTRUCTED TO THE STANDARD SPECIFICATIONS FOR SANITARY SEWER AND SANITARY FORCE MAIN.
  16. THE PROPOSED SANITARY SEWER AND SANITARY FORCE MAIN SHALL BE CONSTRUCTED TO THE STANDARD SPECIFICATIONS FOR SANITARY SEWER AND SANITARY FORCE MAIN.
  17. THE PROPOSED SANITARY SEWER AND SANITARY FORCE MAIN SHALL BE CONSTRUCTED TO THE STANDARD SPECIFICATIONS FOR SANITARY SEWER AND SANITARY FORCE MAIN.
  18. THE PROPOSED SANITARY SEWER AND SANITARY FORCE MAIN SHALL BE CONSTRUCTED TO THE STANDARD SPECIFICATIONS FOR SANITARY SEWER AND SANITARY FORCE MAIN.
  19. THE PROPOSED SANITARY SEWER AND SANITARY FORCE MAIN SHALL BE CONSTRUCTED TO THE STANDARD SPECIFICATIONS FOR SANITARY SEWER AND SANITARY FORCE MAIN.
  20. THE PROPOSED SANITARY SEWER AND SANITARY FORCE MAIN SHALL BE CONSTRUCTED TO THE STANDARD SPECIFICATIONS FOR SANITARY SEWER AND SANITARY FORCE MAIN.



**SPECIAL NOTE:**  
ALL WELLS & EXACT LOCATIONS OF  
MANHOLES & B.Y. ARE SUBJECT TO  
FIELD ADJUSTMENT.



5  
4  
3  
2  
1  
0  
1  
2  
3  
4  
5  
6  
7  
8  
9  
10  
11  
12  
13  
14  
15