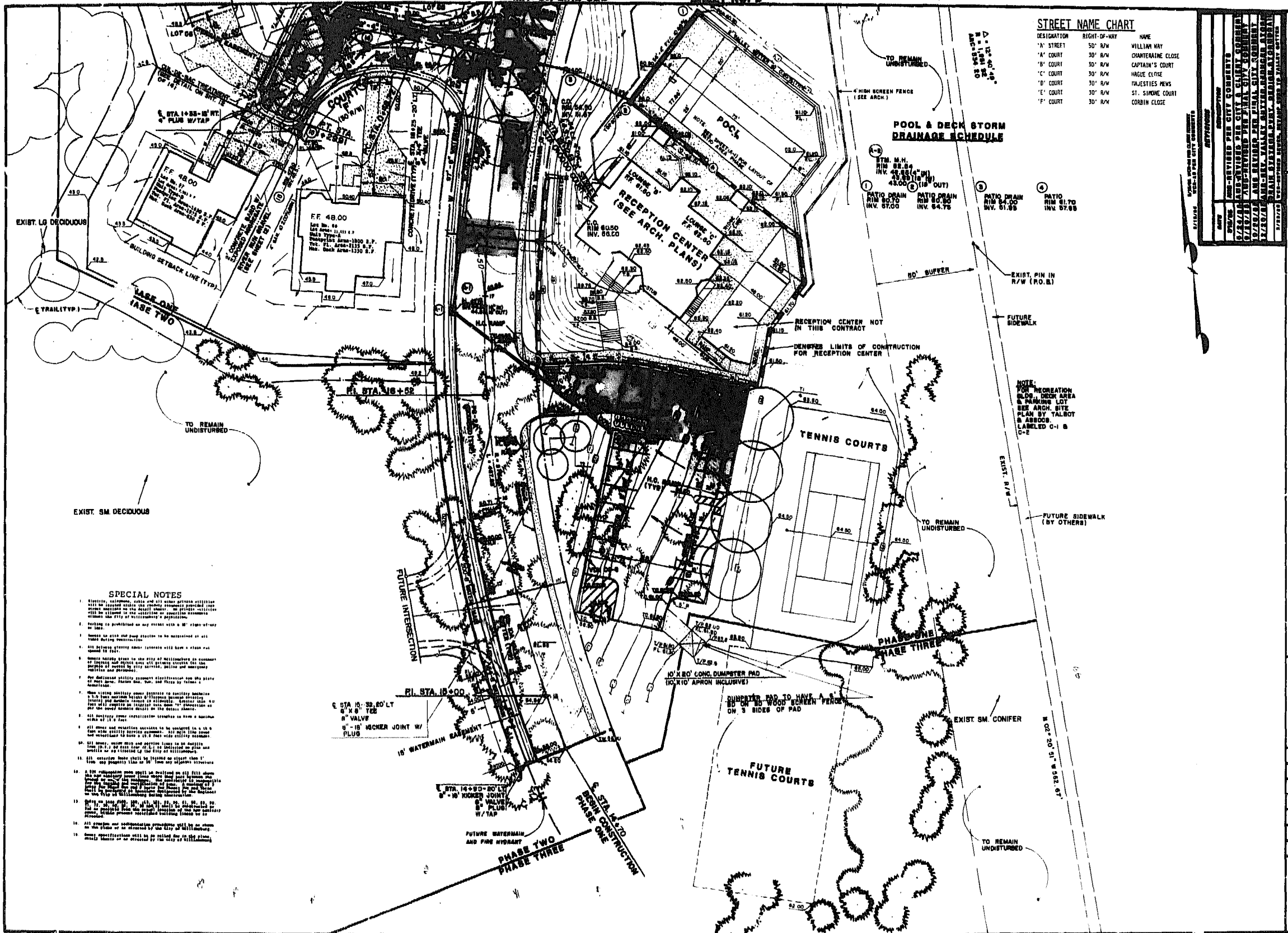


STREET NAME CHART

DESIGNATION	RIGHT-OF-WAY	HAVE
"A" STREET	50' R/W	WILLIAM WAY
"A" COURT	30' R/W	CHATERAINE CLOSE
"B" COURT	30' R/W	CAPTAIN'S COURT
"C" COURT	30' R/W	HAGUE CLOSE
"D" COURT	30' R/W	MAJESTIES NEWS
"E" COURT	30' R/W	ST. SIMONE COURT
"F" COURT	30' R/W	CORBIN CLOSE

POOL & DECK STORM DRAINAGE SCHEDULE

NO.	TYPE	FIN. M.H.	FIN. INV.	IN. (1" IN)	OUT (1" OUT)
1	PATIO DRAIN	RIM 80.70	INV. 87.00		
2	PATIO DRAIN	RIM 80.70	INV. 84.75		
3	PATIO DRAIN	RIM 84.00	INV. 81.85		
4	PATIO DRAIN	RIM 81.70	INV. 87.85		



EXIST. SM. DECIDUOUS

SPECIAL NOTES

1. Electrical, telephone, cable and all other utility lines shall be located as shown on the site plan. All utility lines shall be installed in accordance with the applicable codes and standards. All utility lines shall be installed in accordance with the applicable codes and standards.
2. All utility lines shall be installed in accordance with the applicable codes and standards.
3. All utility lines shall be installed in accordance with the applicable codes and standards.
4. All utility lines shall be installed in accordance with the applicable codes and standards.
5. All utility lines shall be installed in accordance with the applicable codes and standards.
6. All utility lines shall be installed in accordance with the applicable codes and standards.
7. All utility lines shall be installed in accordance with the applicable codes and standards.
8. All utility lines shall be installed in accordance with the applicable codes and standards.
9. All utility lines shall be installed in accordance with the applicable codes and standards.
10. All utility lines shall be installed in accordance with the applicable codes and standards.
11. All utility lines shall be installed in accordance with the applicable codes and standards.
12. All utility lines shall be installed in accordance with the applicable codes and standards.
13. All utility lines shall be installed in accordance with the applicable codes and standards.
14. All utility lines shall be installed in accordance with the applicable codes and standards.
15. All utility lines shall be installed in accordance with the applicable codes and standards.

**SITE DEVELOPMENT PLAN
PORT ANNE
PHASE ONE
W.L. LIAMSBURG, VIRGINIA**

Designed	WCR/CPL
Drawn	T/A
Checked	ABB
Scale	1"=20'
Date	2-28-85
File No	E-84019
Project No	84019
Sheet No	