

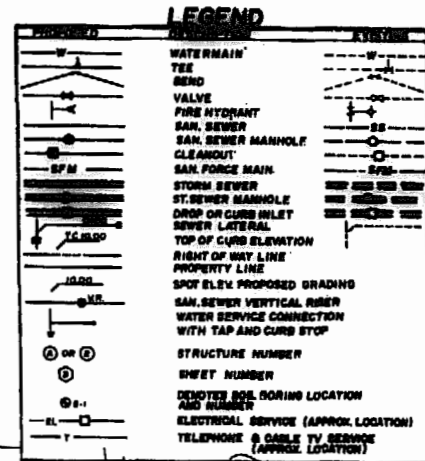
Talbot & Associates Ltd.
 7700 ...
 ...

SANITARY SEWER & WATER MASTER INDEX
PORT ANNE
 PHASE ONE
 WILLIAMSBURG, VIRGINIA

Designed: wcr/cpl
 Drawn: MJP
 Checked: ADS
 Scale: 1" = 100'
 Date: 2-26-85
 File No: E-84019
 Project No: 84039
 Sheet No: V

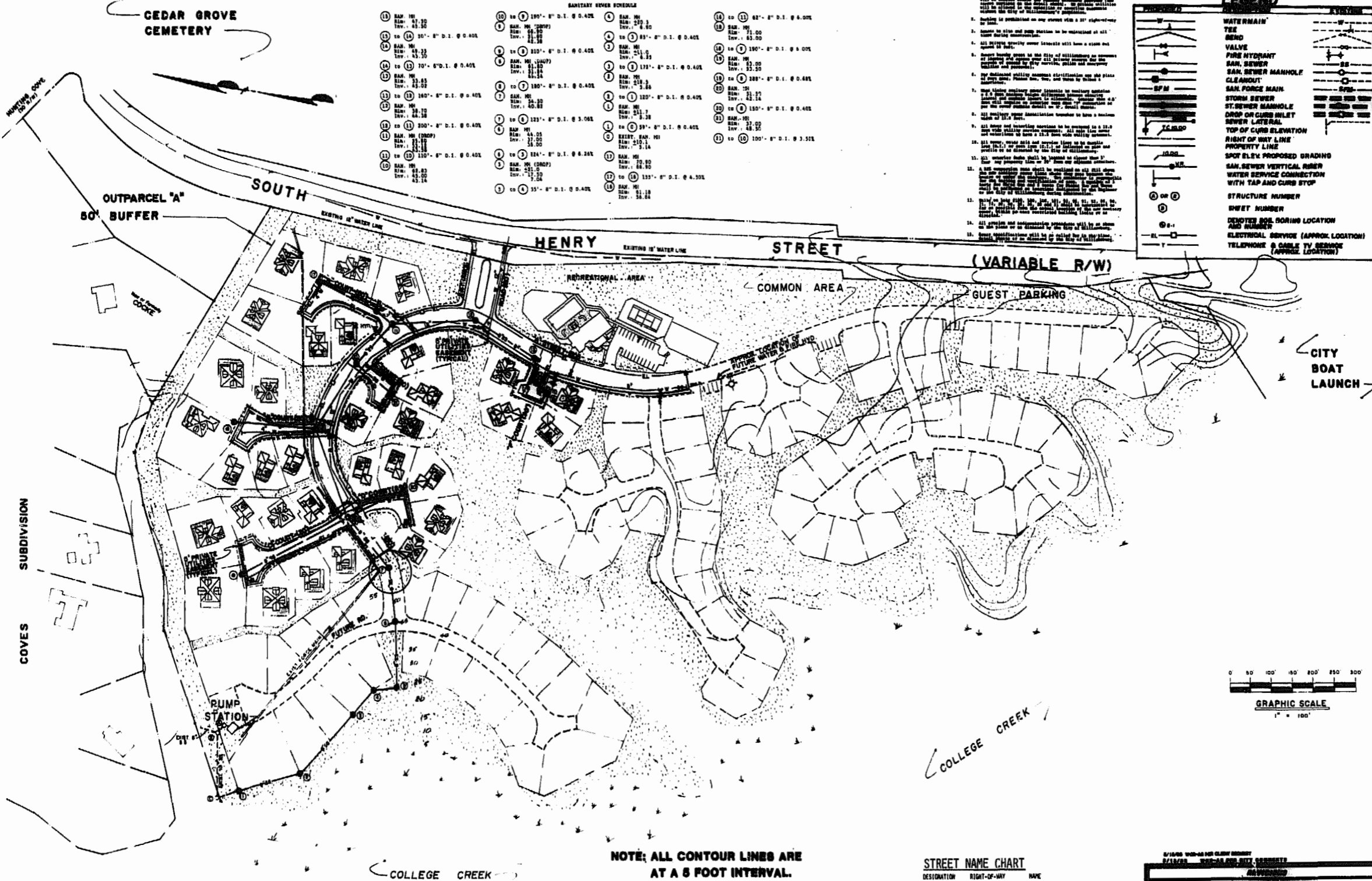
SPECIAL NOTES

1. All sanitary sewer lines and all other private utilities shall be installed in the street right-of-way. All utility lines shall be installed in the street right-of-way. All utility lines shall be installed in the street right-of-way.
2. Working is prohibited on any street with a 24" right-of-way or less.
3. All existing sanitary sewer laterals will have a clean out located in the street right-of-way.
4. Street lighting poles at the City of Williamsburg are owned by the City of Williamsburg. All existing street lighting poles shall be replaced by City of Williamsburg poles and all existing street lighting shall be replaced by City of Williamsburg street lighting.
5. All existing utility easements shall remain in place and shall be used for the purpose intended.
6. All existing utility easements shall remain in place and shall be used for the purpose intended.
7. All existing utility easements shall remain in place and shall be used for the purpose intended.
8. All existing utility easements shall remain in place and shall be used for the purpose intended.
9. All existing utility easements shall remain in place and shall be used for the purpose intended.
10. All existing utility easements shall remain in place and shall be used for the purpose intended.
11. All existing utility easements shall remain in place and shall be used for the purpose intended.
12. All existing utility easements shall remain in place and shall be used for the purpose intended.
13. All existing utility easements shall remain in place and shall be used for the purpose intended.
14. All existing utility easements shall remain in place and shall be used for the purpose intended.
15. All existing utility easements shall remain in place and shall be used for the purpose intended.



SANITARY SEWER SCHEDULE

① SAN. 10" 100' 8" D.I. @ 0.42%	① SAN. 10" 100' 8" D.I. @ 0.42%	① SAN. 10" 100' 8" D.I. @ 0.42%	① SAN. 10" 100' 8" D.I. @ 0.42%
② SAN. 10" 100' 8" D.I. @ 0.42%	② SAN. 10" 100' 8" D.I. @ 0.42%	② SAN. 10" 100' 8" D.I. @ 0.42%	② SAN. 10" 100' 8" D.I. @ 0.42%
③ SAN. 10" 100' 8" D.I. @ 0.42%	③ SAN. 10" 100' 8" D.I. @ 0.42%	③ SAN. 10" 100' 8" D.I. @ 0.42%	③ SAN. 10" 100' 8" D.I. @ 0.42%
④ SAN. 10" 100' 8" D.I. @ 0.42%	④ SAN. 10" 100' 8" D.I. @ 0.42%	④ SAN. 10" 100' 8" D.I. @ 0.42%	④ SAN. 10" 100' 8" D.I. @ 0.42%
⑤ SAN. 10" 100' 8" D.I. @ 0.42%	⑤ SAN. 10" 100' 8" D.I. @ 0.42%	⑤ SAN. 10" 100' 8" D.I. @ 0.42%	⑤ SAN. 10" 100' 8" D.I. @ 0.42%
⑥ SAN. 10" 100' 8" D.I. @ 0.42%	⑥ SAN. 10" 100' 8" D.I. @ 0.42%	⑥ SAN. 10" 100' 8" D.I. @ 0.42%	⑥ SAN. 10" 100' 8" D.I. @ 0.42%
⑦ SAN. 10" 100' 8" D.I. @ 0.42%	⑦ SAN. 10" 100' 8" D.I. @ 0.42%	⑦ SAN. 10" 100' 8" D.I. @ 0.42%	⑦ SAN. 10" 100' 8" D.I. @ 0.42%
⑧ SAN. 10" 100' 8" D.I. @ 0.42%	⑧ SAN. 10" 100' 8" D.I. @ 0.42%	⑧ SAN. 10" 100' 8" D.I. @ 0.42%	⑧ SAN. 10" 100' 8" D.I. @ 0.42%
⑨ SAN. 10" 100' 8" D.I. @ 0.42%	⑨ SAN. 10" 100' 8" D.I. @ 0.42%	⑨ SAN. 10" 100' 8" D.I. @ 0.42%	⑨ SAN. 10" 100' 8" D.I. @ 0.42%
⑩ SAN. 10" 100' 8" D.I. @ 0.42%	⑩ SAN. 10" 100' 8" D.I. @ 0.42%	⑩ SAN. 10" 100' 8" D.I. @ 0.42%	⑩ SAN. 10" 100' 8" D.I. @ 0.42%
⑪ SAN. 10" 100' 8" D.I. @ 0.42%	⑪ SAN. 10" 100' 8" D.I. @ 0.42%	⑪ SAN. 10" 100' 8" D.I. @ 0.42%	⑪ SAN. 10" 100' 8" D.I. @ 0.42%
⑫ SAN. 10" 100' 8" D.I. @ 0.42%	⑫ SAN. 10" 100' 8" D.I. @ 0.42%	⑫ SAN. 10" 100' 8" D.I. @ 0.42%	⑫ SAN. 10" 100' 8" D.I. @ 0.42%
⑬ SAN. 10" 100' 8" D.I. @ 0.42%	⑬ SAN. 10" 100' 8" D.I. @ 0.42%	⑬ SAN. 10" 100' 8" D.I. @ 0.42%	⑬ SAN. 10" 100' 8" D.I. @ 0.42%
⑭ SAN. 10" 100' 8" D.I. @ 0.42%	⑭ SAN. 10" 100' 8" D.I. @ 0.42%	⑭ SAN. 10" 100' 8" D.I. @ 0.42%	⑭ SAN. 10" 100' 8" D.I. @ 0.42%
⑮ SAN. 10" 100' 8" D.I. @ 0.42%	⑮ SAN. 10" 100' 8" D.I. @ 0.42%	⑮ SAN. 10" 100' 8" D.I. @ 0.42%	⑮ SAN. 10" 100' 8" D.I. @ 0.42%
⑯ SAN. 10" 100' 8" D.I. @ 0.42%	⑯ SAN. 10" 100' 8" D.I. @ 0.42%	⑯ SAN. 10" 100' 8" D.I. @ 0.42%	⑯ SAN. 10" 100' 8" D.I. @ 0.42%
⑰ SAN. 10" 100' 8" D.I. @ 0.42%	⑰ SAN. 10" 100' 8" D.I. @ 0.42%	⑰ SAN. 10" 100' 8" D.I. @ 0.42%	⑰ SAN. 10" 100' 8" D.I. @ 0.42%
⑱ SAN. 10" 100' 8" D.I. @ 0.42%	⑱ SAN. 10" 100' 8" D.I. @ 0.42%	⑱ SAN. 10" 100' 8" D.I. @ 0.42%	⑱ SAN. 10" 100' 8" D.I. @ 0.42%
⑲ SAN. 10" 100' 8" D.I. @ 0.42%	⑲ SAN. 10" 100' 8" D.I. @ 0.42%	⑲ SAN. 10" 100' 8" D.I. @ 0.42%	⑲ SAN. 10" 100' 8" D.I. @ 0.42%
⑳ SAN. 10" 100' 8" D.I. @ 0.42%	⑳ SAN. 10" 100' 8" D.I. @ 0.42%	⑳ SAN. 10" 100' 8" D.I. @ 0.42%	⑳ SAN. 10" 100' 8" D.I. @ 0.42%
㉑ SAN. 10" 100' 8" D.I. @ 0.42%	㉑ SAN. 10" 100' 8" D.I. @ 0.42%	㉑ SAN. 10" 100' 8" D.I. @ 0.42%	㉑ SAN. 10" 100' 8" D.I. @ 0.42%
㉒ SAN. 10" 100' 8" D.I. @ 0.42%	㉒ SAN. 10" 100' 8" D.I. @ 0.42%	㉒ SAN. 10" 100' 8" D.I. @ 0.42%	㉒ SAN. 10" 100' 8" D.I. @ 0.42%
㉓ SAN. 10" 100' 8" D.I. @ 0.42%	㉓ SAN. 10" 100' 8" D.I. @ 0.42%	㉓ SAN. 10" 100' 8" D.I. @ 0.42%	㉓ SAN. 10" 100' 8" D.I. @ 0.42%
㉔ SAN. 10" 100' 8" D.I. @ 0.42%	㉔ SAN. 10" 100' 8" D.I. @ 0.42%	㉔ SAN. 10" 100' 8" D.I. @ 0.42%	㉔ SAN. 10" 100' 8" D.I. @ 0.42%
㉕ SAN. 10" 100' 8" D.I. @ 0.42%	㉕ SAN. 10" 100' 8" D.I. @ 0.42%	㉕ SAN. 10" 100' 8" D.I. @ 0.42%	㉕ SAN. 10" 100' 8" D.I. @ 0.42%

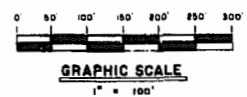


NOTE: ALL CONTOUR LINES ARE AT A 5 FOOT INTERVAL.

NOTE: THIS INDEX IS FOR REFERENCE ONLY, FOR CONSTRUCTION INFORMATION SEE SHEETS 1 THROUGH 6.

STREET NAME CHART

DESTINATION	RIGHT-OF-WAY	NAME
'A' STREET	50' R/W	WILLIAM WAY
'A' COURT	30' R/W	CHARLENE CLOSE
'B' COURT	30' R/W	CAPTAIN'S COURT
'C' COURT	30' R/W	HAMIE CLOSE
'D' COURT	30' R/W	PROJECTIES REYS
'E' COURT	30' R/W	ST. STROME COURT
'F' COURT	30' R/W	CORBIN CLOSE



REVISIONS

NO.	DATE	DESCRIPTION
1		
2		
3		
4		
5		
6		
7		
8		
9		
10		

1
 2
 3
 4
 5
 6
 7
 8
 9
 10
 11
 12
 13
 14
 15
 16
 17
 18
 19
 20
 21
 22
 23
 24
 25
 26
 27
 28
 29
 30
 31
 32
 33
 34
 35
 36
 37
 38
 39
 40
 41
 42
 43
 44
 45
 46
 47
 48
 49
 50
 51
 52
 53
 54
 55
 56
 57
 58
 59
 60
 61
 62
 63
 64
 65
 66
 67
 68
 69
 70
 71
 72
 73
 74
 75
 76
 77
 78
 79
 80
 81
 82
 83
 84
 85
 86
 87
 88
 89
 90
 91
 92
 93
 94
 95
 96
 97
 98
 99
 100