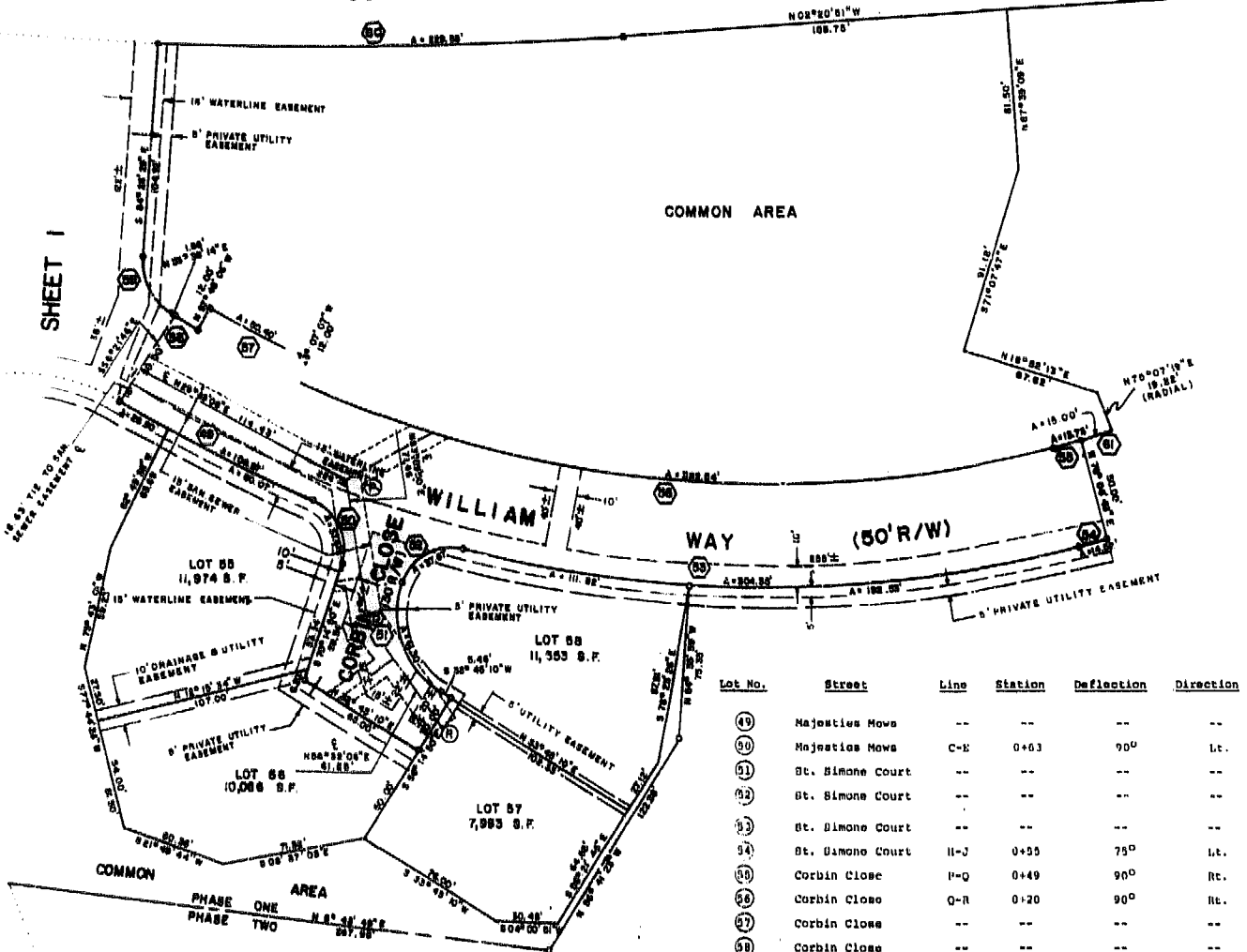


SOUTH HENRY STREET (VARIABLE R/W)



SHEET 1

COMMON AREA

Lot No.	Street	Line	Station	Deflection	Direction
49	Majestics Mews	--	--	--	--
50	Majestics Mews	C-E	0+63	90°	Lt.
51	St. Simone Court	--	--	--	--
52	St. Simone Court	--	--	--	--
53	St. Simone Court	--	--	--	--
54	St. Simone Court	H-J	0+55	75°	Lt.
55	Corbin Close	P-Q	0+49	90°	Rt.
56	Corbin Close	Q-R	0+20	90°	Rt.
57	Corbin Close	--	--	--	--
58	Corbin Close	--	--	--	--

**V.D.H. & T.**

CENTERLINE 10' EASEMENT OVER SERVICE CONNECTIONS

Lot No.	Street	Line	Station	Deflection	Direction
1	Chanteraime Close	L-M	0+00	90°	Rt.
2	Chanteraime Close	--	--	--	--
3	Chanteraime Close	--	--	--	--
4	Chanteraime Close	--	--	--	--
5	Chanteraime Close	L-M	1+20	90°	Lt.
6	Chanteraime Close	L-M	0+73	90°	Lt.
7	Captain's Court	F-G	1+14	90°	Rt.
8	Captain's Court	--	--	--	--
9	Captain's Court	--	--	--	--
10	Captain's Court	F-G	1+72	90°	Lt.
11	Captain's Court	F-G	1+10	90°	Lt.
12	Captain's Court	F-G	0+39	90°	Lt.
13	Hague Close	C-D	0+53	90°	Rt.
14	Hague Close	--	--	--	--
15	Hague Close	--	--	--	--
16	Hague Close	--	--	--	--
17	Hague Close	--	--	--	--
18	Hague Close	C-D	2+31	90°	Lt.
19	Hague Close	C-D	1+19	90°	Lt.
20	Hague Close	C-D	0+45	90°	Lt.
21	William Way	B-A	0+55	90°	Rt.
45	William Way	B-A	0+55	87°	Lt.
46	William Way	B-C	0+50	90°	Rt.
47	Majestics Mews	--	--	--	--
48	Majestics Mews	--	--	--	--

- NOTE**
- EASEMENTS ARE SUBJECT TO FIELD ADJUSTMENTS DURING CONSTRUCTION OF UTILITIES.
  - ALL STREETS SHOWN ON THE PLAN WITH THE EXCEPTION OF SOUTH HENRY STREET ARE TO BE PRIVATE, AND ARE NOT TO BE DEDICATED TO THE CITY.
  - OWNERS HEREBY GRANT TO THE CITY OF WILLIAMSBURG AN EASEMENT OF INGRESS AND EGRESS OVER ALL PRIVATE STREETS FOR THE PURPOSE OF UTILITY MAINTENANCE AND ACCESS BY CITY SERVICES, POLICE AND EMERGENCY VEHICLES AND PERSONNEL.
  - ALL EXTERIOR DECKS SHALL BE LOCATED NO CLOSER THAN 3' FROM ANY PROPERTY LINE OR 10' FROM ANY ADJACENT STRUCTURE.

\* PROJECT NO.  
U000-137-101, PE-101, RW-201  
C-501

See sheet 3 for building setbacks of individual lots.

VIRGINIA:  
IN THE CLERK'S OFFICE OF THE CIRCUIT COURT OF WILLIAMSBURG, VIRGINIA, ON THE 25th DAY OF June, 1988, THIS PLAN WAS RECEIVED AND ADMITTED TO RECORD IN MAP BOOK 42 AT PAGE 89.  
TESTE: *John S. Ward*, CLERK.

**T&A**  
**Talbot & Associates, Ltd.**  
Architects, Engineers, Planners, Surveyors, Landscape Architects  
100 Landmark Square, Virginia Beach, Va. 23452  
770 Thimble Shoals Blvd., Suite 201, Newport News, Va. 23606

DRAWN BY: K.L.B.	DATE: 8-20-88
DRAFT. CHK. W.D.M.	DATE: 8-20-88
COMP. CHK. J.W.L.	DATE: 8-20-88
ENR. CHK. _____	DATE: 8-20-88
DEPT. HEAD: W.D.M.	DATE: 8-20-88
PROJECT NO: 84919	
SCALE: 1" = 80'	
FILE NO: 84919	

**SUBDIVISION OF PORT ANNE**  
**PHASE ONE**  
**WILLIAMSBURG, VIRGINIA**  
SHEET 3 OF 8