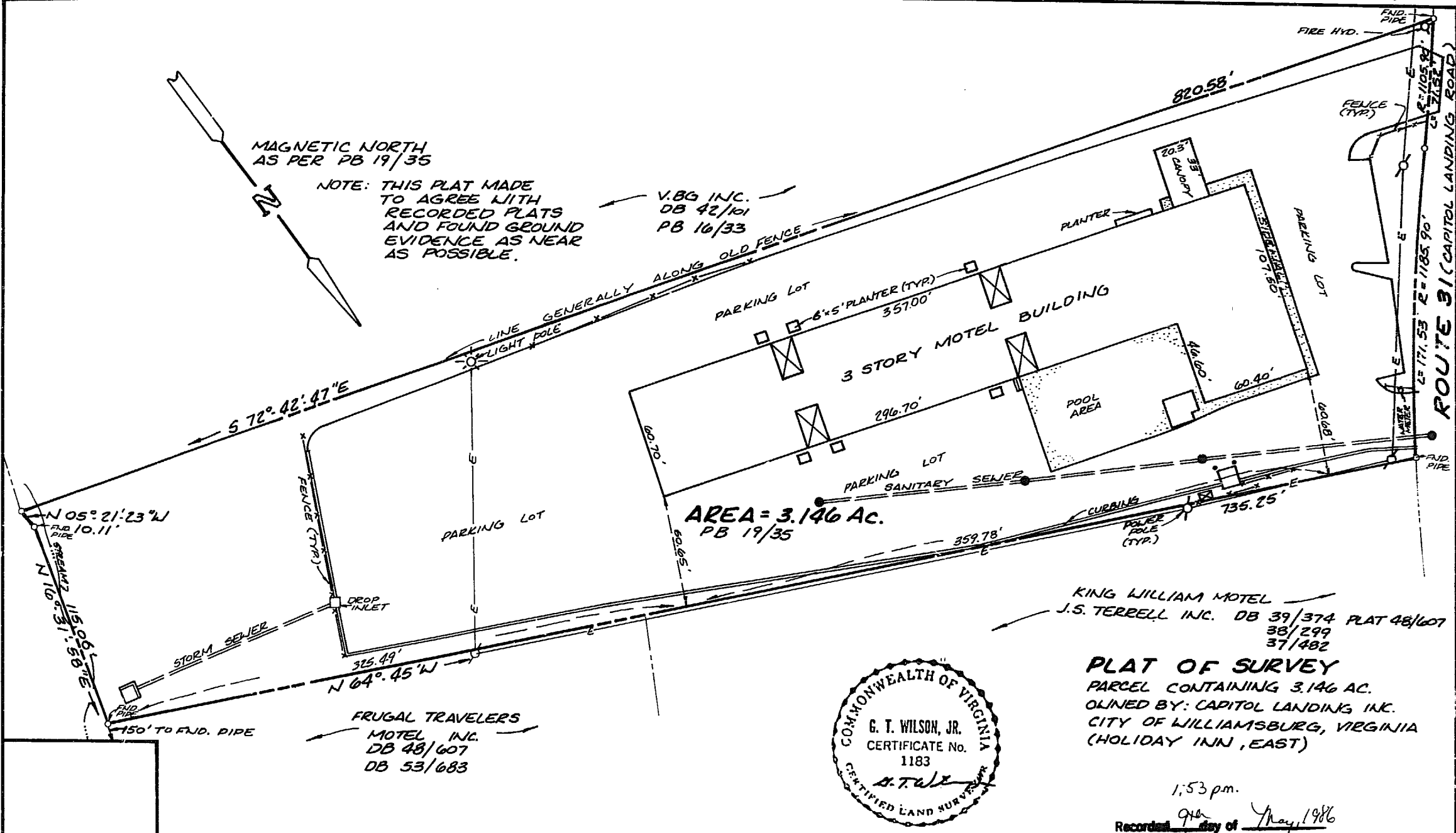


MAGNETIC NORTH
AS PER PB 19/35

NOTE: THIS PLAT MADE
TO AGREE WITH
RECORDED PLATS
AND FOUND GROUND
EVIDENCE AS NEAR
AS POSSIBLE.

V.B.G. INC.
DB 42/101
PB 16/33

ROUTE 31 (CAPITOL LANDING ROAD)



AREA = 3.146 Ac.
PB 19/35

KING WILLIAM MOTEL
J.S. TERRELL INC. DB 39/374 PLAT 48/607
38/299
37/482

FRUGAL TRAVELERS
MOTEL INC.
DB 48/607
DB 53/683



PLAT OF SURVEY
PARCEL CONTAINING 3.146 AC.
OWNED BY: CAPITOL LANDING INC.
CITY OF WILLIAMSBURG, VIRGINIA
(HOLIDAY INN, EAST)

1:53 p.m.

Recorded 9th day of May, 1986

REVISIONS					DESCRIPTION
	NO.	SYMBL.	BY	DATE	

SCALE 1"=50'
DATE 5/2/86
ENG. [Signature]

BUCHART-HORN, INC.
Consulting Engineers & Planners
YORK, PA. HARRISBURG, PA. WASHINGTON, D.C. LEWISBURG, PA.
BALTIMORE, MD. MEMPHIS, TENN. VERO BEACH, FLA. NEW ORLEANS, LA.
WILLIAMSBURG, VA. CHARLESTON, W. VA.

D. B. No. 74; page 536
Hester Swart Clerk

JOB NO.
90176-1A
C.L. INC.
1061

